

TRACT NO.	ACRES	OWNER
1	10.12	ST. JOHN'S UNIT 1
2	10.12	ST. JOHN'S UNIT 2
3	10.12	ST. JOHN'S UNIT 3
4	10.12	ST. JOHN'S UNIT 4
5	10.12	ST. JOHN'S UNIT 5
6	10.12	ST. JOHN'S UNIT 6
7	10.12	ST. JOHN'S UNIT 7
8	10.12	ST. JOHN'S UNIT 8
9	10.12	ST. JOHN'S UNIT 9
10	10.12	ST. JOHN'S UNIT 10
11	10.12	ST. JOHN'S UNIT 11
12	10.12	ST. JOHN'S UNIT 12
13	10.12	ST. JOHN'S UNIT 13
14	10.12	ST. JOHN'S UNIT 14
15	10.12	ST. JOHN'S UNIT 15
16	10.12	ST. JOHN'S UNIT 16
17	10.12	ST. JOHN'S UNIT 17
18	10.12	ST. JOHN'S UNIT 18
19	10.12	ST. JOHN'S UNIT 19
20	10.12	ST. JOHN'S UNIT 20
21	10.12	ST. JOHN'S UNIT 21
22	10.12	ST. JOHN'S UNIT 22
23	10.12	ST. JOHN'S UNIT 23
24	10.12	ST. JOHN'S UNIT 24
25	10.12	ST. JOHN'S UNIT 25
26	10.12	ST. JOHN'S UNIT 26
27	10.12	ST. JOHN'S UNIT 27
28	10.12	ST. JOHN'S UNIT 28
29	10.12	ST. JOHN'S UNIT 29
30	10.12	ST. JOHN'S UNIT 30
31	10.12	ST. JOHN'S UNIT 31
32	10.12	ST. JOHN'S UNIT 32
33	10.12	ST. JOHN'S UNIT 33
34	10.12	ST. JOHN'S UNIT 34
35	10.12	ST. JOHN'S UNIT 35
36	10.12	ST. JOHN'S UNIT 36
37	10.12	ST. JOHN'S UNIT 37
38	10.12	ST. JOHN'S UNIT 38
39	10.12	ST. JOHN'S UNIT 39
40	10.12	ST. JOHN'S UNIT 40
41	10.12	ST. JOHN'S UNIT 41
42	10.12	ST. JOHN'S UNIT 42
43	10.12	ST. JOHN'S UNIT 43
44	10.12	ST. JOHN'S UNIT 44
45	10.12	ST. JOHN'S UNIT 45
46	10.12	ST. JOHN'S UNIT 46
47	10.12	ST. JOHN'S UNIT 47
48	10.12	ST. JOHN'S UNIT 48
49	10.12	ST. JOHN'S UNIT 49
50	10.12	ST. JOHN'S UNIT 50
51	10.12	ST. JOHN'S UNIT 51
52	10.12	ST. JOHN'S UNIT 52
53	10.12	ST. JOHN'S UNIT 53
54	10.12	ST. JOHN'S UNIT 54
55	10.12	ST. JOHN'S UNIT 55
56	10.12	ST. JOHN'S UNIT 56
57	10.12	ST. JOHN'S UNIT 57
58	10.12	ST. JOHN'S UNIT 58
59	10.12	ST. JOHN'S UNIT 59
60	10.12	ST. JOHN'S UNIT 60
61	10.12	ST. JOHN'S UNIT 61
62	10.12	ST. JOHN'S UNIT 62
63	10.12	ST. JOHN'S UNIT 63
64	10.12	ST. JOHN'S UNIT 64
65	10.12	ST. JOHN'S UNIT 65
66	10.12	ST. JOHN'S UNIT 66
67	10.12	ST. JOHN'S UNIT 67
68	10.12	ST. JOHN'S UNIT 68
69	10.12	ST. JOHN'S UNIT 69
70	10.12	ST. JOHN'S UNIT 70
71	10.12	ST. JOHN'S UNIT 71
72	10.12	ST. JOHN'S UNIT 72
73	10.12	ST. JOHN'S UNIT 73
74	10.12	ST. JOHN'S UNIT 74
75	10.12	ST. JOHN'S UNIT 75
76	10.12	ST. JOHN'S UNIT 76
77	10.12	ST. JOHN'S UNIT 77
78	10.12	ST. JOHN'S UNIT 78
79	10.12	ST. JOHN'S UNIT 79
80	10.12	ST. JOHN'S UNIT 80
81	10.12	ST. JOHN'S UNIT 81
82	10.12	ST. JOHN'S UNIT 82
83	10.12	ST. JOHN'S UNIT 83
84	10.12	ST. JOHN'S UNIT 84
85	10.12	ST. JOHN'S UNIT 85
86	10.12	ST. JOHN'S UNIT 86
87	10.12	ST. JOHN'S UNIT 87
88	10.12	ST. JOHN'S UNIT 88
89	10.12	ST. JOHN'S UNIT 89
90	10.12	ST. JOHN'S UNIT 90
91	10.12	ST. JOHN'S UNIT 91
92	10.12	ST. JOHN'S UNIT 92
93	10.12	ST. JOHN'S UNIT 93
94	10.12	ST. JOHN'S UNIT 94
95	10.12	ST. JOHN'S UNIT 95
96	10.12	ST. JOHN'S UNIT 96
97	10.12	ST. JOHN'S UNIT 97
98	10.12	ST. JOHN'S UNIT 98
99	10.12	ST. JOHN'S UNIT 99
100	10.12	ST. JOHN'S UNIT 100

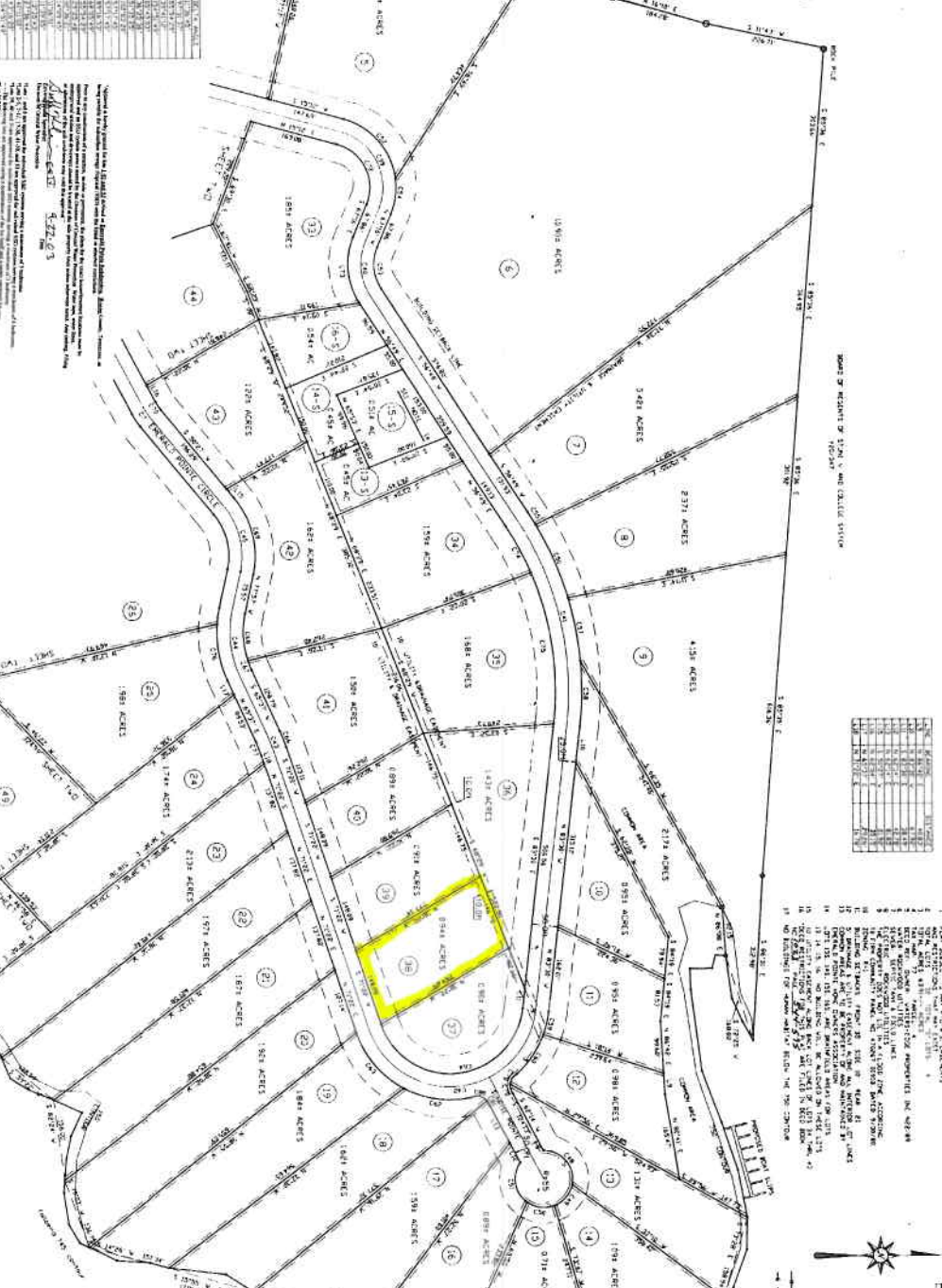
**STATE OF TENNESSEE**  
**PLANNING COMMISSION**  
 STATE CAPITAL BUILDING  
 NASHVILLE, TENNESSEE 37203-0001  
 PHONE: 615-253-4800  
 FAX: 615-253-4801  
 WWW.PLANCOM.TN.GOV



APPROVED FOR THE PLANNING COMMISSION BY:  
*[Signature]*  
 DATE: 5/22/03

APPROVED FOR THE PLANNING COMMISSION BY:  
 DATE: 5/22/03

NO.	DATE	DESCRIPTION
1	08/08/01	PREPARED BY: JENNIFER D. GIBSON
2	08/08/01	REVISIONS: NONE
3	08/08/01	REVISIONS: NONE
4	08/08/01	REVISIONS: NONE
5	08/08/01	REVISIONS: NONE
6	08/08/01	REVISIONS: NONE
7	08/08/01	REVISIONS: NONE
8	08/08/01	REVISIONS: NONE
9	08/08/01	REVISIONS: NONE
10	08/08/01	REVISIONS: NONE



NO.	DATE	DESCRIPTION
1		
2		
3		
4		
5		
6		
7		
8		
9		
10		
11		
12		
13		
14		
15		
16		
17		
18		
19		
20		
21		
22		
23		
24		
25		
26		
27		
28		
29		
30		
31		
32		
33		
34		
35		
36		
37		
38		
39		
40		
41		
42		
43		
44		
45		
46		
47		
48		
49		
50		

**LEGEND**

- LOT
- DRIVEWAY
- SIDEWALK
- UTILITY
- FENCE

SCALE: 1" = 100'

DATE: 5/22/03

PROJECT NO: 0200001

CATSKILL LAKE

STANDARD, 11x17 IN.  
 03084236  
 DATE: 5/22/03  
 PROJECT NO: 0200001