

Location Map

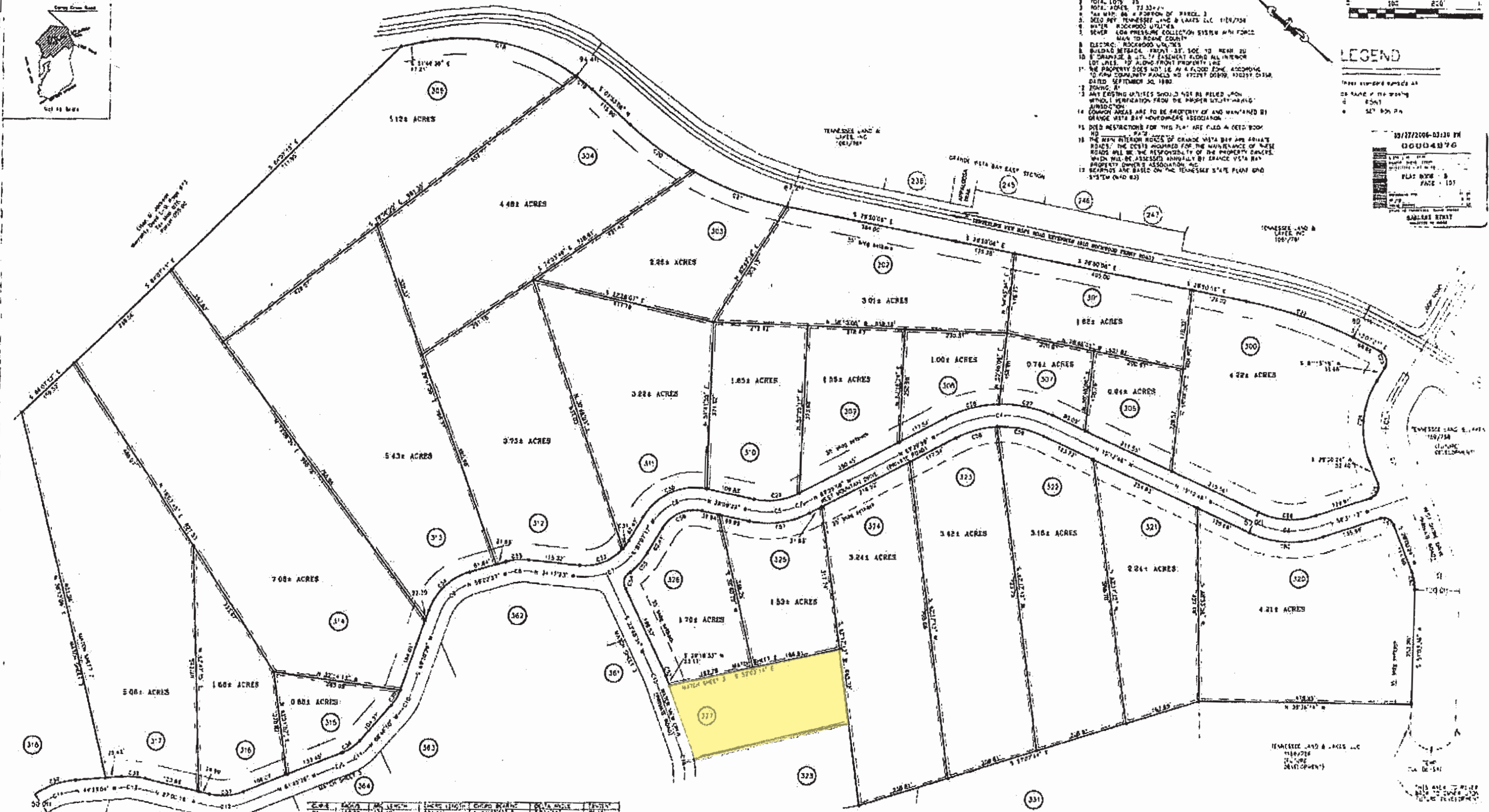


LEGEND

- 1. THIS MAP IS SUBJECT TO ANY AND ALL EASEMENTS AND RESTRICTIONS THAT MAY EXIST.
- 2. TOTAL LOTS 25.
- 3. TOTAL ACRES 72,337.41.
- 4. THIS MAP IS A PORTION OF PARCEL 3.
- 5. DEED BY TENNESSEE LAND & LAKES, INC. 11/19/75.
- 6. WATER ROCKWOOD UTILITIES.
- 7. SEWER LOW PRESSURE COLLECTION SYSTEM WITH FORCE MAIN TO ROANE COUNTY.
- 8. ELECTRIC ROCKWOOD UTILITIES.
- 9. BOUNDARY SURVEY FROM 1975 TO 1978.
- 10. 8' CRANKLE & 12' TO 14' EASEMENT AROUND ALL INTERIOR LOT LINES TO ALLOW FRONT PROPERTY LINE.
- 11. THE PROPERTY DOES NOT LIE IN A FLOOD ZONE ACCORDING TO FEMA COMMUNITY FLOOD INSURANCE PROGRAM, DATED SEPTEMBER 30, 1980.
- 12. ZONING: R-1.
- 13. ANY EXISTING UTILITIES SHOULD NOT BE RELOCATED WITHOUT PERMIT FROM THE APPROPRIATE AGENCY.
- 14. COMMON AREAS ARE TO BE PROPERTY OF AND MAINTAINED BY GRANDE VISTA BAY HOMEOWNERS ASSOCIATION.
- 15. DEED RESTRICTIONS FOR THIS PLAN ARE FILED A CERT BOOK NO. 127.
- 16. THE NEW INTERIOR BOUNDARIES OF GRANDE VISTA BAY ARE PRIVATE ROADS; THE COSTS INCURRED FOR THE MAINTENANCE OF THESE ROADS WILL BE THE RESPONSIBILITY OF THE PROPERTY OWNERS, WHICH WILL BE ASSESSED ANNUALLY BY GRANDE VISTA BAY PROPERTY OWNERS ASSOCIATION, INC.
- 17. RECORDS ARE BASED ON THE TENNESSEE STATE PLANT AND SYSTEM (24-0-83).

03/27/2006-03/10/06
00004876

DATE: 03/27/06
TIME: 10:00 AM
DRAWN BY: JMM
CHECKED BY: JMM
SCALE: AS SHOWN
SHEET NO. 1 OF 6



LOT NO.	ACRES	AREA	PERCENT	PERMITS	REMARKS
237	0.081	5,540	0.0076		
238	0.081	5,540	0.0076		
239	0.081	5,540	0.0076		
240	0.081	5,540	0.0076		
241	0.081	5,540	0.0076		
242	0.081	5,540	0.0076		
243	0.081	5,540	0.0076		
244	0.081	5,540	0.0076		
245	0.081	5,540	0.0076		
246	0.081	5,540	0.0076		
247	0.081	5,540	0.0076		
248	0.081	5,540	0.0076		
249	0.081	5,540	0.0076		
250	0.081	5,540	0.0076		
251	0.081	5,540	0.0076		
252	0.081	5,540	0.0076		
253	0.081	5,540	0.0076		
254	0.081	5,540	0.0076		
255	0.081	5,540	0.0076		
256	0.081	5,540	0.0076		
257	0.081	5,540	0.0076		
258	0.081	5,540	0.0076		
259	0.081	5,540	0.0076		
260	0.081	5,540	0.0076		
261	0.081	5,540	0.0076		
262	0.081	5,540	0.0076		
263	0.081	5,540	0.0076		
264	0.081	5,540	0.0076		
265	0.081	5,540	0.0076		
266	0.081	5,540	0.0076		
267	0.081	5,540	0.0076		
268	0.081	5,540	0.0076		
269	0.081	5,540	0.0076		
270	0.081	5,540	0.0076		
271	0.081	5,540	0.0076		
272	0.081	5,540	0.0076		
273	0.081	5,540	0.0076		
274	0.081	5,540	0.0076		
275	0.081	5,540	0.0076		
276	0.081	5,540	0.0076		
277	0.081	5,540	0.0076		
278	0.081	5,540	0.0076		
279	0.081	5,540	0.0076		
280	0.081	5,540	0.0076		
281	0.081	5,540	0.0076		
282	0.081	5,540	0.0076		
283	0.081	5,540	0.0076		
284	0.081	5,540	0.0076		
285	0.081	5,540	0.0076		
286	0.081	5,540	0.0076		
287	0.081	5,540	0.0076		
288	0.081	5,540	0.0076		
289	0.081	5,540	0.0076		
290	0.081	5,540	0.0076		
291	0.081	5,540	0.0076		
292	0.081	5,540	0.0076		
293	0.081	5,540	0.0076		
294	0.081	5,540	0.0076		
295	0.081	5,540	0.0076		
296	0.081	5,540	0.0076		
297	0.081	5,540	0.0076		
298	0.081	5,540	0.0076		
299	0.081	5,540	0.0076		
300	0.081	5,540	0.0076		
301	0.081	5,540	0.0076		
302	0.081	5,540	0.0076		
303	0.081	5,540	0.0076		
304	0.081	5,540	0.0076		
305	0.081	5,540	0.0076		
306	0.081	5,540	0.0076		
307	0.081	5,540	0.0076		
308	0.081	5,540	0.0076		
309	0.081	5,540	0.0076		
310	0.081	5,540	0.0076		
311	0.081	5,540	0.0076		
312	0.081	5,540	0.0076		
313	0.081	5,540	0.0076		
314	0.081	5,540	0.0076		
315	0.081	5,540	0.0076		
316	0.081	5,540	0.0076		
317	0.081	5,540	0.0076		
318	0.081	5,540	0.0076		
319	0.081	5,540	0.0076		
320	0.081	5,540	0.0076		
321	0.081	5,540	0.0076		
322	0.081	5,540	0.0076		
323	0.081	5,540	0.0076		
324	0.081	5,540	0.0076		
325	0.081	5,540	0.0076		
326	0.081	5,540	0.0076		
327	0.081	5,540	0.0076		
328	0.081	5,540	0.0076		
329	0.081	5,540	0.0076		
330	0.081	5,540	0.0076		
331	0.081	5,540	0.0076		
332	0.081	5,540	0.0076		
333	0.081	5,540	0.0076		
334	0.081	5,540	0.0076		
335	0.081	5,540	0.0076		
336	0.081	5,540	0.0076		
337	0.081	5,540	0.0076		

PREPARED FOR: TENNESSEE LAND & LAKES, L.C.
WATERS EDGE PROPERTIES CORPORATION
14120 BIRCHMOUNT PIKE
MEMPHIS, TN
PHONE: (901) 814-8500

PREPARED BY: WILSON SURVEYING CO. P.C.
P.O. BOX 808
MEMPHIS, TN 38102
PHONE: (901) 311-3014

RECORD PLAN OF "GRANDE VISTA BAY WEST" SECTION
FIFTH CIVIL DISTRICT - ROANE COUNTY, TN

DRAWN	DATE	WORKSHEET DRAWING TO:
JMM	02/18/06	1:5 ACRES
APPROVED	DATE	SECTION IN BOOK
WDM	02/18/06	141 4231 274-424
SCALE	SHEET	PROJECT NO.
1" = 100'	2 OF 6	0021008

CERTIFICATE OF ACCURACY
I HEREBY CERTIFY THAT I HAVE SUPERVISED THE PREPARATION OF THIS SURVEY AND THAT IN MY PROFESSIONAL OPINION THE SURVEY IS TRUE AND CORRECT TO THE BEST OF MY KNOWLEDGE AND BELIEF. THIS IS A CAUTIONARY STATEMENT AND THE BASIS OF PROVISION OF THE UNLAWFUL STATE IS 17800 AS BOUND MEASUREMENT.

WILLIAM D. MURPHY
REGISTERED LAND SURVEYOR
MEMPHIS, TENNESSEE

W.D. Murphy
W.D. Murphy
W.D. Murphy