

TRACT NO. (27)
PILOT OIL CORPORATION

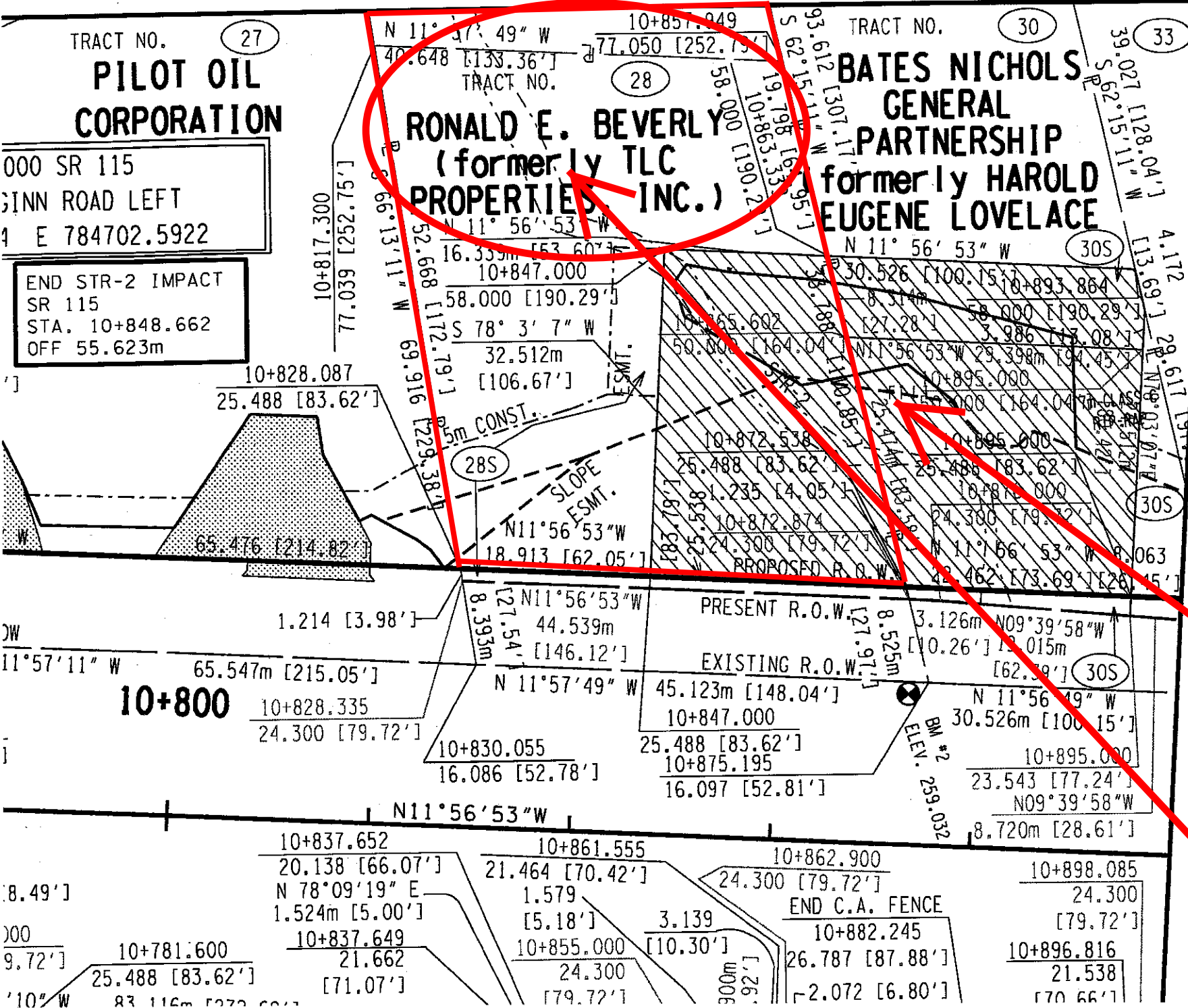
000 SR 115
 GINN ROAD LEFT
 E 784702.5922

END STR-2 IMPACT
 SR 115
 STA. 10+848.662
 OFF 55.623m

TRACT NO. (28)
**RONALD E. BEVERLY
 (formerly TLC PROPERTIES INC.)**

TRACT NO. (30)
**BATES NICHOLS
 GENERAL PARTNERSHIP
 formerly HAROLD
 EUGENE LOVELACE**

TRACT NO. (33)



TYPE	YEAR	PROJECT NO.	SHEET NO.
ROW	2000	47026-2268-04	6R

REV. 22-AUG.-2014: ADDED SHEET FOR CLARITY.
 REV. 7-NOV.-2014: ADDED PREVIOUS SLOPE EASEMENT. ADDED TRACTS 15S, 18SS, 20S, 21S, 22S, 26S, 28S, 30S AND 31S. REVISED R.O.W. AND EASEMENTS TRACT NO.27.
 REV. 16-JAN.-2015: TRACT 28S ADDED DRAINAGE EASEMENT, REVISED SLOPE AND CONSTRUCTION EASEMENT. REVISED EXISTING STREAM LOCATION.
 REV. 24-APR-2015: REMOVED CONST. EASEMENT FOR REMOVAL OF STRUCTURES TRACT 27. TRACT 21S, REVISED CONST. EASEMENT TO MISS SIGN.
 REV. 17-SEP-2015: DELINEATED CONSTRUCTION EASEMENT TRACT 28S.
 REV. 25-NOV-2015: TRACT 31S REVISED CONST. EASEMENT TO MISS CARPORT.

CANNOT BUILD

ESTIMATED BUILDABLE AREA (approx. 0.5 acres)