



Furrow Auction Company

1022 Elm Street, Knoxville, TN 37921
Phone 865.546.3206 • Fax 865.525.4179
www.furrow.com

IND-Power Sports, Vehicle and Warehouse Liquidation 4/25/2015

GENERAL TERMS AND CONDITIONS OF SALE - SATURDAY APRIL, 25, 2015

ORDER OF SALE:

ITEMS WILL BE SOLD IN NUMERICAL ORDER. It will be at the discretion of the Auctioneer to sell items out of sequence, divide or consolidate lots.

REGISTRATION:

By registering as a Bidder and/or participating as a Bidder at the auction sale Bidder is bound by the Terms & Conditions set forth herein and announced on the day of sale. Bidder agrees that such Terms & Conditions are binding on the Bidder whether or not the Bidder was present and/or heard such announcements. Bidder agrees that Auctioneer is in control of the conduct of the auction sale and has the right to reject any bid by any Bidder at the auction sale. It is at the sole discretion of the Auctioneer as to whether or not any bid is in conformity with the Terms & Conditions of the auction sale. Furthermore, Auctioneer may refuse to accept a bid whenever, in his sole discretion bid is not in good faith or Bidder appears to be under the influence or have some incapacity at time of sale. ALL PERSONS must be registered to bid and will be identified by number to facilitate the speed of the auction.

TIE -BIDS

Auctioneer will rule in case of "TIE" Bids. In the event of a TIE BID or any uncertainty as to offered last and highest bid the Auctioneer has a right to resolve any such at the time by accepting the Bid that the Auctioneer believes is in good faith and was the last, highest and best bid. Auctioneer may open the bidding between the parties at his discretion and option and such decision will be final and binding on affected parties.

SALES TAX:

Sales tax will be collected if applicable. Dealers can present Resale Certificates.

REMOVAL:

Auctioneer and Seller assume no responsibility for items left on sale site at sale's conclusion. Buyer is URGED to REMOVE ITEMS as soon as possible or to self insure for potential loss. Removal will be until 5:00 pm today or 1-hour following the sale, whichever is later. Additional Removal: Monday April 27th and Tuesday April 28th. AFTER WHICH WILL BE CONSIDERED ABANDONED BY BUYER AND DISPOSED OF.

NOTICE TO INSPECT "AS_IS WHERE IS":

Auctioneer presents all information in brochures, catalogs, and other advertisements from sources believed to be accurate. These are representations of the Auctioneer. Prospective Buyers should inspect all items to their own satisfaction. "BUYER BEWARE" Items are available for public inspection and the foregoing are merely guides. ALL ITEMS are being sold AS IS-WHERE-IS with no warranty or guarantee-actual or implied.

TERMS:

A 12% Buyer's Premium will be collected, an additional 3% Buyer's Premium for Online Bidders. Payment must be made in full day of sale by CASH, WIRE TRANSFER, CASHIER'S CHECK or COMPANY CHECK if Accompanied by BANK LETTER of GUARANTY, CREDIT CARDS to include: MASTERCARD or VISA ONLY. After an item has been sold, it becomes the sole responsibility of the

IND-Power Sports, Vehicle and Warehouse Liquidation 4/25/2015

Purchaser. No items can be removed until complete settlement has been made. Settlement can be made at any time during the sale. Settlement must be made today and an invoice with the paid item receipt will be supplied to the Purchaser upon settlement. The PAID receipt ticket will be required in order to remove items from the site. All checks should be made payable to Furrow Auction Company.

"ALL SALES ARE FINAL"

ONLINE BIDDING TERMS:

Online Bidders should review the "Online Terms & Conditions" in detail and will be held to those terms.

SAFETY DEVICES:

Items purchased may not incorporate approved activating mechanisms, operating safety devices or safety guards as required by law. It is Purchaser's responsibility that items purchased be so equipped and safeguarded to OSHA and any other requirement before placing items into operation.

All Riggers, Contractors or Buyer's conducting specialized removal must provide a "Certificate of Insurance" with a minimum \$1 million total liability and naming Furrow Auction Company and Seller as "LOSS PAYEE". Qualified and Insured Riggers must perform removal of items that may affect the Real Property. Damage responsibility will be the responsibility of the Riggers and Buyers of item removed.

Rigging and Removal is the responsibility of the Buyer. All removal activity must be in accordance with OSHA Guidelines and Standards. Removal may begin when auction has concluded and complete payment has been made.

OUR STAFF

SAM FURROW - OWNER/AUCTIONEER

BLAKE WILSON - VP INDUSTRIAL DIVISION, AUCTIONEER

WIL WAUGH - AUCTIONEER/PROJECT MGR

YOU CAN REACH US AT OUR EMAIL ADDRESS:

FURROW@FURROW.COM

VISIT WWW.FURROW.COM TO VIEW ALL UPCOMING AUCTIONS. OUR FAX NUMBER IS 865 525-4179.

1 EDU Science Telescope



2 Skil 2" Belt Sander



3 Skil Circular Saw, Craftsman 3/8" 12 Volt Electric Drill



4 Milwaukee Grinder



IND-Power Sports, Vehicle and Warehouse Liquidation 4/25/2015

5 Craftsman Mdl 315.17431, 1 1/2HP Router



5A Circa 1950 MinnKota Trolling Motor



5B Trolling Motor

5C Lowrance Elite -4X Hybrid Dual Imaging Fishfinder (NEW in Box)



6 Exmark 21" Trivantage Self Propelled Mower



7 Exmark 21" Trivantage Self Propelled Mower



8 Exmark 21" Trivantage Self Propelled Mower



9 Ryan Lawn Aerator



10 Scag 52" Advantage Walk-behind Commercial Mower



IND-Power Sports, Vehicle and Warehouse Liquidation 4/25/2015

10A Scag 52" Advantage Walk-behind Commercial Mower



11 Honda Motocompo 50cc folding Scooter



12 Go-Cart 5HP, Briggs & Stratton Engine, 2-Seater



13 4' X 8' Tag-A-Long Trailer, (No Title Ever)



14 DZ Dazon 150cc Side By Side Go-Cart



15 1997 Bombardier SPX 800cc Sea Doo, W/Trailer



16 1996 Bombardier XP Sea Doo, W/Trailer



17 2004 Yamaha 1200 XLT Wave Runner, (Certificate)



17A 1980 Maiden Craft Procraft 16' Bass Boat Mercury 150 Outboard, W/Hummingbird LCR 4000 Fish Finder and MinnKota Trolling Motor, (Certificate)



IND-Power Sports, Vehicle and Warehouse Liquidation 4/25/2015

18 2004 Boston Whaler Boat, 110 Center Console, 11', W/Mercury 25HP Outboard, W/Trailer



19 2006 Walker Bay Genesis 12' Inflatable RIB Boat, Hyperline Tubing, W/Yamaha 9.9HP Outboard, (No Trailer)



20 Mercury 12' Inflatable Boat, W/Mercury 15HP Outboard Motor, (No Trailer)



21 Sea Eagle 10' Inflatable Boat, W/Nissan 2.5HP Outboard, (No Trailer)



21A 2012 Aluminum 14' John Boat W/Suzuki 6hp Four Stroke, (Certificate)



22 2003 Ford Thunderbird Convertible 3.9 Liter, V-8, 5sp Auto, Charcoal Exterior, W/Brown/Black Leather Interior, Soft & Hard Top, ODO 111,817, Vin 1FAHP60A93Y104928 (Title)
THIS ITEM ONLY 10% Buyers Premium



23 2002 Ford Thunderbird Convertible, 5sp Auto, Red Exterior, Red/Black Leather Interior, Soft & Hard Top, ODO 40,841, Vin 1FAHP60A62Y102424 (Title)
THIS ITEM ONLY 10% Buyers Premium



IND-Power Sports, Vehicle and Warehouse Liquidation 4/25/2015

24 27 Ford Mdl T Roadster 350 Engine, Turbo Transmission, Fiberglass Body, ODO 1662, (This items "Subject to Confirmation")



24A 2004 Ford F-350 XL Super Duty Flatbed 11' Bed, Diesel 6sp, ODO 130,205, Vin 1FDWF36P04ED07011 (Title)



24B 2002 Ford F-450 XLT Super Duty Crew Cab Flatbed, Diesel, Auto, ODO 113,235, Vin 1FDXW46F12ED40257 (Title)



25 Clark Mdl CDP55 Forklift, 11,000LB Diesel, Foam Filled Tires, W/Fork Positioner, 2,489Hrs,



26 Mitsubishi 25 Forklift 3,000LB LP Gas, Solid Tire, Low-Profile

27 Whiteman Multiquip Mortar Mixer, W/8HP Honda Engine, Towable



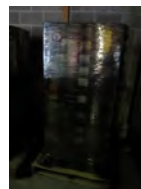
28 2-Door Metal Storage Cabinet



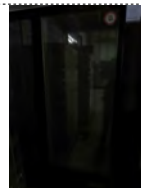
29 Vending Machine, Coin and Bill Type



30 Vending Machine, Coin and Bill Type



31 Beverage Air 2-Door Display Cooler



32 True Single Door Glass Display Cooler



33 Henny Penny Pressure Fryer



34 Vulcan Gas , 2-Basket Deep Fryer



35 Vulcan Gas , 2-Basket Deep Fryer



36 Gas 2-Basket Deep Fryer



37 Hobart 2-Basket Deep Fryer



38 Vulcan, 2-Basket Deep Fryer



39 Bakers & Chefs 8-Burner, LP Gas Char-Grill



40 Wells Drop-In Unit (1) Heated Side, (1) Refrigerated Side



41 Beverage Air Single-Door Under-counter Refrigerator



42 Under-counter 110 Volt Ice Maker



43 Krack Condensing Unit For Walk-In Cooler



44 Epco Proofing Cabinet



45 Cornelius 500 Series Commercial Ice Maker



46 SS 6' X 8' Vent Hood



47 Captiveaire Mdl NSAU1-G10 110 Volt Power Exhaust Fan



IND-Power Sports, Vehicle and Warehouse Liquidation 4/25/2015

48 (2) Roof Vents for Vent Hood



49 62" x 32" SS Single Door, 2-Drawer Deli Prep Unit



50 96" X 26" Beverage Air Reach-In Beer Cooler



51 6-Door SS Refrigerator (for parts)



52 4-Door Refrigerator, W/Cool bar drop-In, 98" X 27"



53 Popcorn Maker



54 Toastwell Mdl BG3-L Electric Flat-top Griddle



55 Otis Toaster Oven



56 Nemco 2-Light Heat Lamp



57 Eagle 78" X 30" 2-Compartment SS Sink



58 SS Radiant Patio Heater



59 SS Wall Mounted Cabinet, SS Cart, Partial SS Table



60 Vulcan Gas 4-Burner Range, W/Flat-top Griddle, SS Appliance Table



61 Eagle Single Compartment SS Sink



62 SS Hand Sink



63 Bunn Por-O-Matic Coffee Maker



64 Black & Decker Toaster Oven



65 Blakeslee Mdl GSE9 Meat Slicer



66 Folding 6' Table



67 Contents Rack, Cooking Utensils, Pots, Pans, etc



68 LP Gas Outdoor Fryer



69 Chopper Attachment for Mixer



70 Section Metro Shelving 24" X 72" X 72"



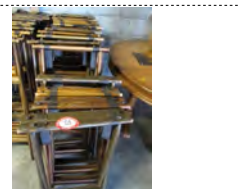
71 Wire Display Racking in Shelving



72 (12) Tray Carts



73 (16) Tray Carts



74 Sharp Mdl XE-A106 Electronic Cash Register



IND-Power Sports, Vehicle and Warehouse Liquidation 4/25/2015

75 46" X 30" Double Pedestal Table



76 (2) Wooden Single Pedestal 36" X 36" Tables



77 (2) Wooden Single Pedestal 30" X 30" Tables



78 (2) Wooden 3- Pedestal 60" Round Tables



79 (2) Metal Single Pedestal Wooden Top Table 54" Round



80 Metal Single Pedestal Wooden Top Table 54" Round



81 (2) Metal Single Pedestal Wooden Top Table 42" Round



82 (2) Metal Single Pedestal Wooden Top Table 42" Round



83 (2) Metal Single Pedestal Wooden Top Table 42" Round



IND-Power Sports, Vehicle and Warehouse Liquidation 4/25/2015

84 (2) Metal Single Pedestal Wooden Top Table 42" Round



85 (2) Metal Double Pedestal Wooden Top Table 36" X 72"



86 Metal Double Pedestal Wooden Top Table 36" X 60"



87 (2) Metal Double Pedestal Wooden Top Table 36" X 60"



88 (2) Metal Double Pedestal Wooden Top Table 36" X 60"



89 (2) Metal Single Pedestal Wooden Top Table 48" Round



90 (2) Metal Single Pedestal Wooden Top Table 48" Round



91 (3) Metal Single Pedestal Wooden Top Table 48" Round



92 (5) Various Size Tables



IND-Power Sports, Vehicle and Warehouse Liquidation 4/25/2015

93 Tempacure 48" Warehouse Fan



94 Weider Pro Weight Bench, Various Free Weights



95 (4) Fluorescent Light Fixtures, Bulbs, etc



95A 48' Dry Van Storage Trailer (No Title Ever)



95B Misc Trash Cans, Plastic Storage Bins, etc (on left side of trailer)



95C (2) Side Arm Chairs, Midback Task Arm Chair on caster, Hospital Bed (on right side of trailer)



96 Section Pallet Racking 144" X 144 X 40"



97 SS Duct Work for Vent Hoods



98 (2) Igloo Coolers



IND-Power Sports, Vehicle and Warehouse Liquidation 4/25/2015

99 (2) Igloo Coolers



100 (5) Small Igloo Coolers, Water Cooler



101 (5) 1-Gallons RV Anti-Freeze



102 (2) Jacks, (2) Receivers for hitches



103 Misc Light Fixtures, Light Blubs, Ceiling Fan, etc



104 Misc Floor Covers



105 (2) Sections Pallet Racking, (1) 144" X 144" X 40", (1) 72" X 40" X 144"



106 Wooden Display Rack



107 Glass Shelving, Misc Glass, Cut Glass, Brackets, etc



108 Train Mdl XE1000 1-Ton Split Heat/Air Unit



109 Fedders Heat Pump



110 (6) Sets Subway Style Booth Seating Package W/Tables and Booths

111 (2) Metal Wooden Top Double Pedestal Table, (1) 56" X 30", (1) 46" X 30"



112 (2) Metal Wooden Top Single Pedestal Table, 42" X 42"



113 (2) Metal Wooden Top Single Pedestal Table, 42" X 42"



114 (2) Metal Wooden Top Single Pedestal Table, 36" X 36"



115 Wooden End Table, 2-Drawer



116 Wooden Sofa Table, 4-Drawer



117 Decorative Wooden Wash Stand



118 Wooden Bench



119 Wooden Lectern



120 Decorative Wooden Hutch



121 Decorative Wooden Table, W/Hutch



122 (2) Metal Wooden Top Double Pedestal Table, 57" X 30"



123 (2) Metal Wooden Top Double Pedestal Table, 57" X 30"



124 (2) Metal Wooden Top Double Pedestal Table, 46" X 30"



125 (2) Metal Wooden Top Double Pedestal Table, 46" X 30"



126 Custom Built Pine Buffet W/Hutch



127 Custom Built Pine Buffet W/Hutch



128 Custom Built Pine Buffet W/Hutch



129 (8) Shafer Slat Back Wooden Side Chairs



130 (8) Shafer Slat Back Wooden Side Chairs



131 (8) Shafer Slat Back Wooden Side Chairs



132 (8) Shafer Slat Back Wooden Side Chairs



133 (8) Shafer Slat Back Wooden Side Chairs



134 (10) Shafer Slat Back Wooden Side Chairs



IND-Power Sports, Vehicle and Warehouse Liquidation 4/25/2015

135 (4) Wooden Side Chairs



136 (8) Shafer Slat Back Wooden Side Chairs (darker color)



137 (8) Shelby Williams Wooden Slap Back Side Chairs



138 (8) Plymold Slap Back Wooden Side Chairs



139 (10) Plymold Slap Back Wooden Side Chairs



140 (8) Wooden Framed Upholstered Bottom Side Chairs



141 (8) Wooden Framed Upholstered Bottom Side Chairs



142 (8) Wooden Framed Upholstered Bottom Side Chairs



143 (8) Wooden Framed Upholstered Bottom Side Chairs



IND-Power Sports, Vehicle and Warehouse Liquidation 4/25/2015

144 (8) Shelby Williams Wooden Bentwood Spindle Back Side Chairs



145 (9) Shelby Williams Wooden Bentwood Spindle Back Side Chairs



146 (8) Shelby Williams Wooden Slap Back Side Chairs



147 (8) Shelby Williams Wooden Slap Back Side Chairs



148 (8) Shelby Williams Wooden Slap Back Side Chairs



149 (8) Shelby Williams Wooden Slap Back Side Chairs



150 (8) Shelby Williams Wooden Slap Back Side Chairs



151 (8) Shelby Williams Wooden Slap Back Side Chairs



152 (8) Shelby Williams Wooden Slap Back Side Chairs



IND-Power Sports, Vehicle and Warehouse Liquidation 4/25/2015

153 (6) Shelby Williams Wooden Slap Back Side Chairs



154 (5) Sets 4-Seat Booth Seating Package, Wooden Framed Cushion Bottom and Back



155 (4) Sets 6-Seat Booth Seating Package, Wooden Framed Cushion Bottom and Back



156 Barrett EWP40 24 Volt 1500LB Electric Pallet Jack, W/Onboard Charger



157 5500LB Pallet Jack



158 5000LB Hydraulic Pallet Jack



159 EP 5000LB Hydraulic Pallet Jack



160 Delta 16" X 30" X 48" Jobox on casters



161 Jobox 16" X 30" X 34" on casters



IND-Power Sports, Vehicle and Warehouse Liquidation 4/25/2015

162 Wooden Cabinet, W/Metal Bins, Bolts, Nuts, Washers, Clips, Shelf Brackets, etc



163 Wooden Cart on casters, W/Contents, Shelf Brackets, Glass Shelves, Bolts, Nuts, etc



164 Custom Built Pallet Demolisher



165 2-Wheel Dolly



166 (2) 2-Wheel Dollies (pneumatic tire)



167 Contents Pallet, Jeep Front and Rear Differential



168 Contents Pallet, Jeep Front and Rear Differential, W/Axle, Hub, etc



169 4-Liter Jeep 6-Cylinder Engine



170 Set 6-Lug 22" Chrome Wheels, W/285/45 R 22's Mounted on Falken Tires, mounted on Wheels (Set of 4)



IND-Power Sports, Vehicle and Warehouse Liquidation 4/25/2015

171 10' Aluminum Step Ladder



172 20' Aluminum Extension Ladder



173 10' Fiberglass Step Ladder



174 8' Aluminum Step Ladder



175 6' Fiberglass Step Ladder



176 6' Fiberglass Step Ladder



177 Contents (2) Pallets, Various Metal Conduit, Metal Pipe, C Channel, etc



178 Contents Pallet, Bag of Self Leveling, Bags of Grout



179 Contents (3) Pallets, Various Size Tile



IND-Power Sports, Vehicle and Warehouse Liquidation 4/25/2015

180 Contents (2) Pallets, Casters, Trash Cans, Buckets, Screen, etc



181 Contents (3) Pallets, Various Type 6" X 6" Tile, 12" X 12" Tile, (5) Pieces 24" X 25" Marble



182 Contents Pallet, Misc Canister Lights, Wire, Flexible Conduit, Dropcords, etc



183 Contents Pallet, Misc Tile, 4" X 8", 6" X 6"



184 Contents (2) Pallets, 16" X 16", 12" X 12", Various Types Tile



185 Contents Pallet, 12" X 12" Vinyl Tile, 12" X 12" Porcelain Tile, 16" X 16" Porcelain



186 Contents (2) Pallets, 4" X 4", 2" X 2", 12" X 12" Various Types Tile



187 Contents (2) Pallet, Porcelain Tile 1" X 1", Bull Nose 3" X 13", 12" X 12" Tile



188 Contents Pallet, Approx 145, 12" X 12" X 1" Tiles



IND-Power Sports, Vehicle and Warehouse Liquidation 4/25/2015

189 (30) 16" X 16" Marble Tile



190 Contents of Pallets, Approx (40) Brick



191 Contents (2) Pallets, Various Size Porcelain Tile, 10" X 10" < 12" X 12", Wall Tile, etc



192 Contents Pallet, 16" X 16", 12" X 12", Porcelain Tile,



193 (24) 24" X 24" Marble Tiles



194 Contents Pallet, Various Types 12" X 12" Granite Tile



195 Contents Pallet, Various Type Marble Tile, 12" X 12"



196 Remington 150 Portable Forced Air Heater



197 Remington 150 Portable Forced Air Heater



IND-Power Sports, Vehicle and Warehouse Liquidation 4/25/2015

198 Master Portable Forced Air Heater



199 Remington 150 Portable Forced Air Heater



200 Remington 150 Portable Forced Air Heater



201 Kerosene Space Heater



201A Multiquip 140AMP, BC Welder/Generator, 3000 Watt

202 (2) Electric Motors, (1) 40hp, (1) 50hp



203 Target Wet Tile Saw



204 Wet Tile Saw

205 Mitre Saw



IND-Power Sports, Vehicle and Warehouse Liquidation 4/25/2015

206 Harrington 1/2-Ton Electric Chain Fall Hoist



207 Budget 1/4-Ton Electric Chain Fall Hoist



208 (2) Small 1-Ton Chain Fall Hoist



209 Economy Type 55 Electric Kilm



210 Craftsman 5hp 25-Gallon Air Compressor



211 (2) Front-Tine Tiller



212 Contents (2) Pallets, Misc Tile, 6" X 6", 8" X 4", etc



213 Haka Minuteman Floor Buffer



214 (11) Sections Pallet Racking, 96" X 40" X 144"



215 Tommy Lift, Lift Gate for Pick-up Truck



215A Contents Pallet, Various Size and Color Marble Tile



215B Contents (2) Pallets, Various Porcelain Tile, Slate Porcelain, etc



215C Aero Clean Air Filtration Units



215D Aero Clean Air Filtration Units



215E Aero Clean Air Filtration Units



215F Aero Clean Air Filtration Units



215G Aero Clean Air Filtration Units



215H SS Abateman Shower Glue and Filters



IND-Power Sports, Vehicle and Warehouse Liquidation 4/25/2015

216 (5) Sets 6' Scaffolding



217 (8) Sets 5' Scaffolding



218 (9) Scaffold Upright 48"



219 (5) Sets Scaffold Upright , W/Cross Braces



220 Contents Pallet, Scaffold Out-riggers



221 (2) 10' Cattle Gates



222 Contents Pallet (1) Life Jackets, Tow Ropes, Air Pumps, etc (for boats)



223 Misc Floats, weight Boards, etc (for water sports)



224 GE Stove, Kitchenaid Refrigerator, Dishwasher

225 (2) Electric Stove Tops, Oven Insert, (2) Dishwashers, SS Sink Basin, etc

226 (2) 48" X 24" 2-Wheel Dollies

227 (3) 48" X 24" 2-Wheel Dollies

228 (4) Small 2-Wheel Dollies

229 Antique US Postal Saddle, W/Blanket

230 Saddle, W/Blanket, Various Tack

231 Saddle, W/Blanket, Various Tack

232 Contents Pallet, Various Horse Tack, Saddle Bags, etc

233 Misc Horse Tack

234 (2) Porch Swings

235 (2) Porch Swings

236 (2) Vanity, Hutch Top, etc

237 Granite Coffee Table

238 Misc Christmas Decorations, Trees, Lights, etc

239 (4) Manual Punch Presses

240 72" X 30" Ice Cream Freezer, Reach-In Type

241 72" X 30" Ice Cream Freezer, Reach-In Type

242 72" X 30" Ice Cream Freezer, Reach-In Type

243 (7) Section Booth Seating Package, Cushion Bottom, Wooden Framed Back

244 Metal 2-Door Storage Cabinet, 4-Drawer Metal File Cabinet, (2) 2-Drawer Metal File Cabinets, (2) Small Metal Cabinets

245 (2) Wooden Outdoor Rockers

246 (3) Wooden Slat Bottom, Back Outdoor Side Arm Chairs

247 (2) Wooden Benches, (1) Metal Framed, Wooden Bottom, Back, (1) Wooden Glider Type Bench

248 Upholstered Wing-Back Chair, Wooden Entertainment Center

249 Oval Wooden 48" X 36" Table

250 Wooden Decorative Table, Console TV, W/Built-In VCR

IND-Power Sports, Vehicle and Warehouse Liquidation 4/25/2015

251 Pressed Wood Entertainment Center, W/Shelves

252 (5) Round Plastic 48" Tables

253 All-N-One Work-out Center

254 (5) Folding Chairs, (5) PVC Type Chairs

255 Wooden Double Pedestal Desk

256 (4) Speakers, Sony Portable Stereo

257 Wicker Type Chest

258 Craig Scanner, CB Radio, JVC Tape Player, CD Changer, Amplifier, etc

259 X-Box Console, (2) DVD Players

IND-Power Sports, Vehicle and Warehouse Liquidation 4/25/2015

260 Thomas AM/FM Radio, (2) Portable Radios, Rotary Telephone

261 (3) Reel to Reel Players, Albums, etc

262 Walnut Dining Table

263 Various Glassware, Plates, Bowls, Pitcher sets, Cream & Sugar

264 Wooden Single Pedestal Table, W/(4) Chairs

265 Contents Table, Misc Nails, Fasteners, Gutter guard, etc

266 Contents Table, Various Crockware, Pans, Book-End, Canister set, etc

267 Oval Wooden Dining Table, W/(4) Chairs

268 Various 48" Fluorescent Light Blubs

269 Contents Desk, Planners, Lamps, Misc Decorative Items

270 (2) Metal Double Pedestal Desk

271 Sunbeam LP Gas Grill

272 (3) Metal Stack Chairs, Wooden Side Chair

273 Portable Incinerator Toilet

274 Decorative Wrought Iron Lawn Edging

275 3-Wheel Heavy Duty Custom Built Material Handler
