

SUBJECT TO CONFIRMATION

Limited Edition Late Model Vehicles

Auction to be held at 3275 Newport Hwy, Sevierville TN

Bid Live or Online

Saturday, May 16 • 9:30 AM

Inspection: Friday, May 15 • 9:00 AM - 4:00 PM



**THESE ITEMS ONLY
SUBJECT TO CONFIRMATION
LIMITED EDITION LATE MODEL
COLLECTIBLE VEHICLES**

- 2006 Cadillac XLR-V Supercharged Convertible, "Loaded", 443 hp w/all the extras, odo 8604 miles
- 2007 Corvette Z06, odo 1400 miles, 427 cu inch V8, 505 hp, 6-speed transmission, "like new"

**Bid online at
www.proxibid/furrow**

Online bidding powered by:

proxibid™

**TERMS FOR
EQUIPMENT &
VEHICLES: 10%
Buyer's Premium
(12% for Online
Bidders) - Cash, wire
transfer, cashier's
check, company or
personal check when
accompanied by a
bank letter of guar-
anty. Payment is due
day of Auction.**

DIRECTIONS: From I-40 East of Knoxville take Exit 407/TN-66 toward Sevierville, Pigeon Forge, Gatlinburg proceed 8.4 miles and turn left at Dolly Parton Parkway/W. Main St/TN-35/TN-411/TN-66 and proceed towards Newport on the Newport Highway approximately 9.9 miles to sale site on right. Auction will be held in the building behind Great Rustic Furniture main showroom

ABSOLUTE AUCTION

To Be Sold To The Highest Bidder Without Minimum or Reservation

General Contractor Equipment Package & Vehicles

Auction to be held at 3275 Newport Hwy, Sevierville TN

Bid Live or Online

Saturday, May 16 • 9:30 AM

Inspection: Friday, May 15 • 9:00 AM - 4:00 PM



Pass It On...if you have friends who might be interested in this auction, we would appreciate your sharing this information with them.

Dated Material • Do Not Delay

ABSOLUTE AUCTION
To Be Sold To The Highest Bidder Without Minimum or Reservation
**General Contractor
Equipment Package &
Vehicles**
Auction to be held at 3275 Newport Hwy,
Sevierville, TN
Saturday, May 16 • 9:30 AM
Inspection: Friday, May 15 • 9 AM - 4 PM



www.furrow.com
TN Lic. #62 • EQ090516
(865) 546-3206 • 1-800-4FURROW
Knoxville, TN 37921
1022 Elm Street

**FURROW
AUCTION
COMPANY**



PRESORTED
STANDARD
U.S. POSTAGE
PAID
PERMIT NO. 658
KNOXVILLE, TN



FURROW AUCTION COMPANY

1022 Elm Street, Knoxville, TN 37921

865.546.3206 • 1.800.4FURROW • WWW.FURROW.COM • TN Lic. #62

ABSOLUTE AUCTION

To Be Sold To The Highest Bidder Without Minimum or Reservation

General Contractor Equipment Package & Vehicles

Auction is being held at 3275 Newport Hwy, Sevierville TN

Bid Live or Online

Saturday, May 16 • 9:30 AM

Inspection: Friday, May 15 • 9:00 AM - 4:00 PM

Bid Live or Online

BID LIVE OR ONLINE AT WWW.PROXIBID/FURROW

Online bidding powered by:

proxibid™



2006

LATE MODEL CHEVY TRUCKS WITH "LOW MILEAGE"

- 2007 Chevy Tahoe LTZ, "loaded", 20" alloy wheels, leather, DVD player, captains chairs and more...
- 2006 Chevy 2500 SWB Silverado, 4x4, Crew Cab Pick-up, Duramax V-8 Diesel, Allison Auto 6-speed transmission, air, w/trailer package, bed liner, power seats/locks, gooseneck hitch, tool box, approx odo 19,500
- 2006 Chevy 2500 SWB Silverado, 4x4, Crew Cab, Vortec 6000 V-8 engine, auto transmission, air, w/Utility Bed, aluminum wheels, am/fm/cd, odo 7500
- 2006 Chevy 2500 HD Silverado, 4x4 Crew Cab Pickup, Vortec 6000 V-8 engine, auto, air, aluminum wheels, cruise odo 26,000
- 2006 Chevy 2500 Cargo Van Ext "Express", V-8, auto, air, trailer package, cruise, tilt steer, odo 8400

FLATBED, DUMP, PICKUP TRUCKS & TRAILERS

- International 4700E w/DT 466 Flatbed Truck
- 1998 Chevy 2500 Pickup Truck
- 1994 Ford F 150 Utility Bed Truck
- 1971 Ford F 700 Single Axle Dump Truck
- 25' Gooseneck Trailer w/dual tandems, ramps, 5' beaver tail
- 16' Tag-a-long Equipment Trailer

TELESCOPIC BOOM FORKLIFTS, MINI-EXCAVATORS, SKID STEERS, TRENCHER & ATTACHMENTS

- (2) Gehl DL-10H Telescopic Forklifts, 10,000lb, 60', EROPS, Foam filled or Super Ho Tires, approx 3500 hrs each
- Gehl 553 Telescopic Forklift, 6000 lb, 23', 2513hrs.
- Attachments for forklifts include: manbasket, fork extensions & bucket
- Bobcat 442 Excavator w/Hydraulic Thumb, EROPS, steel tracks
- Kubota KX-61-2 Mini-Excavator w/rubber tracks, s/n 11493
- 2005 Bobcat T-190 Rubber Track Loader, w/GP Bucket, 3003 hrs.
- Bobcat S-185 Skid Steer Loader w/GP bucket, 3012hrs.
- Assorted Attachments for Bobcat to include: stump grinder, 6' broom, 6-way dozer blade, grapple bucket & Rockhound
- 1999 Case 460 Trencher/Plow/Backhoe s/n JAF0284855

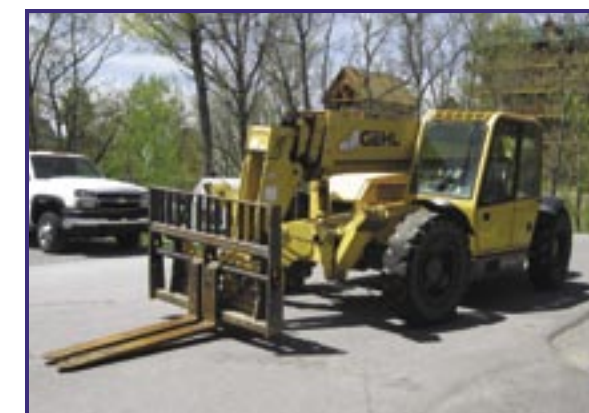


2006

GENERAL CONSTRUCTION EQUIPMENT & TOOLS

- Essick Concrete Pumper w/trailer
- Miller Trailblazer Welder/Generator w/trailer
- (28) Sets of 5' x 5' Scaffolding
- (3) Sets of 5' x 6' Scaffolding
- (1) Set of Interior Scaffolding
- Walkboards (4) 32', (10) 24', (2) 20', (6) 12', (1) 16', (1) 10', (16) Sections of Safety Rail
- Smith Air Compressor w/2 Pneumatic Hammers
- (5) Air Compressors, (1) DeWalt 8 Gallon Twin Tank w/ 5.5 Honda, (2) Duofast, (1) Titan 2273, (1) Advanced Auto
- (6) Generators, (3) Titans, Snapper, Troy Built, Power Boss from 1000watt to 8500watt
- (3) Pressure Washers, Titan, Generac, Campbell Hausfeld
- Chain Saws (1) Stihl Mdl TS 400, (2) Poulan 18"
- (2) 10" Table Saws, Ryobi, Black and Decker
- (3) DeWalt 14" Metal Cutting Chop Saws, Bosch 14" Chop Saw, (2) DeWalt 12" Chop Saws
- (5) Routers, (4) Porter Cable, (1) DeWalt
- (43) Pneumatic Nail Guns, Stanley, Hitachi, Paslode, Duofast, Framing, Roofing, Finish, Trim and Brad
- (3) Hitachi 15" Miter Saws, (4) Makita Circular Saws, (2) Jig Saws
- (11) Milwaukee, (1) DeWalt, (1) Bosch 1/2" Hammer Drills
- (2) Bosch Turbo Hammer Drills
- DeWalt DW530 Hammer Drill
- (2) Milwaukee Hole Haws
- Cordless Drills from Ryobi, DeWalt, Bosch and Porter Cable
- (5) Hilti 496 Powder Actuated Drivers
- (2) Job Boxes
- (29) Step Ladders from 4' to 12', (6) Extension Ladders, (4) 24', (2) 40', (9) Ladder Jacks
- (4) Laser Levels and Transits, Top Con, Berger, DeWalt and Mark Wizard
- Misc Hand Tools, Socket set, Hand Saws, Shovels, Rakes, and more.

THIS IS ONLY A PARTIAL EQUIPMENT LIST.



2007



2007

