

A NEW BUILDING FOR:

# SOUTHERN BUILT

KNOXVILLE

TENNESSEE

Mike Carpino - Mobile - 405-2170  
OWNER  
Fred Hagberg - Mobile - 455-6056  
PROJECT MGR.

## PLANS REVIEW DATA

### GOVERNING CODES & GUIDELINES:

2009 INTERNATIONAL BUILDING CODE (WITH LOCAL AMENDMENTS)  
2009 ANSIA 117  
2009 INTERNATIONAL ENERGY CODE  
2009 NATIONAL ELECTRICAL CODE (WITH LOCAL AMENDMENTS)  
2009 INTERNATIONAL FUEL GAS CODE (WITH LOCAL AMENDMENTS)  
2009 INTERNATIONAL MECHANICAL CODE (WITH LOCAL AMENDMENTS)  
2009 INTERNATIONAL PLUMBING CODE (WITH LOCAL AMENDMENTS)

### STATEMENT OF INTENT

GEORGE ARMOUR EWART, ARCHITECT HAS, TO THE BEST OF ITS PROFESSIONAL EFFORTS, DESIGNED AND PRODUCED THESE DRAWINGS TO COMPLY WITH ALL LOCAL, STATE, AND FEDERAL CODES APPLICABLE TO THIS PROJECT ON THE DAY OF ISSUANCE, WITHOUT BEING SUBJECT TO JUDICIAL INTERPRETATION AND TO BEST OF OUR KNOWLEDGE, THESE DRAWINGS ARE ALSO IN COMPLIANCE WITH THE AMERICANS WITH DISABILITIES ACT OF 1990 (ADA).

### OWNER

SOUTHERNBUILT

### PROJECT ADDRESS

KNOXVILLE, TN 37932

### OCCUPANCY CLASSIFICATION

STORAGE, S-2  
OCCUPANT LOAD = 5,000 G.S.F. / 300 = 17

### BUILDING CLASSIFICATION

TYPE II B UNPROTECTED  
UNSPRINKLERED

### COLUMNS

NC

### ROOF ASSEMBLY

NC

### EXTERIOR BEARING WALLS

NC

### BEAMS, GIRDERS, TRUSSES & ANCHORS

NC

### SQUARE FOOTAGE

5,000 G.S.F. ALLOWABLE 26,000 S.F.  
ACTUAL 5,000

## GENERAL NOTES

- CONTRACTOR SHALL VERIFY ALL ON SITE DIMENSIONS.
- DIMENSIONS ARE REFERENCE TO CENTERLINE OF NEW INTERIOR STUD WALLS, COL. CENTERLINES & TO THE FINISH FACE OF EXTERIOR WALLS UNLESS OTHERWISE INDICATED.
- PROVIDE PRESSURE TREATED WOOD FOR CONCEALED MEMBERS IN CONTACTED WITH MASONRY OR CONCRETE.
- PROVIDE WOOD BLOCKING IN WALLS FOR THE SUPPORT OF EQUIPMENT, RAILINGS, ACCESSORIES, DRAPERY TRACKS, RECESSED ITEMS, ETC. AS REQD. HANDRAILS, GRAB BARS AND WALL MOUNTED TOILET FIXTURES ARE TO BE INSTALLED TO WITHSTAND A MIN. VERT. OR HORIZ. FORCE OF 250 LBS.
- MAINTAIN THE INTEGRITY OF RATED WALLS AT ELECTRICAL PANELS, FIRE EXTINGUISHER CABINETS & ALL RECESSED EQUIPMENT.
- CONTRACTOR SHALL VERIFY AND COORDINATE ROUTING, PLACEMENT, SPACE & CLEARANCE REQUIREMENTS FOR MECHANICAL, ELECTRICAL & OTHER TRADES, REFERENCE PLUMBING, MECHANICAL & ELECTRICAL DRAWINGS.
- THE INTENT OF THESE DRAWINGS IS TO BE PART OF A "DESIGN BUILD" PROJECT ALTHOUGH THE ARCHITECT HAS ATTEMPTED TO SHOW ALL CONSTRUCTION. ARCHITECT AND CONTRACTOR ARE TO COORDINATE ANY AREAS NOT NOTED ON THESE DRAWINGS. ANY ADDITIONAL INFORMATION REQUIRED WILL BE PROVIDED DURING CONSTRUCTION.

## ABBREVIATIONS

ACT	ACOUSTICAL TILE
AFF	ABOVE FINISH FLOOR
ALT	ALTERNATE
ALUM	ALUMINUM
BLKG	BLOCKING
BLDG.	BUILDING
CAB	CABINET
CT	CERAMIC TILE
C/C	CENTER TO CENTER
CCT	CUBICLE CURTAIN TRACK
CIL OR CL	CENTER LINE
CG	CORNER GUARD
CLR	CLEAR
CMP	CORRUGATED METAL PIPE
CMU	CONCRETE BLOCK MASONRY UNIT
COL	COLUMN
CONC.	CONCRETE
CPT	CARPET
DBL	DOUBLE
DF	DRINKING FOUNTAIN
DFG	DOOR FRAME GUARD
DT	DRAPERY TRACK
EDG	EXISTING CORNER GUARD
ELEV.	ELEVATION
EP	ELECTRICAL PANEL
EWIC	ELECTRIC WATER COOLER
EXP. JT. OR EJ	EXPANSION JOINT
EXIST OR EX	EXISTING
FF	FINISH FLOOR
FCU	FAN COIL UNIT
FIN	FINISH
FOB	FACE OF BRICK
FOM	FACE OF MASONRY
FOS	FACE OF STUD
FIF	FACE TO FACE
FD	FLOOR DRAIN
FE	FIRE EXTINGUISHER
FEC	FIRE EXTINGUISHER CABINET
FHC	FIRE HOSE CABINET
GALV.	GALVANIZED
GB	GRAB BAR
GC OR GEN. CON	GENERAL CONTRACTOR
GFI	GROUND FAULT INTERRUPT
GP	GUARD POST
GYP. BD.	GYP. BOARD
HC	HANDICAP
HPDL	HIGH PRESSURE DECORATIVE LAMINATE
INSUL	INSULATION
INV.	INVERT (ELEVATION)
JT.	JOINT
MBL	MARBLE
MTL	METAL
N/A	NOT APPLICABLE
NC	NONE COMBUSTIBLE
NIC	NOT IN CONTRACT
NOM	NOMINAL
OC	ON CENTER
OH OR OPP HD	OPPOSITE HAND
OS/OS	OUTSIDE TO OUTSIDE
PL LAM	PLASTIC LAMINATE
PART	PARTIAL
PLAST	PLASTER
PT	PAINT
PTD	PAPER TOWEL DISPENSER
PTME	PATCH TO MATCH EXISTING
PTN	PARTITION
REF.	REFRIGERATOR
REV	REVISION
SD	SOAP DISPENSER
SQ. FT	SQUARE FEET
SQ. IN	SQUARE INCHES
SHV	SHEET VINYL
T&G	TONGUE AND GROOVE
TOS	TOP OF STEEL
TWL	TOWEL BAR
TKBD	TACK BOARD
TPH	TOILET PAPER HOLDER
V	VINYL
VCT	VINYL COMPOSITION TILE
WC	WALL COVERING OR WATER CLOSET
WD	WOOD
WG	WALL GUARD

## DRAFTING CONVENTIONS

	CONCRETE MASONRY (PLAN)
	CONCRETE MASONRY (SECT)
	BRICK
	CONCRETE
	PRE CAST CONCRETE
	STONE
	STEEL
	PARTICLE BOARD
	PLYWOOD OR COMPOSITE WOOD
	RIGID BOARD INSULATION
	BATT OR LOOSE INSULATION
	FINISH WOOD
	SOUND INSULATED PARTITION
	1 HOUR RATED PARTITION
	2 HOUR RATED PARTITION
	CENTERLINE COLUMN LINE
	SMOKE RESISTANT WALL

## GRAPHICS SYMBOLS

	ROOM DESIGNATION
	DOOR NO. DESIGNATION
	REVISION MARKER
	WINDOW DESIGNATION
	DETAIL OR SECTION NO.
	SHEET DRAWN ON (WHERE INDICATED)
	INTERIOR ELEVATION NO.
	SECTION NO.
	SHEET DRAWN ON
	EXTERIOR ELEVATION
	SHEET DRAWN ON
	ENLARGED AREA
	INTERIOR PARTITION TYPE

PROJECT NO.: 0793

DATE ISSUED: DECEMBER 2007

## INDEX TO DRAWINGS:

COVERSHEET	GENERAL NOTES & PLANS REVIEW DATA	
CIVIL	C1.1	SITE LAYOUT PLAN
	C1.2	SITE GRADING PLAN
	C2.1	SITE DETAILS - 1
	C2.2	SITE DETAILS - 2
ARCHITECTURAL	A0	ARCHITECTURAL SITE PLAN
	A1	FLOOR PLAN
	A2	SCHEDULES & DETAILS
	A3	EXTERIOR ELEVATIONS
	A4	WALL SECTIONS
	A5	MILLWORK & DETAILS
STRUCTURAL	S1	FOUNDATION PLAN
	S2	STRUCTURAL NOTES & DETAILS



GEORGE ARMOUR  
EWART

404 BEARDEN PARK CIRCLE  
KNOXVILLE, TN 37919  
Phone: 865.602.7771  
Fax: 865.602.7742  
Web: www.georgeewart.com



GROUND BREAKERS  
OFFICE

PROJECT NO.: 0793  
DATE: 21 DECEMBER 2007



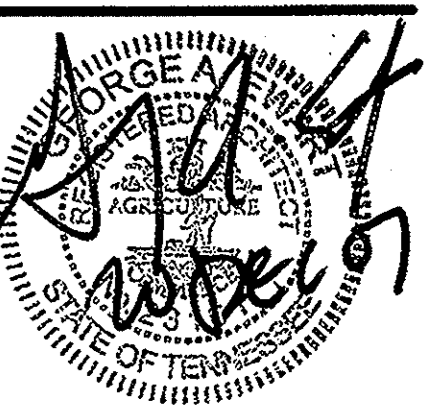




**GEORGE ARMOUR  
EWART**

404 Bearden Park Circle  
Knoxville, TN 37919  
Phone 865.602.7771  
Fax 865.602.7742  
Web: www.georgeewart.com

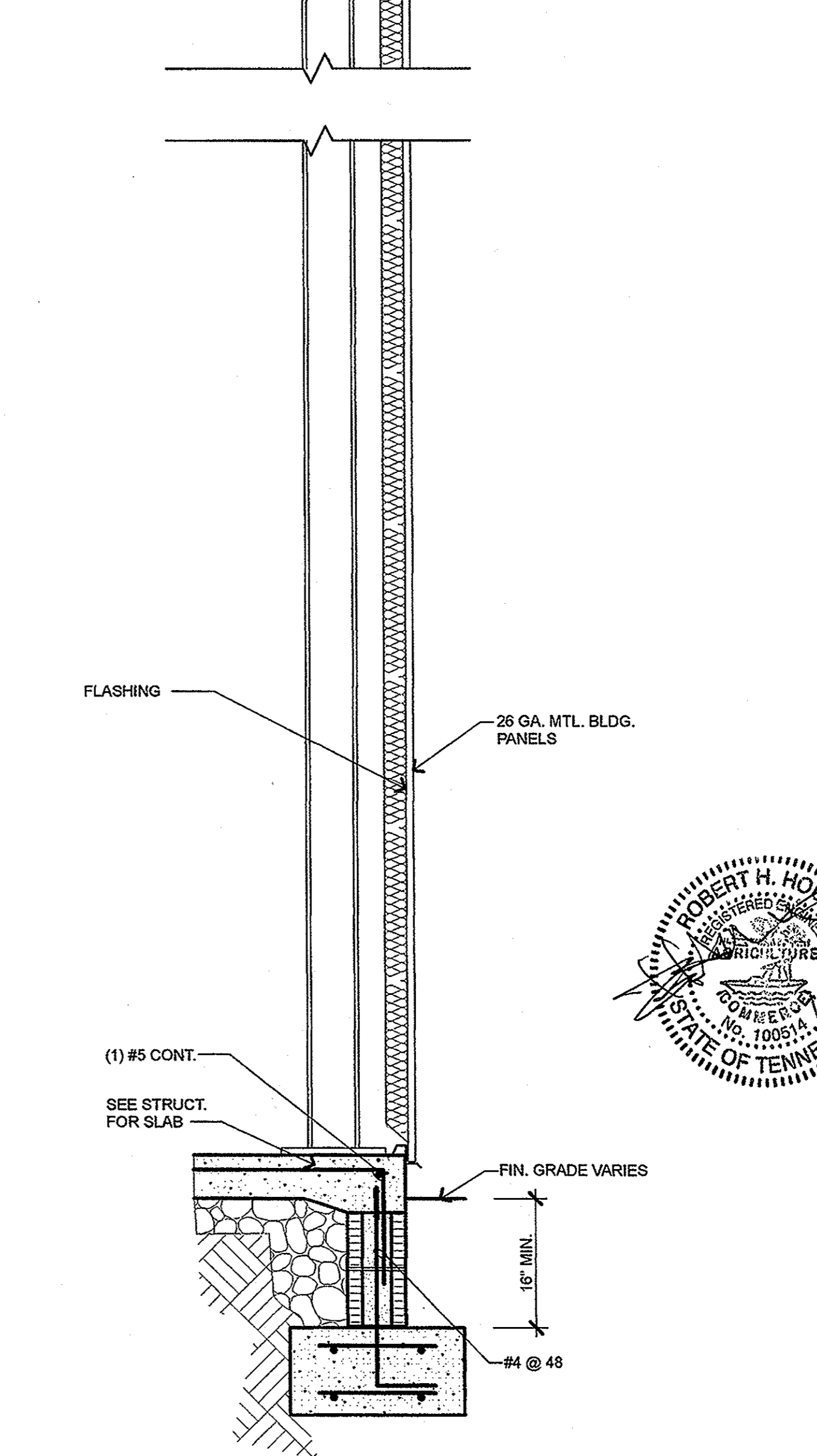
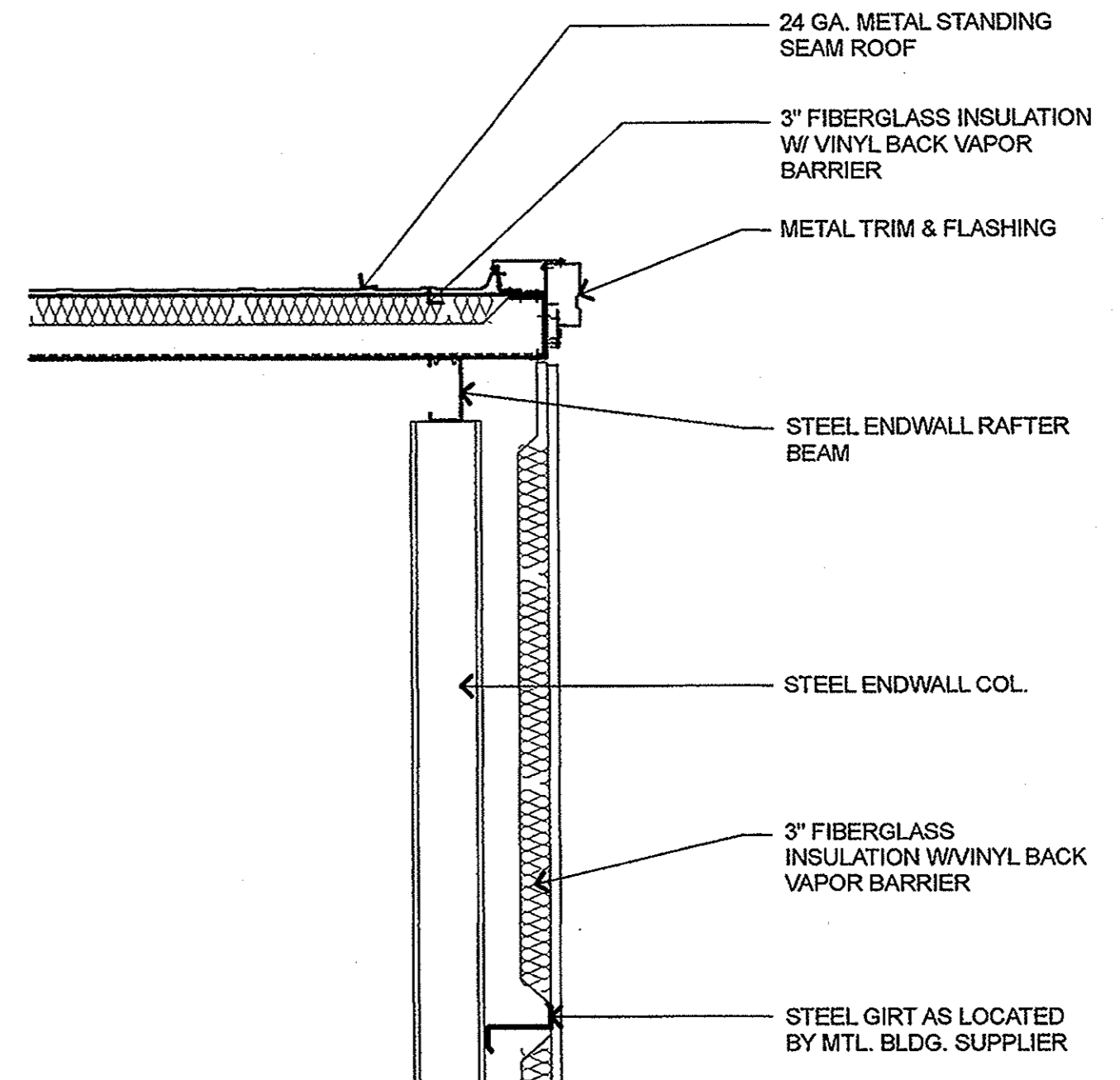
A NEW BUILDING FOR:  
**SOUTHERN BUILT**  
KNOXVILLE, TENNESSEE



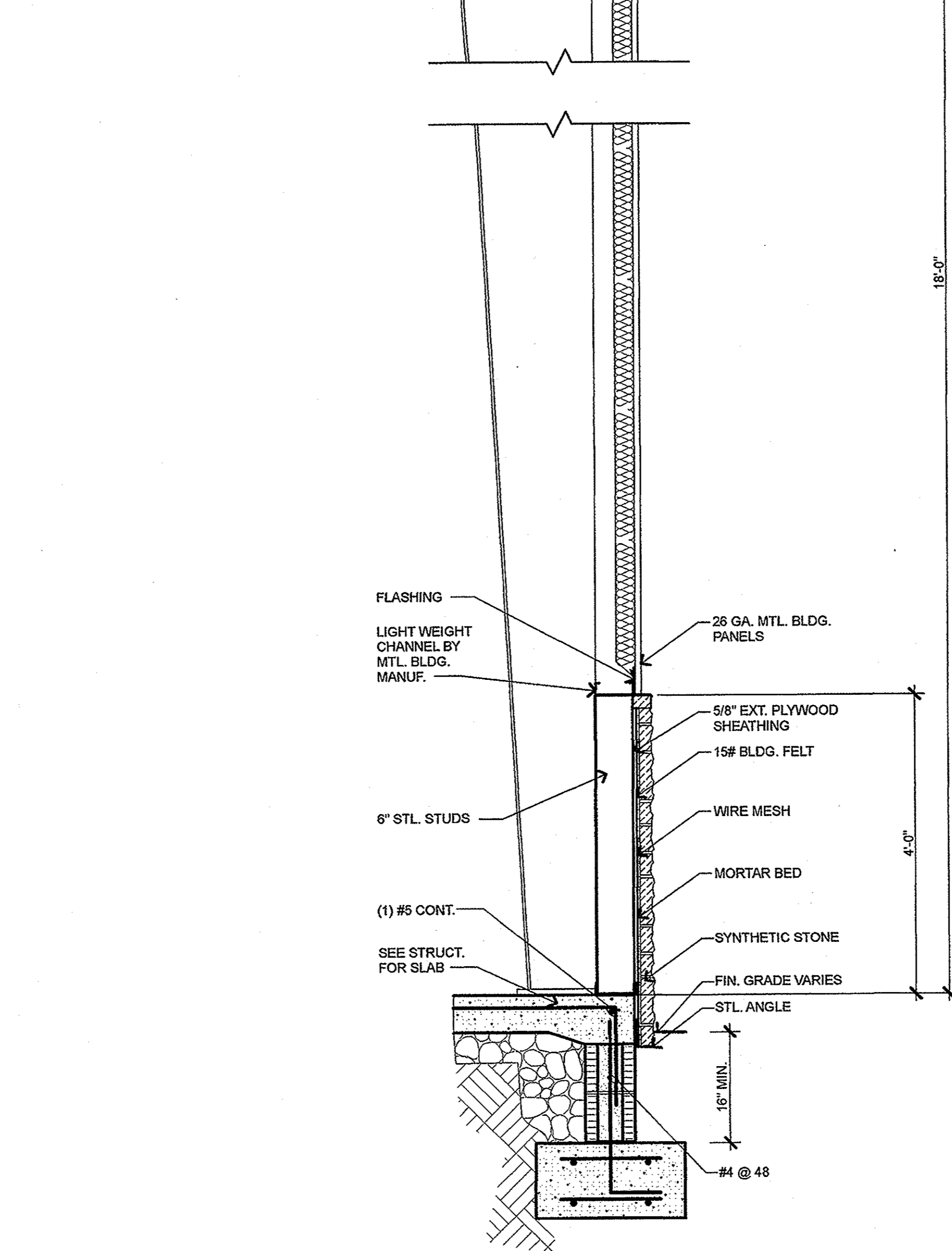
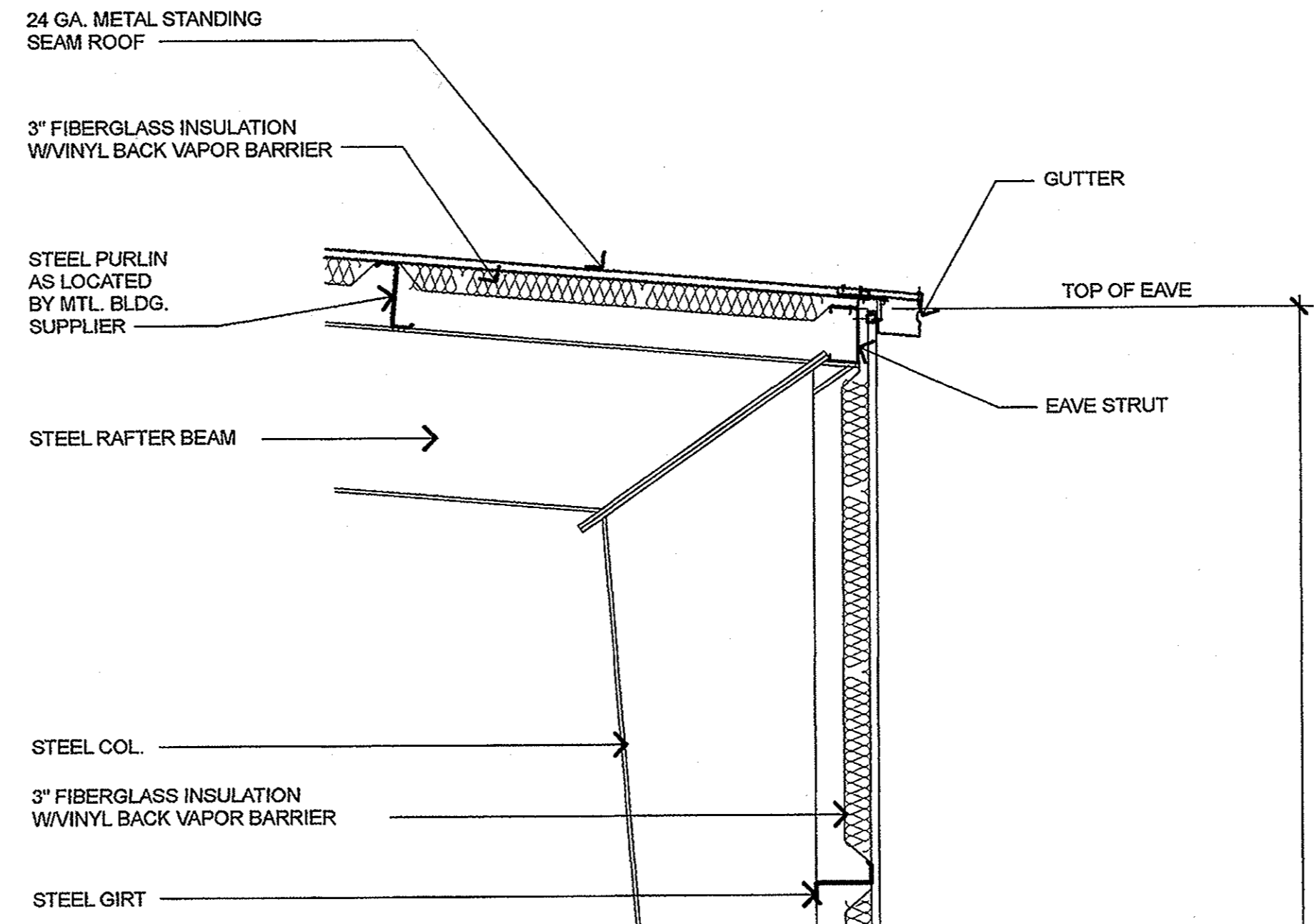
WALL SECTIONS

DATE: 20 DECEMBER 2007  
PROJECT NO.: 0793  
PROJECT MGR.: GAE

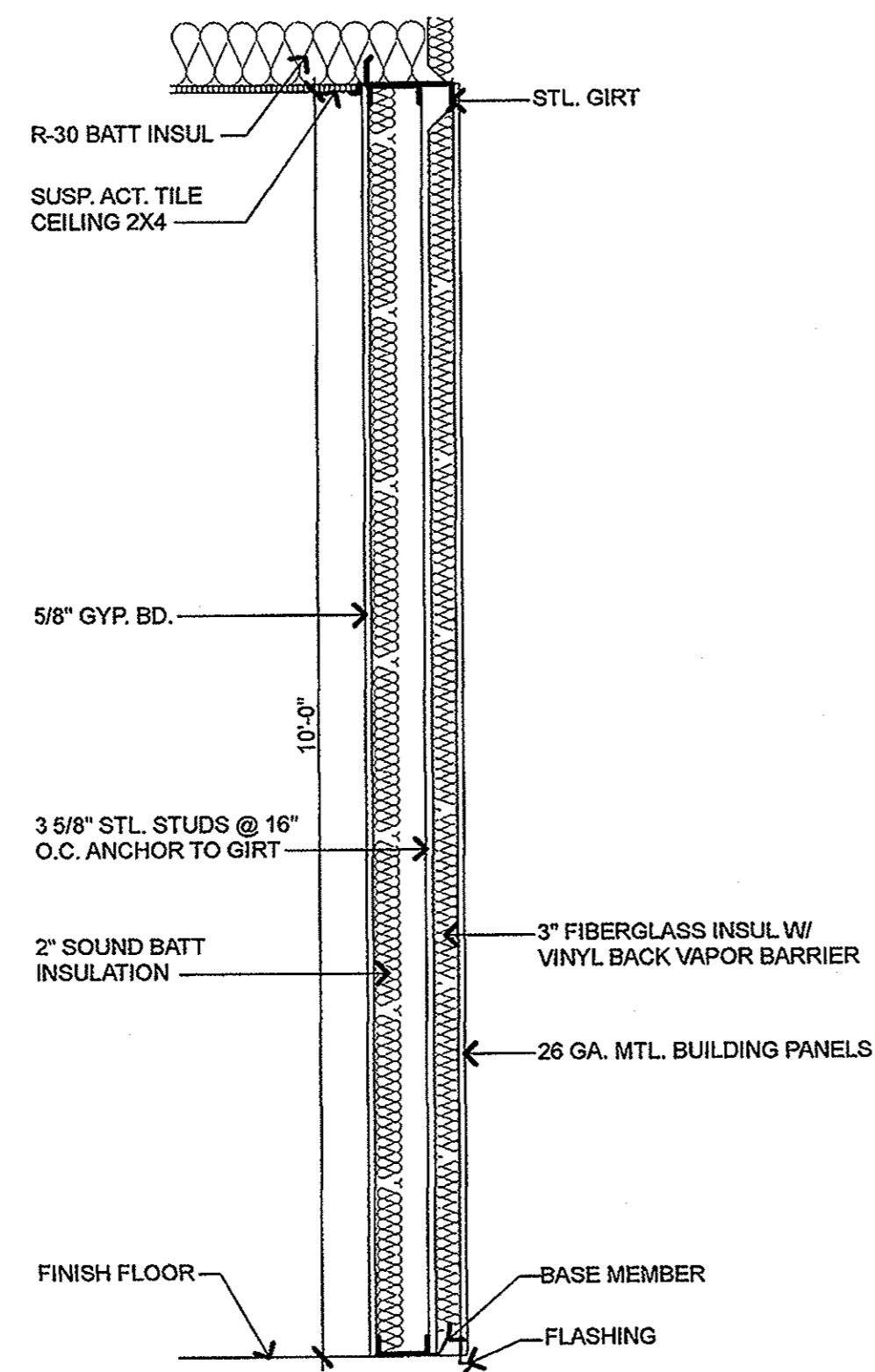
**A4**



1  
A4  
END WALL SECTION  
SCALE: 3/4" = 1'-0"



2  
A4  
WALL SECTION  
SCALE: 3/4" = 1'-0"

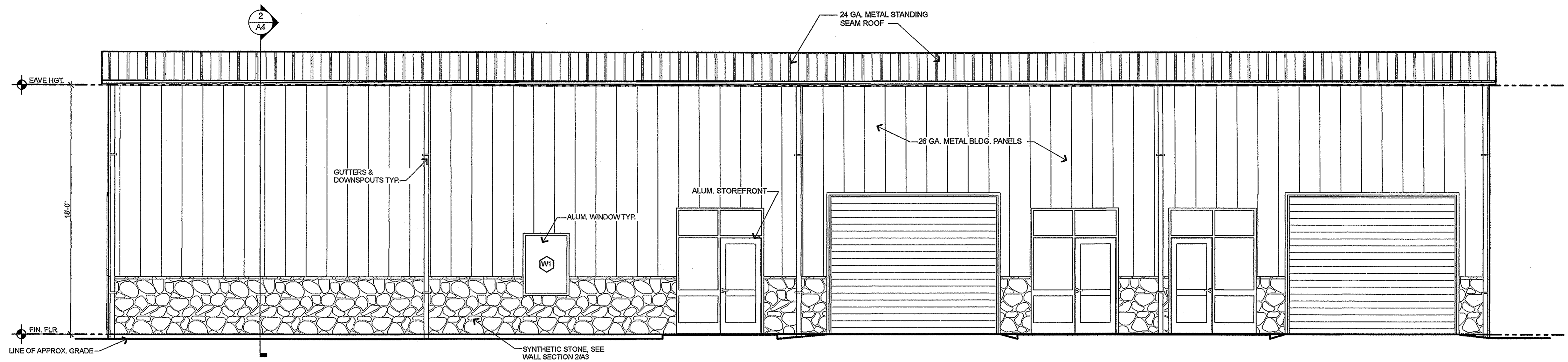


3  
A4  
WALL SECTION  
SCALE: 3/4" = 1'-0"

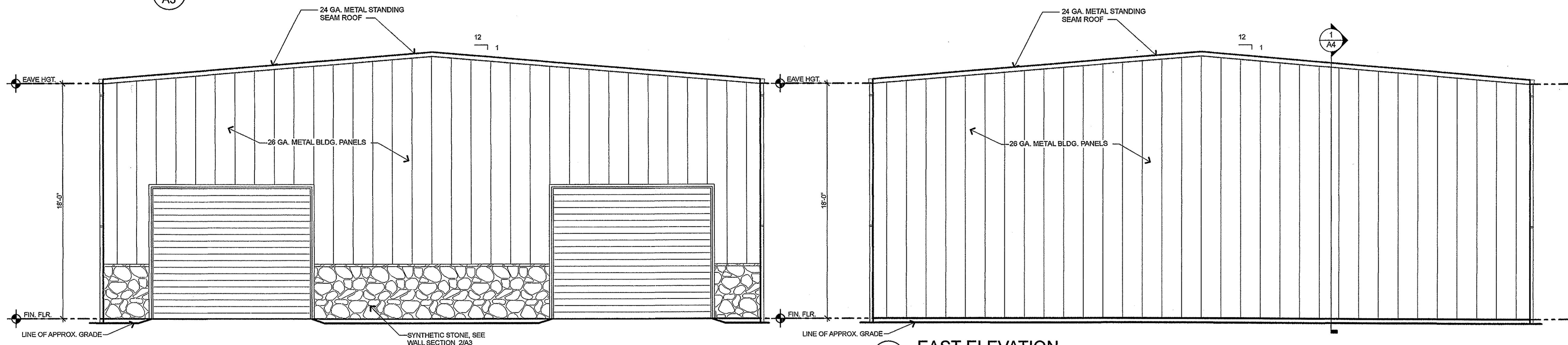
S:\GAE Projects\Sarah\0793 SouthernBuilt\SouthernBuilt.pln



**GEORGE ARMOUR  
EWART**  
404 Bearden Park Circle  
Knoxville, TN 37919  
Phone 865.602.7771  
Fax 865.602.7742  
Web: www.georgeewart.com

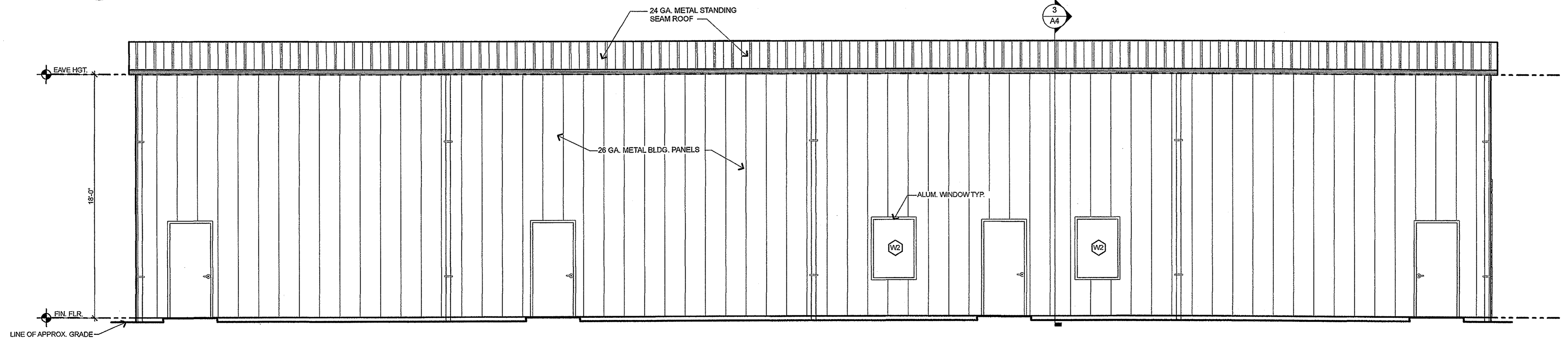


**1 SOUTH ELEVATION**  
SCALE: 1/4" = 1'-0"



**2 WEST ELEVATION**  
SCALE: 1/4" = 1'-0"

**3 EAST ELEVATION**  
SCALE: 1/4" = 1'-0"



**4 NORTH ELEVATION**  
SCALE: 1/4" = 1'-0"

A NEW BUILDING FOR:  
**SOUTHERN BUILT**  
KNOXVILLE, TENNESSEE



ELEVATIONS

DATE: 21 DECEMBER 2007  
PROJECT NO.: 0793  
PROJECT MGR.: GAE

**A3**

FINISH SCHEDULE							
NO.	ROOM NAME	FLOOR	BASE	WALL FIN.	CEILING	HGT.	NOTE/REMARKS
101	WAREHOUSE	CONC	VINYL	EXPOSED	EXPOSED	18'-0"	
102	RECEPTION	CPT	VINYL	PT	ACT	10'-0"	
103	W. TLT.	VCT	VINYL	PT	ACT	10'-0"	
104	M. TLT.	VCT	VINYL	PT	ACT	10'-0"	
105	HALL	CPT	VINYL	PT	ACT	10'-0"	
106	BREAK RM.	VCT	VINYL	PT	ACT	10'-0"	
107	OFFICE	CPT	VINYL	PT	ACT	10'-0"	
108	OFFICE	CPT	VINYL	PT	ACT	10'-0"	
109	OFFICE	CPT	VINYL	PT	ACT	10'-0"	
110	CONFERENCE	CPT	VINYL	PT	ACT	10'-0"	
111	WAITING	CPT	VINYL	PT	ACT	10'-0"	
112	WAREHOUSE	CONC	VINYL	EXPOSED	EXPOSED	18'-0"	
113	WAREHOUSE	CONC	VINYL	EXPOSED	EXPOSED	18'-0"	

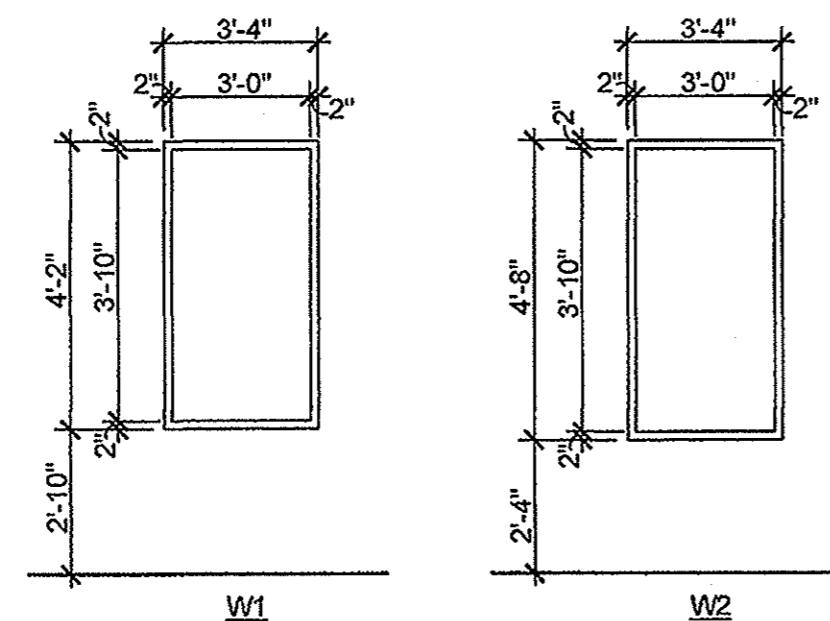
**FINISH NOTES:**

- ALL INTERIOR FINISHES SHALL COMPLY WITH CHAPTER 8 OF THE STANDARD BUILDING CODE, 1999 EDITION.
- ALL FINISHES TO BE VERIFIED WITH OWNER PRIOR TO INSTALLATION.
- PATCH ALL FINISHES WHERE DISTURBED BY THE WORK OF ANY SUB-CONTRACTOR.

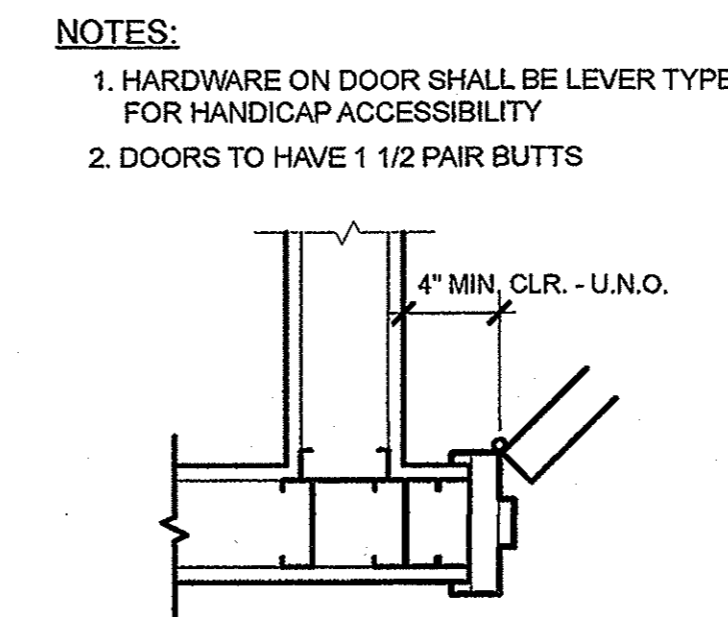
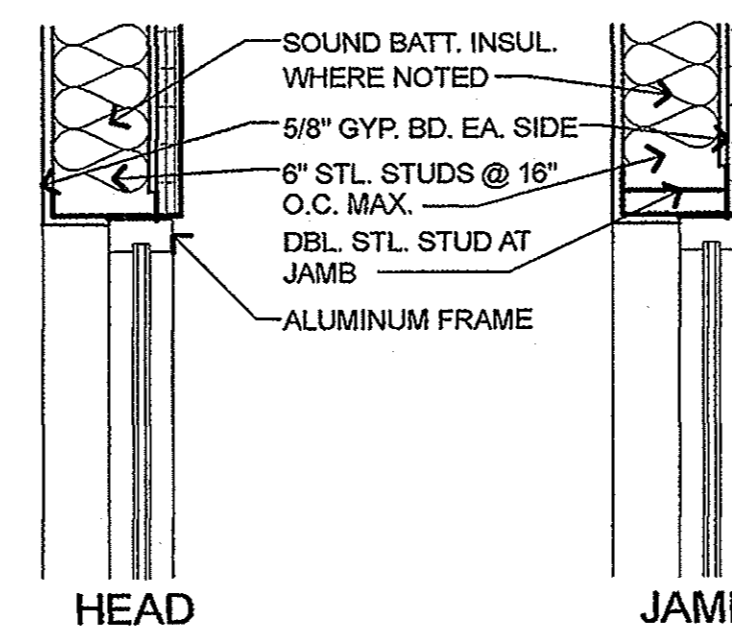
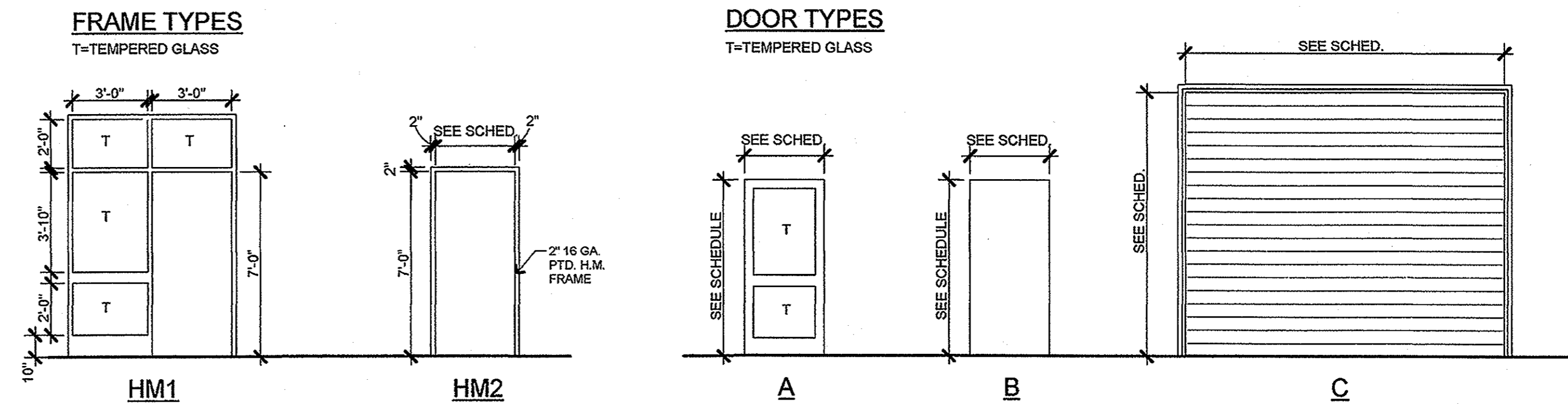
DOOR SCHEDULE									
MARK	W	SIZE H	T	LABEL	MAT'L	TYPE	FRAME MAT'L	HDWR SET	REMARKS
101A	12'-0"	10'-0"	-	-	-	C	-	-	
101B	12'-0"	10'-0"	-	-	-	C	-	-	
101C	3'-0"	7'-0"	1 3/4"	-	HM2	B	H.M.	ENTRY	
102	3'-0"	7'-0"	1 3/4"	-	HM2	B	H.M.	LOCK	
103	3'-0"	7'-0"	1 3/4"	-	HM2	B	H.M.	PRIVATE	
104	3'-0"	7'-0"	1 3/4"	-	HM2	B	H.M.	PRIVATE	
105	3'-0"	7'-0"	1 3/4"	-	HM2	B	H.M.	ENTRY	
106	3'-0"	7'-0"	1 3/4"	-	HM2	B	H.M.	PASS	
107	3'-0"	7'-0"	1 3/4"	-	HM2	B	H.M.	LOCK	
108	3'-0"	7'-0"	1 3/4"	-	HM2	B	H.M.	LOCK	
109	3'-0"	7'-0"	1 3/4"	-	HM2	B	H.M.	LOCK	
110	3'-0"	7'-0"	1 3/4"	-	HM2	B	H.M.	PASS	
111A	3'-0"	7'-0"	1 3/4"	-	HM1	A	H.M.	ENTRY	
111B	3'-0"	7'-0"	1 3/4"	-	HM2	B	H.M.	PASS	
112A	3'-0"	7'-0"	1 3/4"	-	HM1	A	H.M.	ENTRY	
112B	12'-0"	10'-0"	-	-	-	C	-	-	
112C	3'-0"	7'-0"	1 3/4"	-	HM2	B	H.M.	ENTRY	
113A	3'-0"	7'-0"	1 3/4"	-	HM1	A	H.M.	ENTRY	
113B	12'-0"	10'-0"	-	-	-	C	-	-	
113C	3'-0"	7'-0"	1 3/4"	-	HM2	B	H.M.	ENTRY	

**DOOR NOTES:**

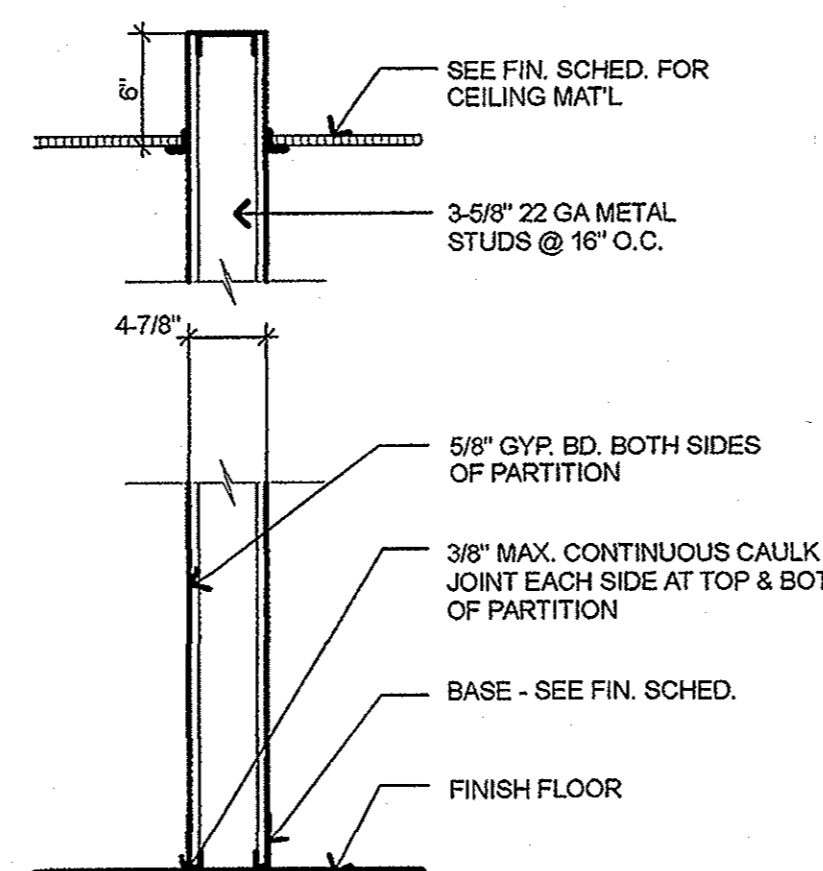
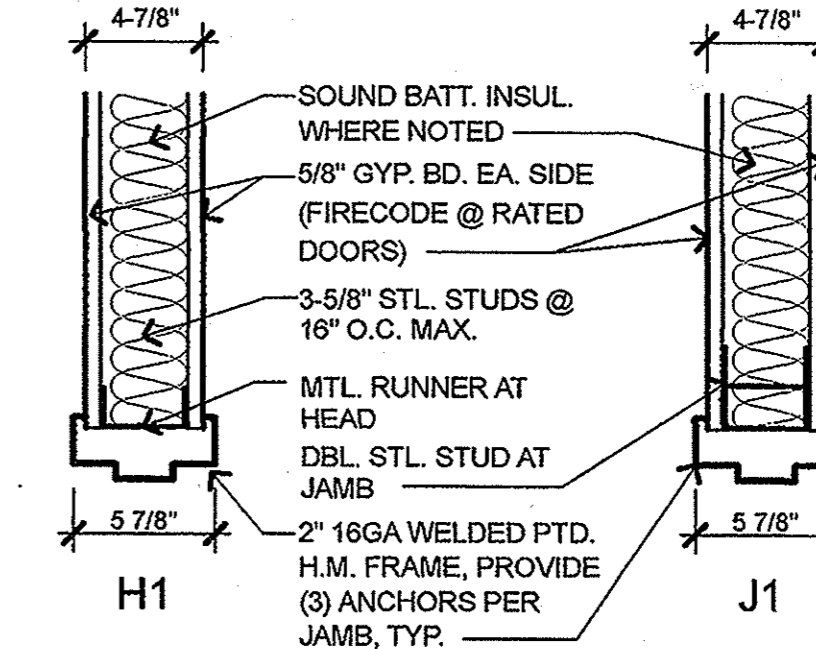
- CAULK BOTH SIDES OF ALL DOOR FRAMES.
- PROVIDE DBL. STUDS AND BASE ANCHORS AT ALL JAMBS, TYP.
- HARDWARE ON DOORS SHALL BE LEVER TYPE FOR HANDICAP ACCESSIBILITY.
- CONTRACTOR SHALL VERIFY ALL HARDWARE SETS W/ OWNER PRIOR TO INSTALLATION.



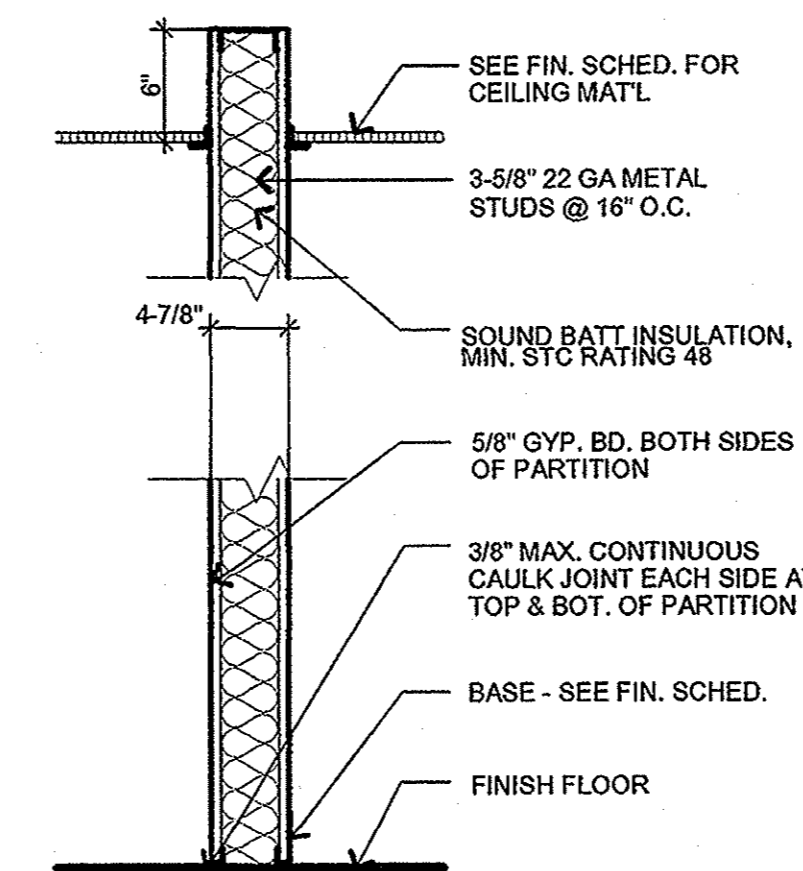
**WINDOW TYPES**  
SCALE: 1 1/2" = 1'-0" T = TEMPERED GLASS



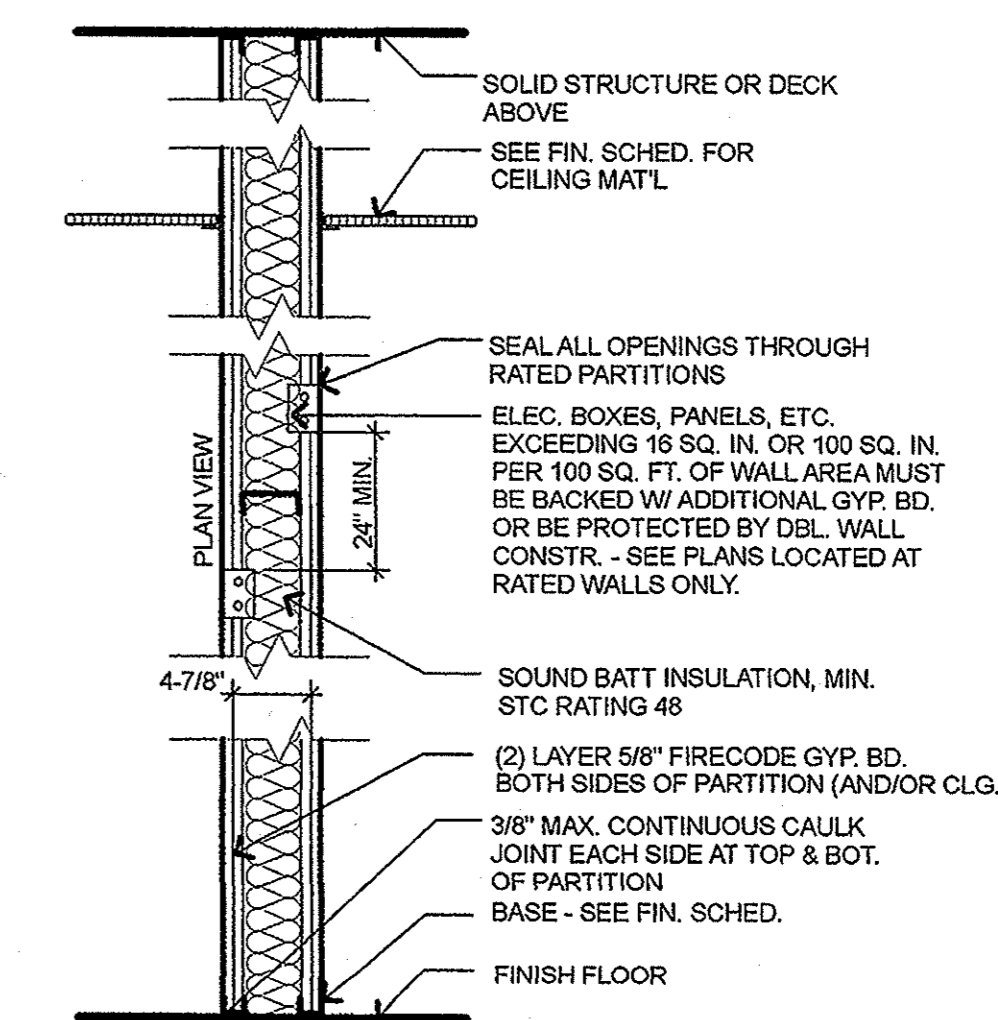
- NOTES:**
- HARDWARE ON DOOR SHALL BE LEVER TYPE FOR HANDICAP ACCESSIBILITY
  - DOORS TO HAVE 1 1/2 PAIR BUTTS



**W1 NON-RATED PART.**  
SCALE: NONE



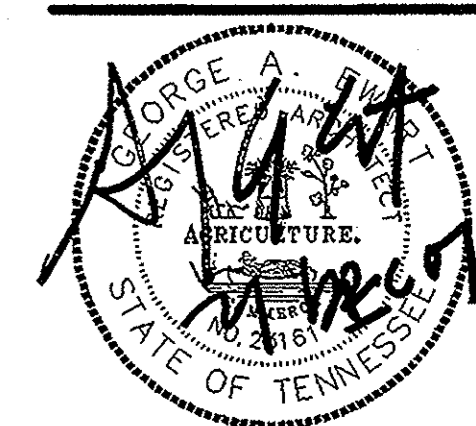
**W2 SOUND PARTITION**  
SCALE: NONE



**W3 2-HR RATED PART.**  
SCALE: NONE / U.L. DESIGN #U419

**ARCHITECT**  
**GEORGE ARMOUR EWART**  
404 Bearden Park Circle  
Knoxville, TN 37919  
Phone 865.602.7771  
Fax 865.602.7742  
Web: www.georgeewart.com

A NEW BUILDING FOR:  
**SOUTHERN BUILT**  
KNOXVILLE, TENNESSEE



SCHEDULES & DETAILS

DATE: 21 DECEMBER 2007  
PROJECT NO.: 0793  
PROJECT MGR.: GAE

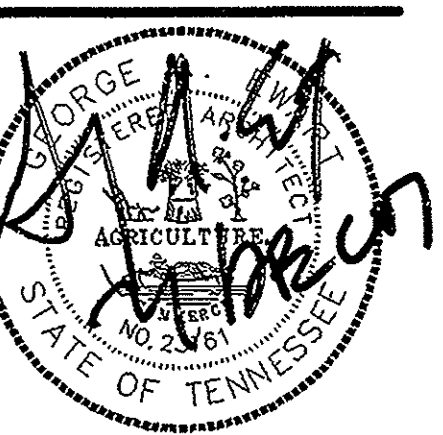
**A2**



**GEORGE ARMOUR  
EWART**

404 Bearden Park Circle  
Knoxville, TN 37919  
Phone 865.602.7771  
Fax 865.602.7742  
Web: www.georgeewart.com

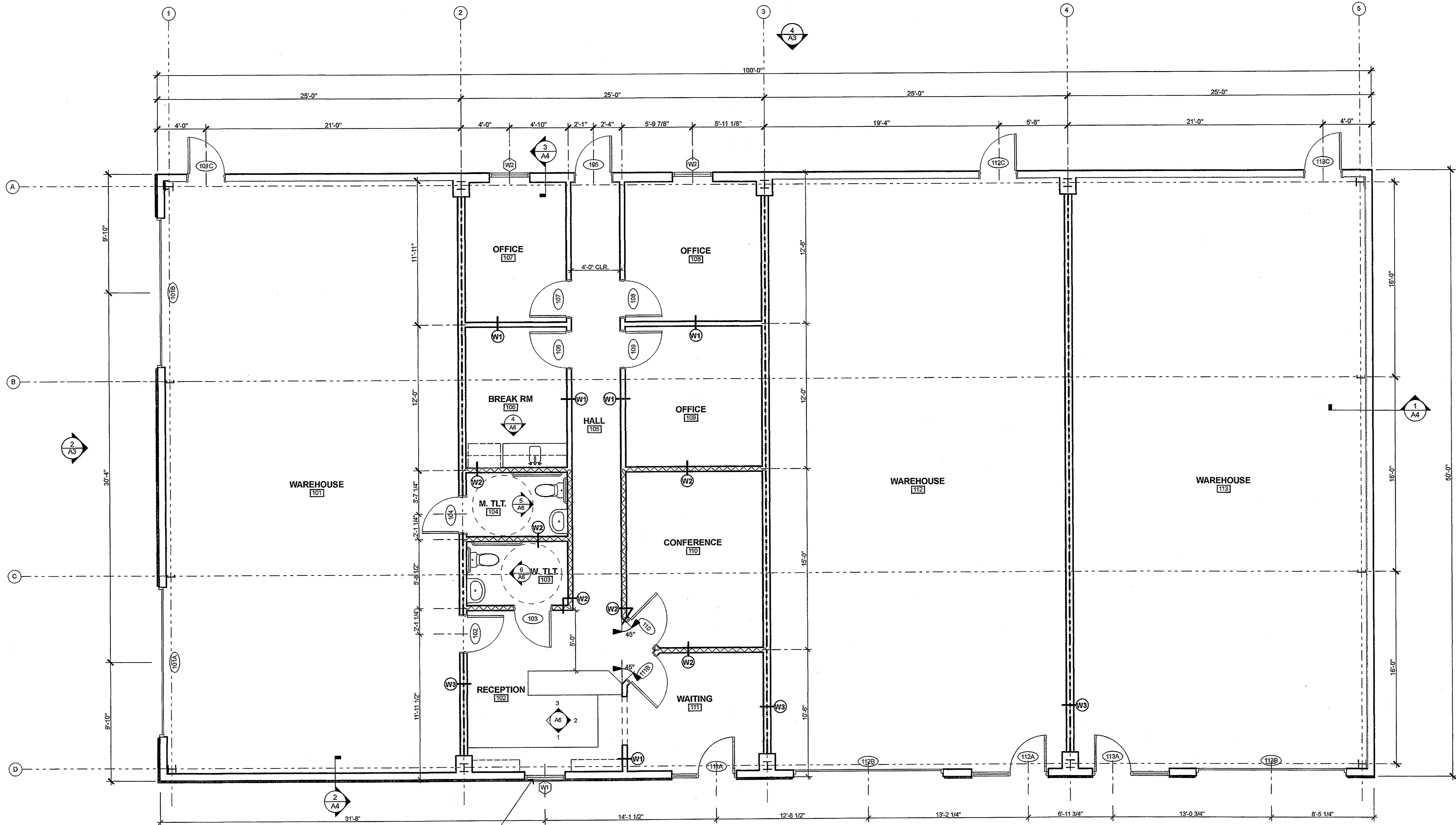
A NEW BUILDING FOR:  
**SOUTHERN BUILT**  
KNOXVILLE, TENNESSEE



FLOOR PLAN

DATE: 21 DECEMBER 2007  
PROJECT NO.: 0793  
PROJECT MGR.: GAE

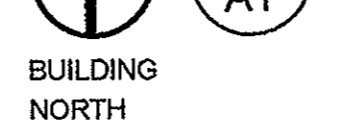
**A1**



PROVIDE PRECAST LINTEL (16" BRG. EACH END) OR 8" BOND W/ (2) #5 CONT. (24" BRG. EACH END) AT ALL MASONRY OPENINGS

**FLOOR PLAN**

SCALE: 1/4" = 1'-0"



**WALL LEGEND**

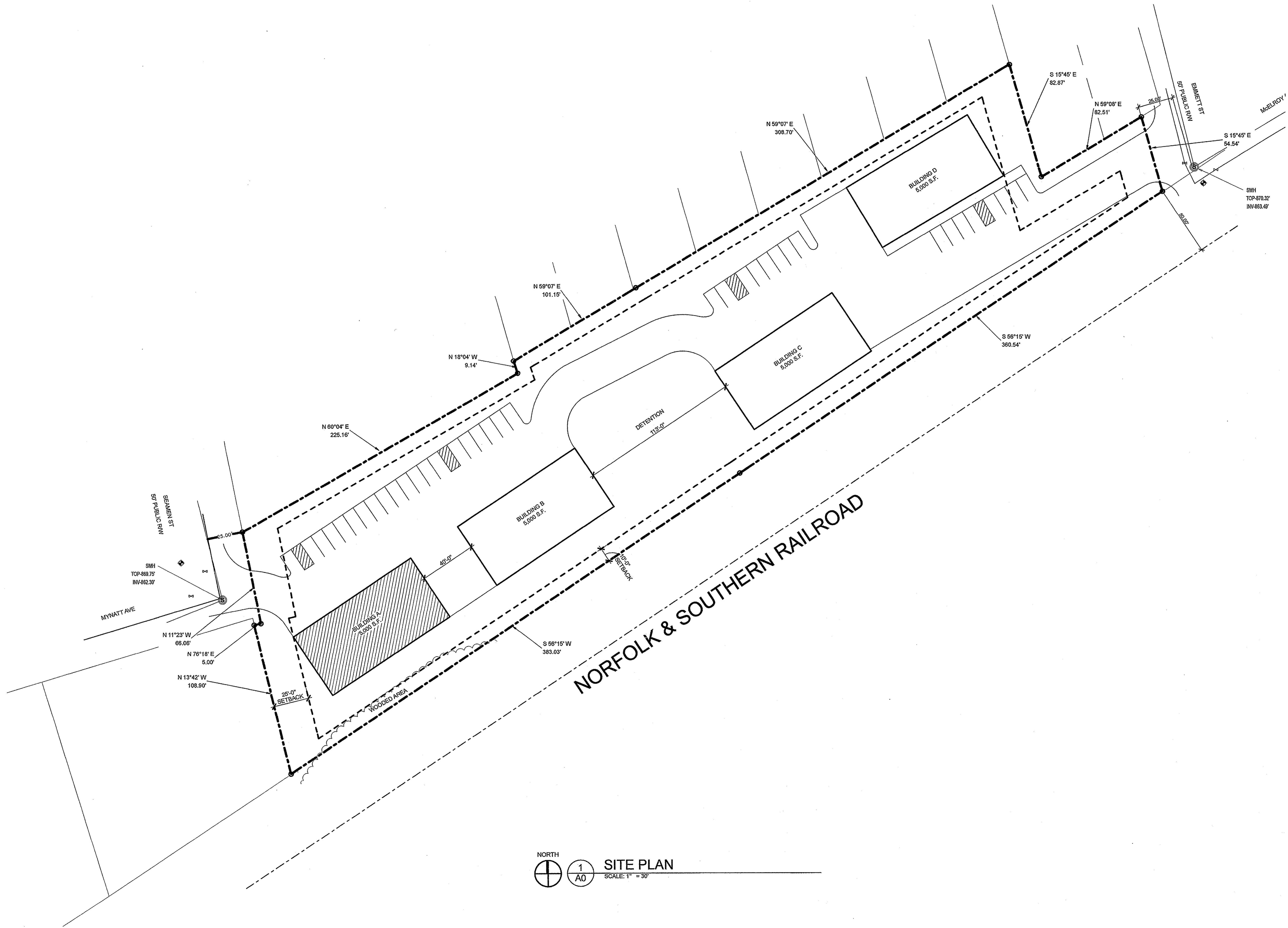
- 2-HR. RATED STL. STUD PARTITION, U.L. DESIGN U419.
- NON-RATED 3 5/8" MIN. 22 GA STL. STUDS @ 16" O.C. MAX. W/ 5/8" GYP.
- SOUND BATT. INSULATION

**GENERAL NOTES:**

1. AT CONCRETE WALKS & SLABS THAT ABUT MASONRY WALLS INSTALL AN 1/2" EXP. JT.
2. EXTERIOR DOORS SHALL RECEIVE WEATHER-STRIPPING.
3. HARDWARE ON DOORS SHALL BE LEVER TYPE FOR HANDICAP ACCESSIBILITY.
4. ALL HVAC EQUIPMENT SHALL HAVE ELECTRICAL DISCONNECTS.



**GEORGE ARMOUR  
EWART**  
404 Bearden Park Circle  
Knoxville, TN 37919  
Phone 865.602.7771  
Fax 865.602.7742  
Web: www.georgeewart.com



NORTH  
1  
A0  
SCALE: 1" = 30'

NORFOLK & SOUTHERN RAILROAD

A NEW BUILDING FOR:  
**SOUTHERN BUILT**  
KNOXVILLE, TENNESSEE

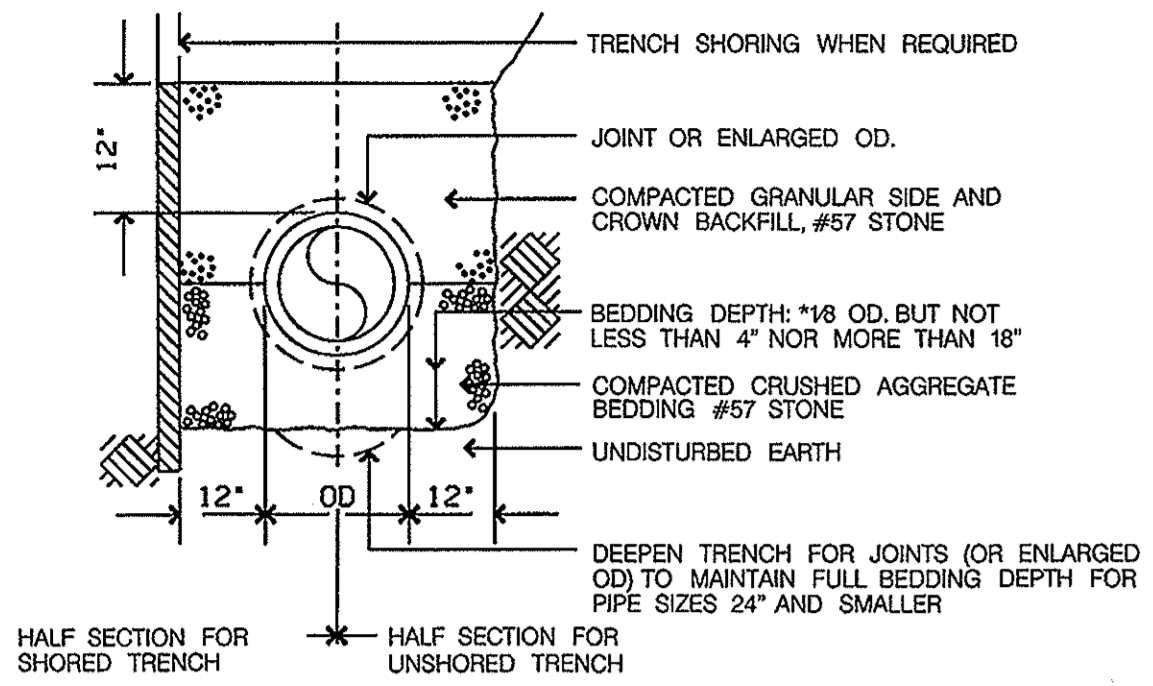


ARCHITECTURAL SITE  
PLAN

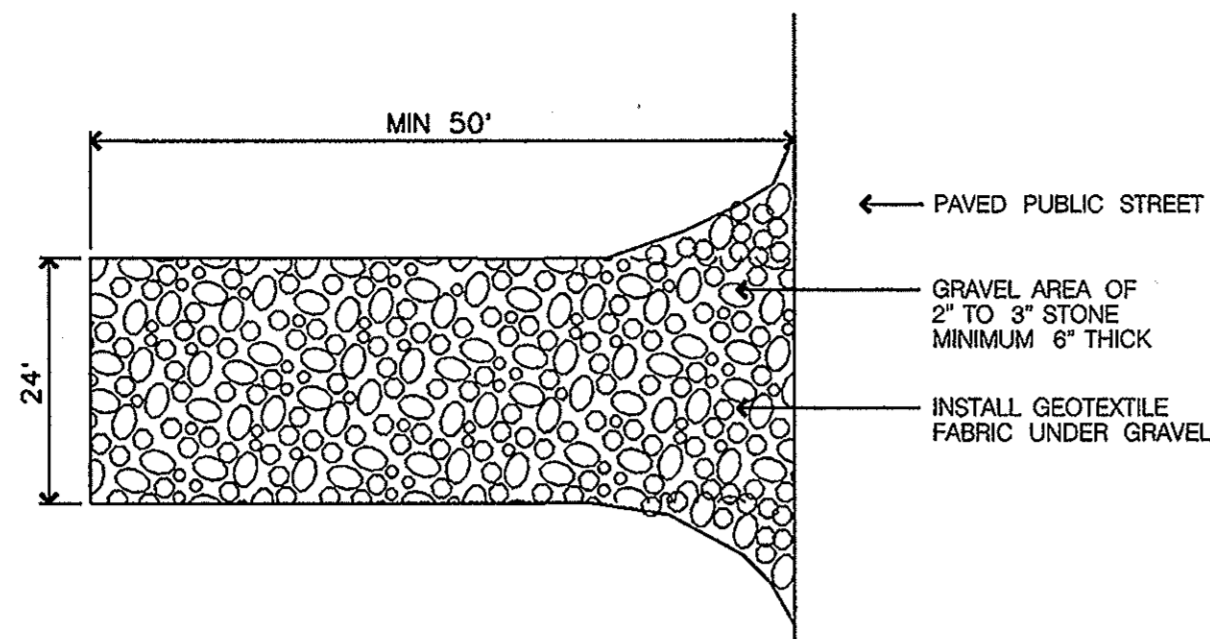
DATE: 21 DECEMBER 2007  
PROJECT NO.: 0793  
PROJECT MGR.: GAE

**A0**

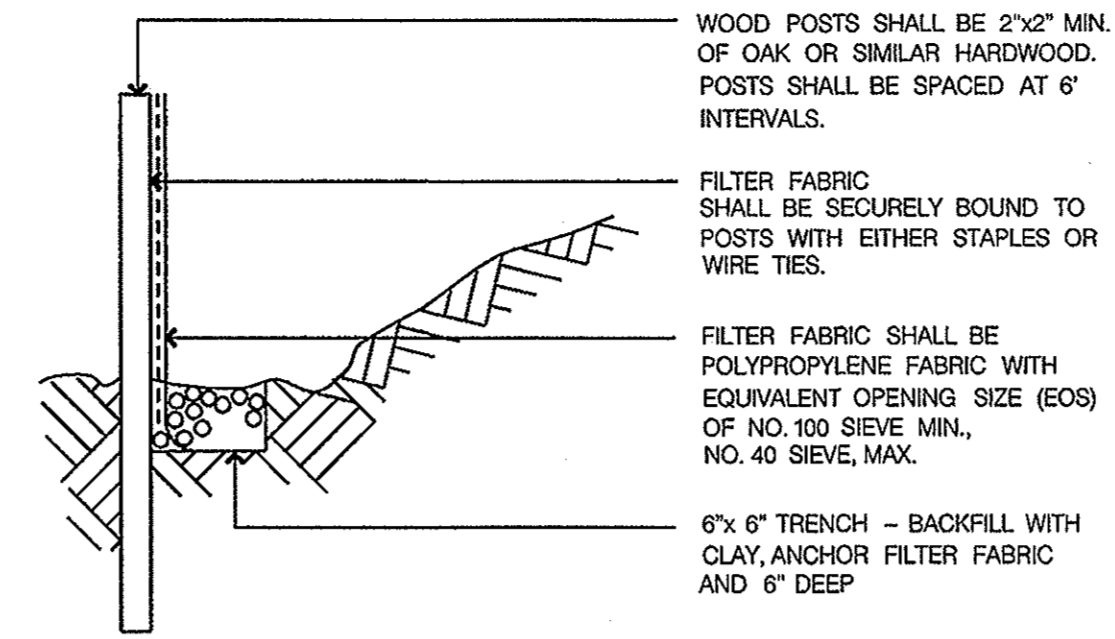
S:\GAE Projects\Sarah\0793 SouthernBuilt\SouthernBuilt.pln



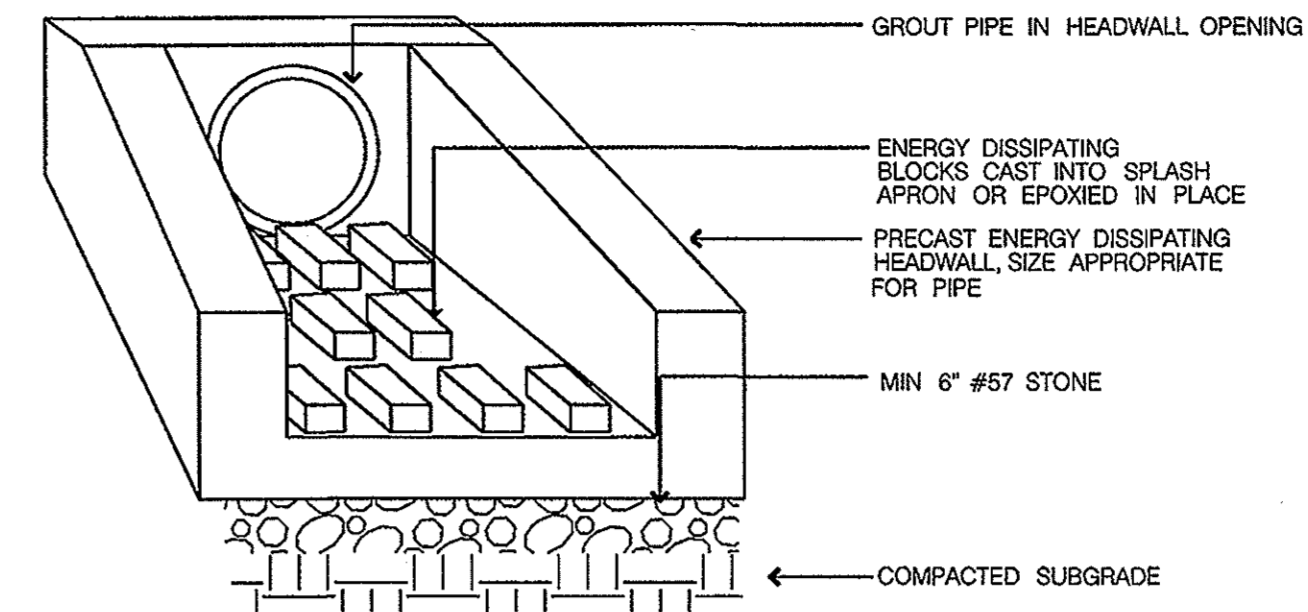
1 TYPICAL PIPE BEDDING  
C2.2 NOT TO SCALE



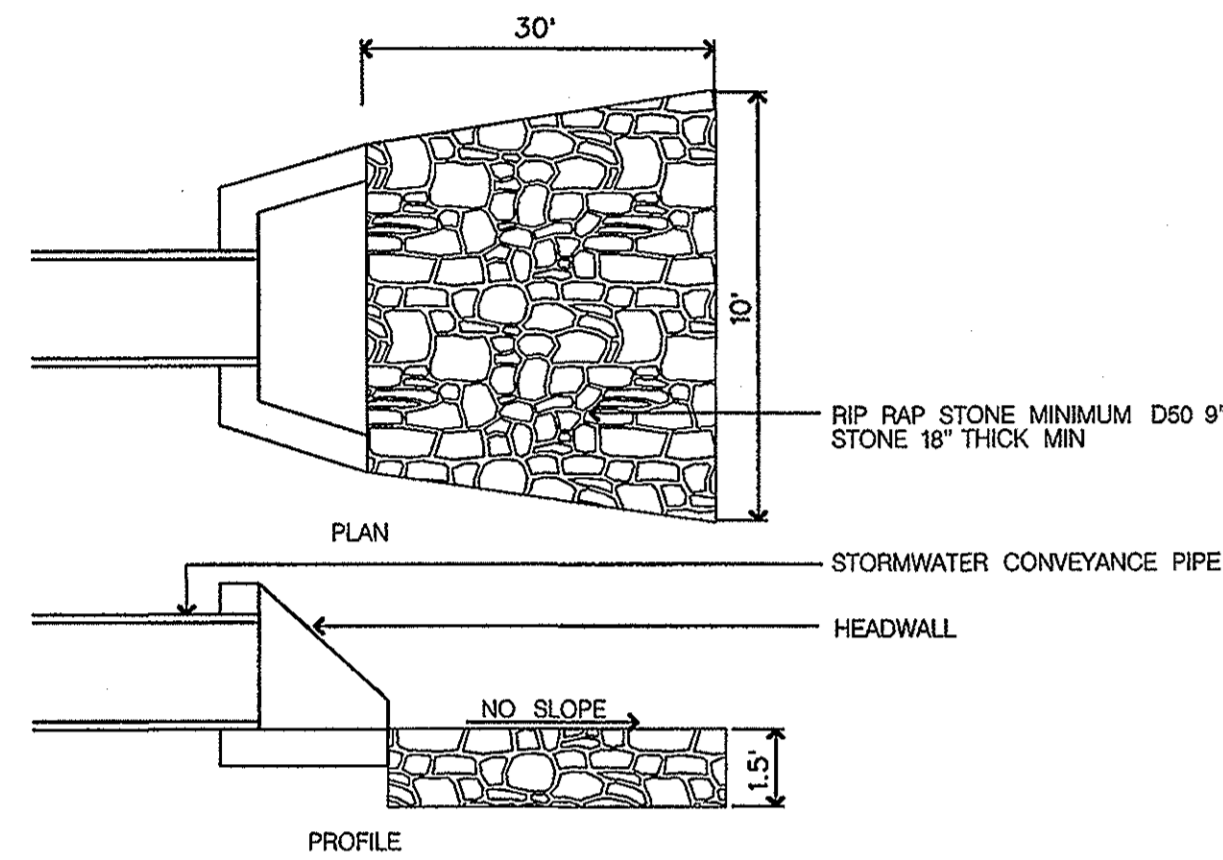
2 CONSTRUCTION ENTRANCE DETAIL  
C2.2 NOT TO SCALE



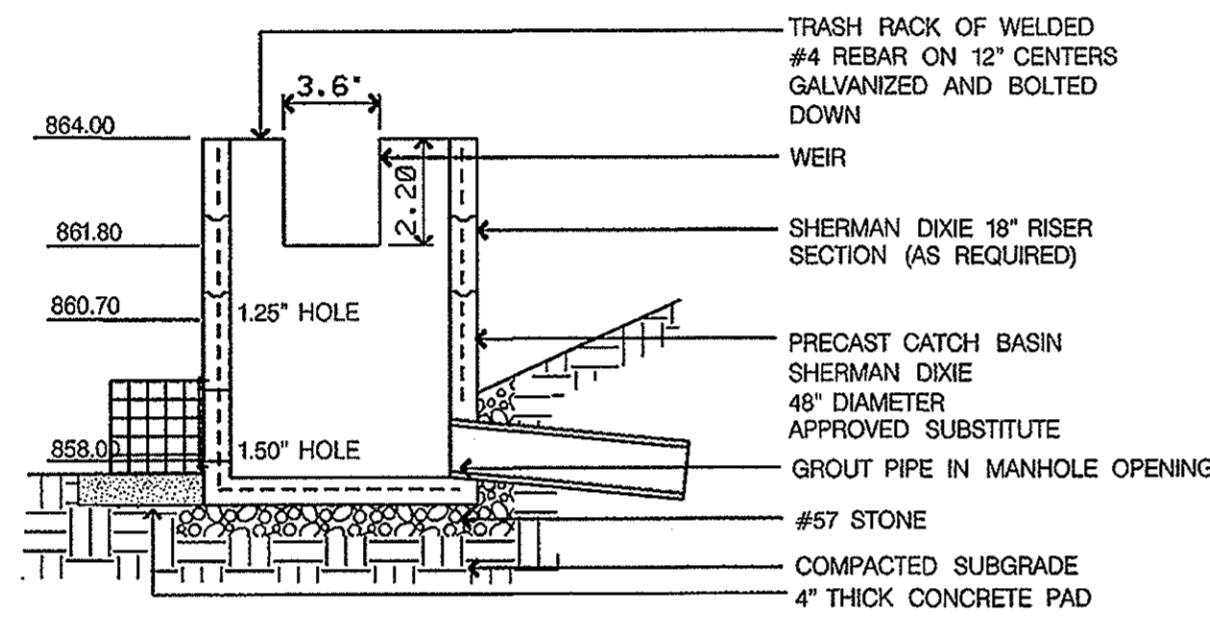
3 SILT FENCE DETAIL  
C2.2 NOT TO SCALE



4 ENERGY DISSIPATING HEADWALL DETAIL  
C2.2 NOT TO SCALE

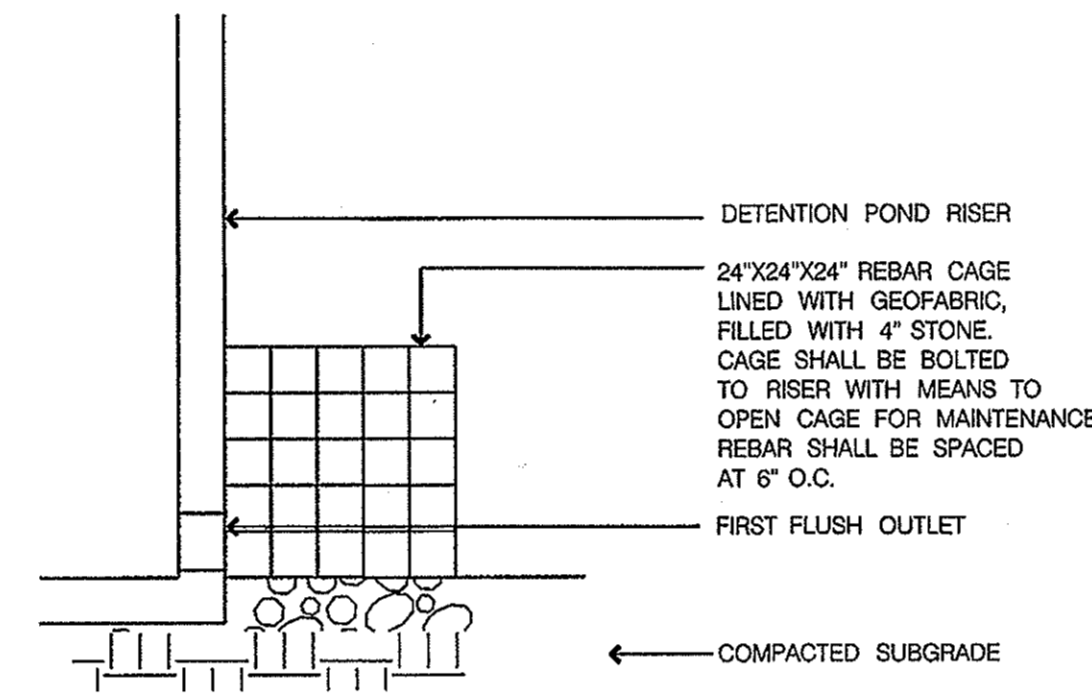


5 OUTLET PROTECTION DETAIL  
C2.2 NOT TO SCALE



NOTE: IT IS THE REQUEST OF TDEC THAT THE 1.5" ORIFICE ONLY BE INSTALLED AFTER THE SITE HAS BEEN STABILIZED TO PROVIDE WET STORAGE. THEREFORE THE 1.5" HOLE AT THE BASE OF THE STRUCTURE SHOULD ONLY BE BORED AFTER FINAL STABILIZATION OF THE SITE.

6 POND RISER DETAIL  
C2.2 NOT TO SCALE



7 WATER QUALITY FILTER  
C2.2 NOT TO SCALE



**GEORGE ARMOUR  
EWART**  
404 BEARDEN PARK CIRCLE  
KNOXVILLE, TN 37919  
Voice: 865 - 602 - 7771  
Fax: 865 - 602 - 7742  
Web Site: www.georgeewart.com

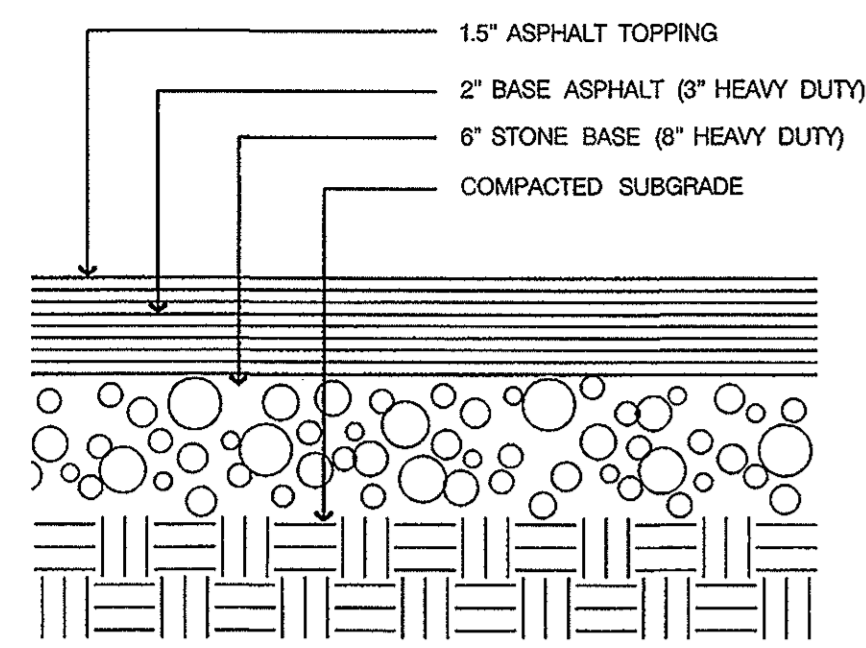
NEW BUILDINGS FOR  
**SOUTHERN BUILT**  
KNOXVILLE, TENNESSEE



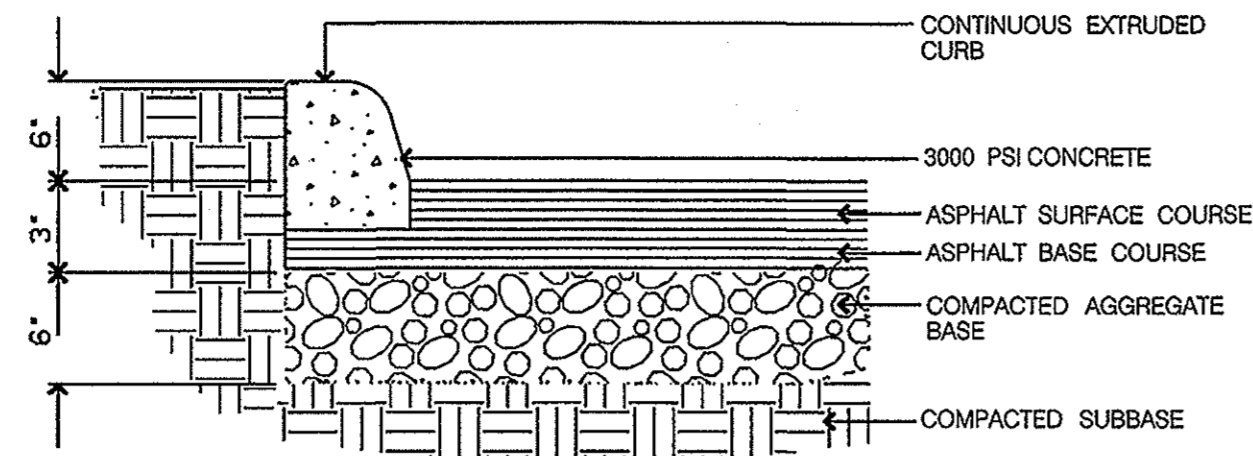
SITE DETAILS - 2

DATE: 24 DEC 2007  
PROJECT NO.: 06110  
PROJECT MGR.: SARAH

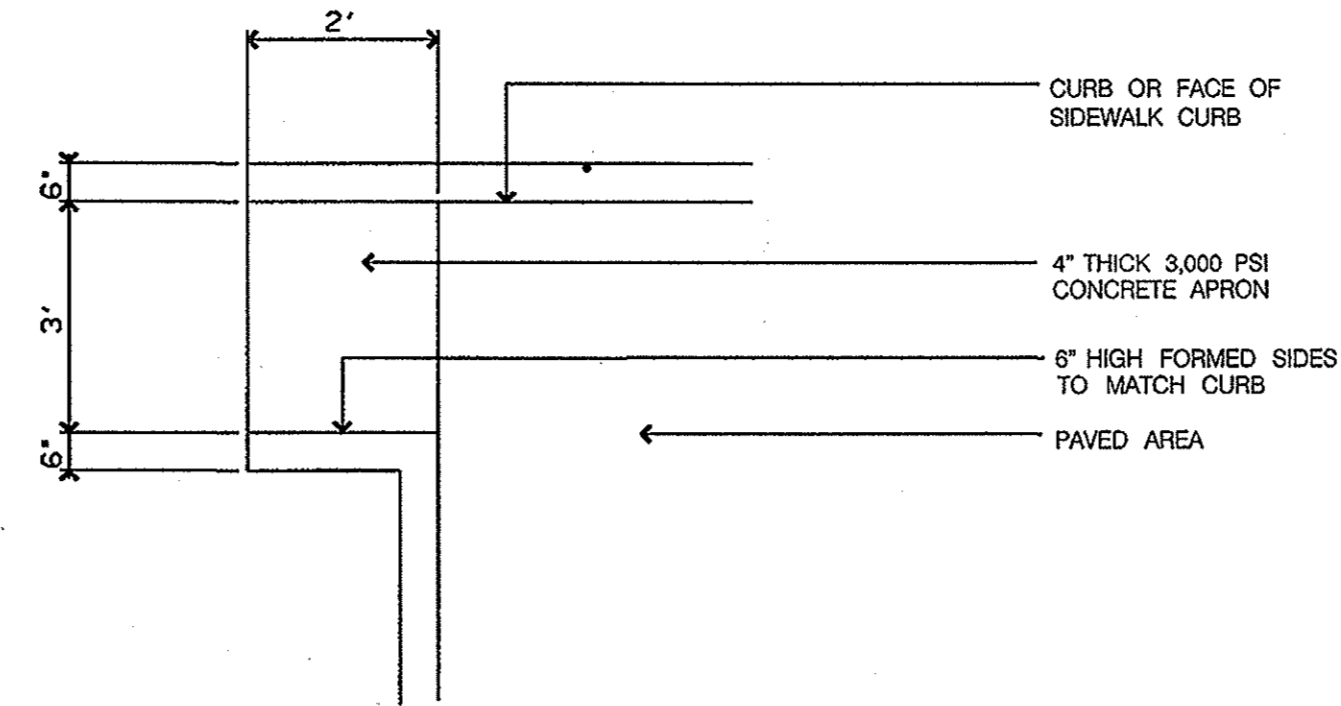
C2.2



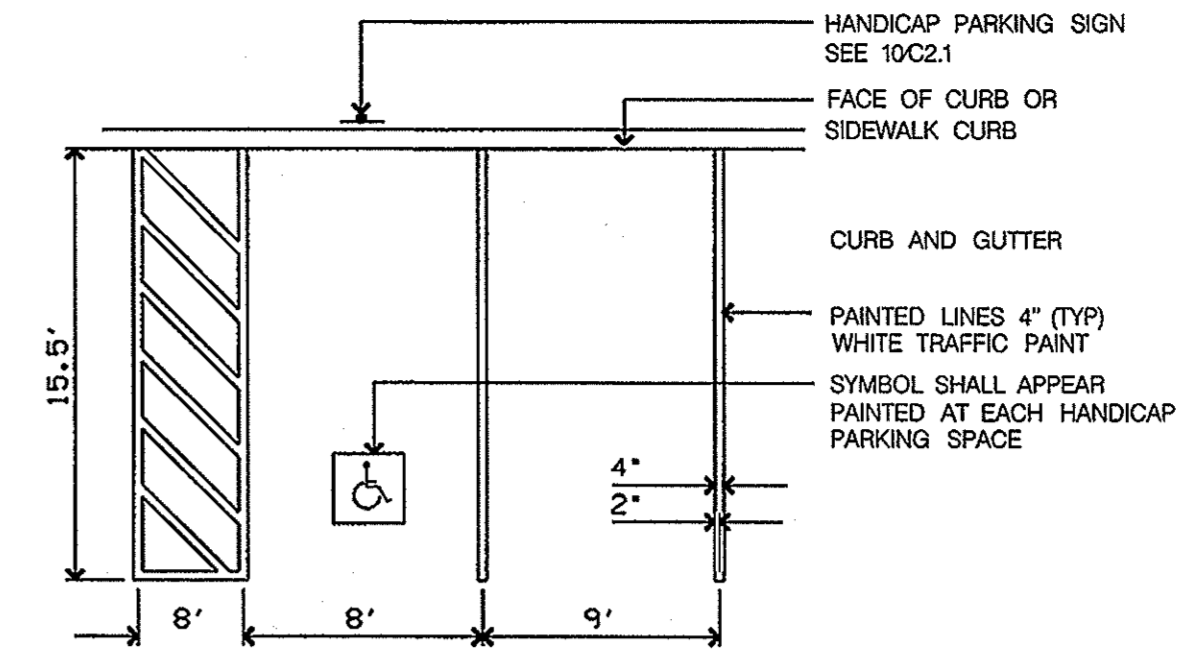
1 TYPICAL PAVING SECTION  
C2.1 NOT TO SCALE



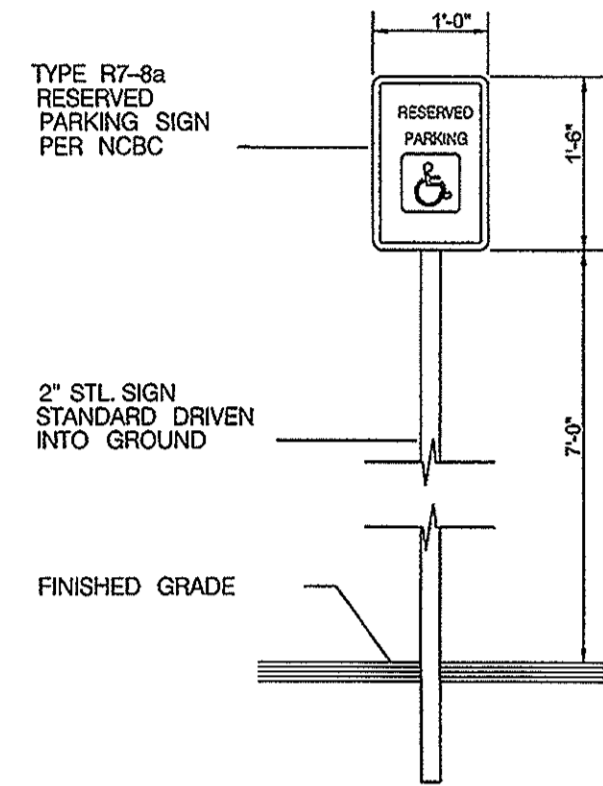
2 TYPICAL CURB  
C2.1 NOT TO SCALE



3 CURB CUT DETAIL  
C2.1 NOT TO SCALE



4 TYPICAL PARKING SPACE DETAIL  
C2.1 NOT TO SCALE



5 HANDICAP SIGN  
C2.1 NOT TO SCALE



**GEORGE ARMOUR  
EWART**  
404 BEARDEN PARK CIRCLE  
KNOXVILLE, TN 37919  
Voice: 865 - 602 - 7771  
Fax: 865 - 602 - 7742  
Web Site: www.georgeewart.com

NEW BUILDINGS FOR  
**SOUTHERN BUILT**  
KNOXVILLE, TENNESSEE



SITE DETAILS - 1

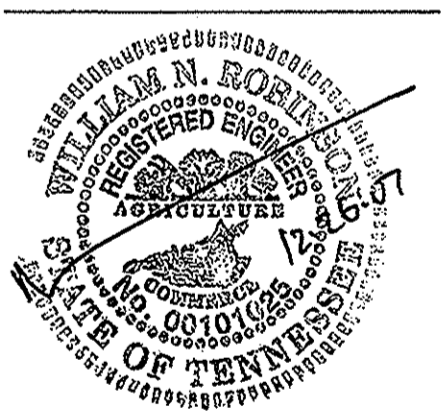
DATE: 24 DEC 2007  
PROJECT NO.: 06110  
PROJECT MGR.: SARAH

C2.1



**GEORGE ARMOUR  
EWART**  
ARCHITECT  
404 BEARDEN PARK CIRCLE  
KNOXVILLE, TN 37919  
Voice: 865-602-7771  
Fax: 865-602-7742  
Web Site: www.georgeewart.com

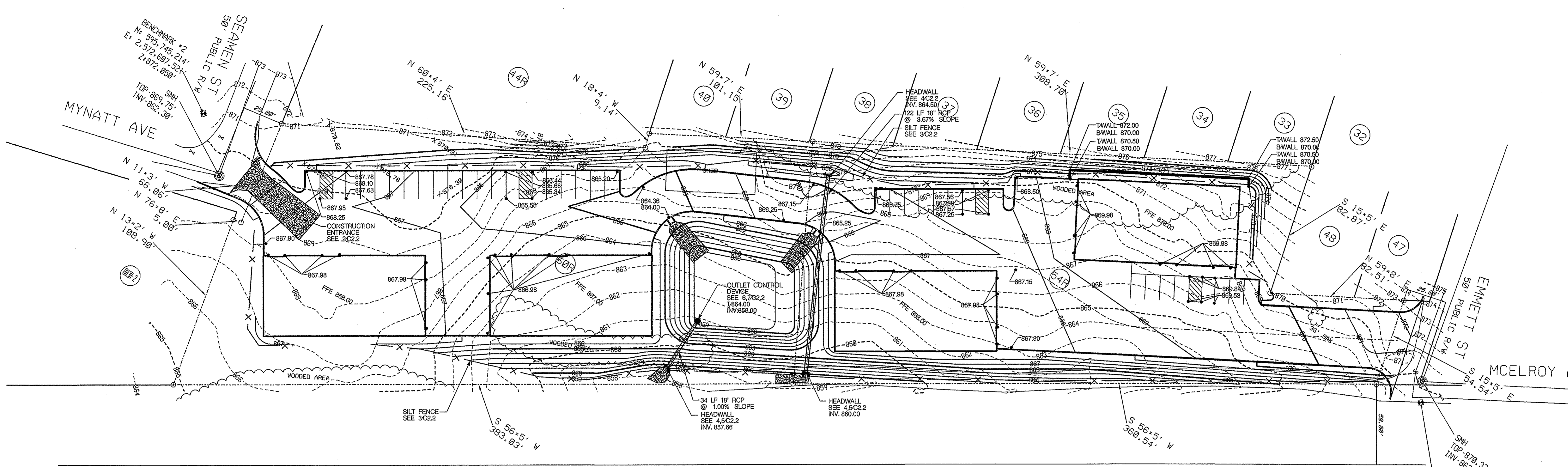
NEW BUILDINGS FOR  
**SOUTHERN BUILT**  
KNOXVILLE, TENNESSEE



SITE GRADING PLAN

DATE: 24 DEC 2007  
PROJECT NO.: 06110  
PROJECT MGR.: SARAH

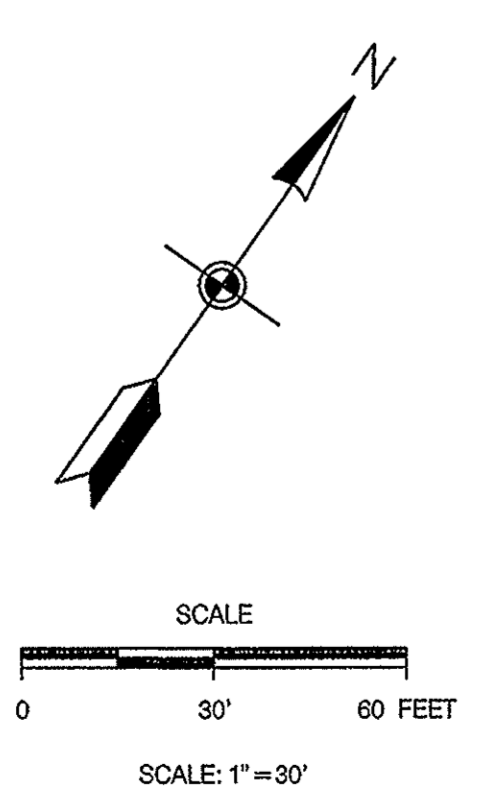
C1.2



NORFOLK & SOUTHERN RAILROAD

**LEGEND:**

EXISTING	PROPOSED	
535	535	GROUND CONTOUR ELEVATION
535.25'	535.25'	SPOT ELEVATION
[Symbol]	[Symbol]	STRUCTURE
[Symbol]	NA	PROPERTY LINE
[Symbol]	NA	EASEMENT
[Symbol]	[Symbol]	EDGE OF PAVEMENT
SD	SD	STORM DRAIN
SS	SS	SANITARY SEWER
FW	FW	POTABLE WATER
NG	NG	NATURAL GAS
UE	UE	UNDERGROUND ELECTRICAL
○	●	MANHOLE
○	⊙	WATER METER
	NA	FIRE HYDRANT
→	→	SURFACE FLOW
NA	—X—	SILT FENCING
NA	[Symbol]	STAKED HAYBALES
NA	[Symbol]	CURB
NA	[Symbol]	CONCRETE PAVEMENT
NA	[Symbol]	ASPHALT PAVEMENT
NA	[Symbol]	RIP RAP

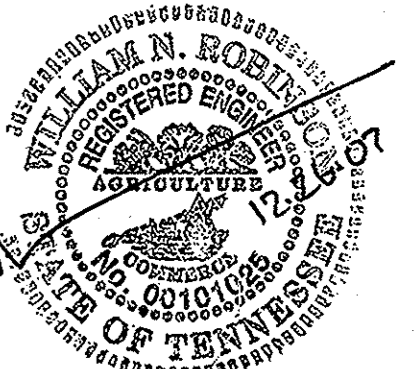


- NOTES:**
1. SITE BENCHMARK: CONTACT SURVEYOR FOR SITE BENCHMARK LOCATION AND ELEVATION. DATUM NAVD 88.
  2. SITE BOUNDARY AND TOPOGRAPHIC INFORMATION IS BASED ON A SURVEY PROVIDED BY THE OWNER, THE ARCHITECT AND THE ENGINEER. ACCEPT NO RESPONSIBILITY FOR THE ACCURACY AND/OR COMPLETENESS OF EXISTING CONDITIONS INFORMATION PROVIDED BY OTHERS.
  3. UTILITY INFORMATION IS BASED ON INFORMATION OBTAINED FROM THE UTILITY PROVIDERS. THE CONTRACTOR IS RESPONSIBLE FOR DETERMINING THE ACCURACY OF THIS INFORMATION.
  4. CONTRACTOR SHALL INSTALL EROSION CONTROL MEASURES DEPICTED ON THIS DRAWING AS SOON AS PRACTICAL AND MAINTAIN UNTIL PROJECT COMPLETION. ADDITIONAL EROSION CONTROL MEASURES MAY BE REQUIRED BY SITE CONDITIONS OR GOVERNING AUTHORITIES.
  5. CONTRACTOR SHALL SPREAD 4" TOPSOIL ON ALL DISTURBED AREAS NOT TO RECEIVE PAVEMENT OR BUILDING. SEE LANDSCAPE PLAN FOR LANDSCAPE INFORMATION.
  6. APPLY TEMPORARY SEEDING WHENEVER GRADING OPERATIONS ARE TEMPORARILY HALTED FOR OVER 14 DAYS AND FINAL GRADING OF EXPOSED SURFACES IS TO BE COMPLETED WITHIN ONE YEAR. APPLY TEMPORARY SEEDING TO SOIL STOCKPILES.
  7. APPLY PERMANENT SEEDING WHENEVER GRADING OPERATIONS ARE COMPLETED AND ALL CONSTRUCTION OPERATIONS WILL NOT IMPACT THE DISTURBED AREA. APPLY PERMANENT SEEDING TO ALL NON-CONSTRUCTION AREAS, WHICH SHOW SIGNS OF EXCESSIVE EROSION.



**GEORGE ARMOUR ARCHITECT**  
**GEORGE E WART**  
 404 BEARDEN PARK CIRCLE  
 KNOXVILLE, TN 37919  
 Voice: 865-602-7771  
 Fax: 865-602-7742  
 Web Site: www.georgewart.com

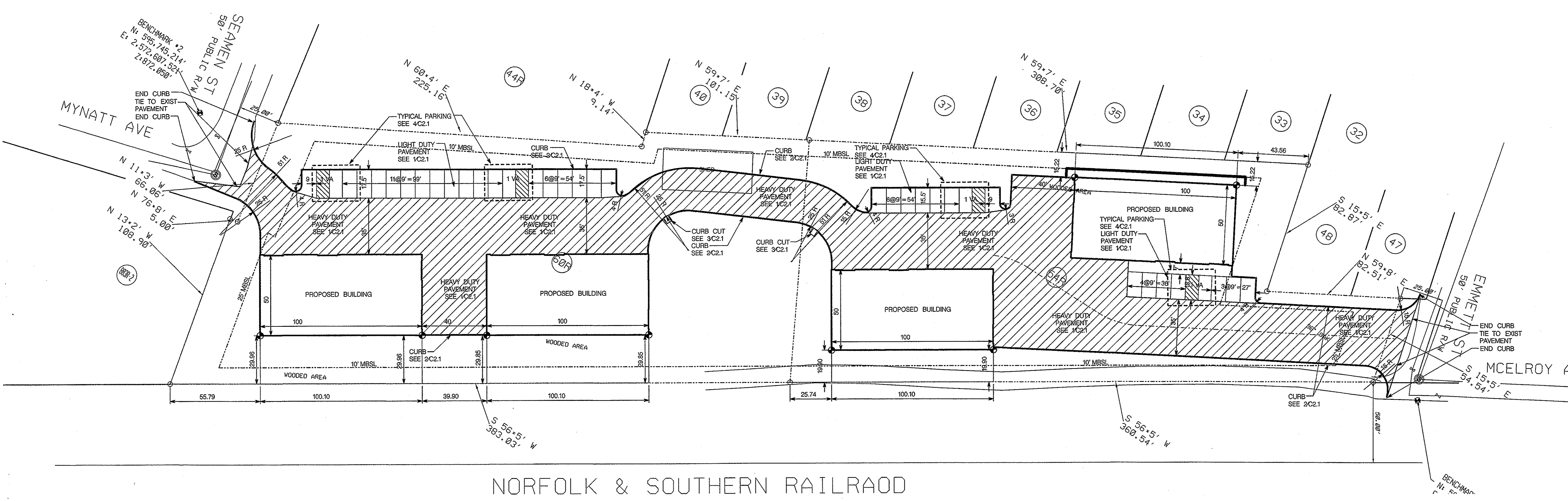
NEW BUILDINGS FOR  
**SOUTHERN BUILT**  
 KNOXVILLE, TENNESSEE



SITE LAYOUT PLAN

DATE: 24 DEC 2007  
 PROJECT NO.: 06110  
 PROJECT MGR.: SARAH

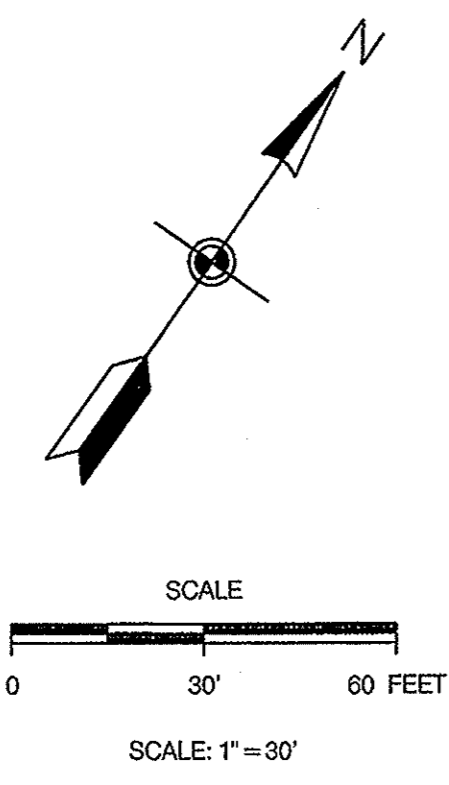
C1.1



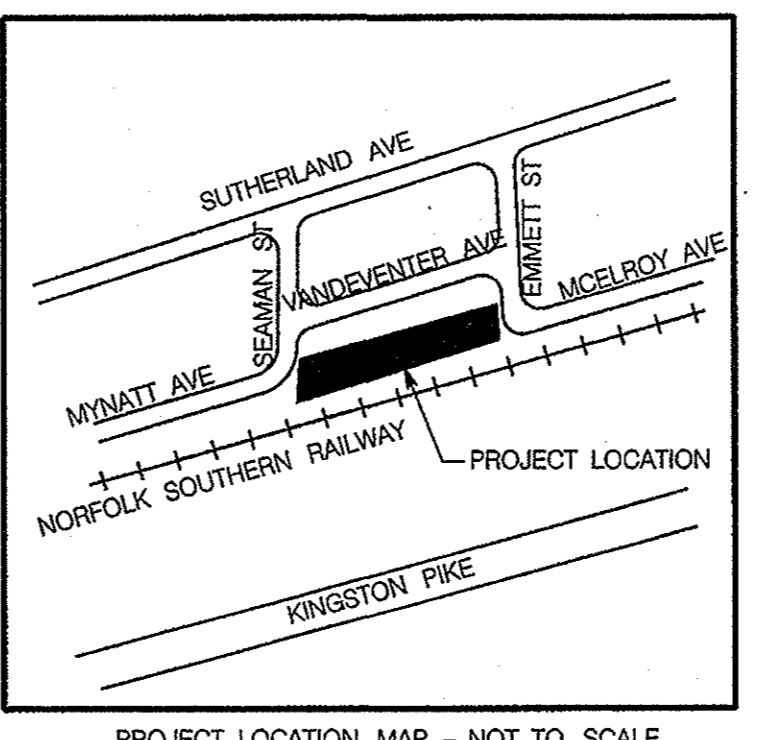
NORFOLK & SOUTHERN RAILROAD

**LEGEND:**

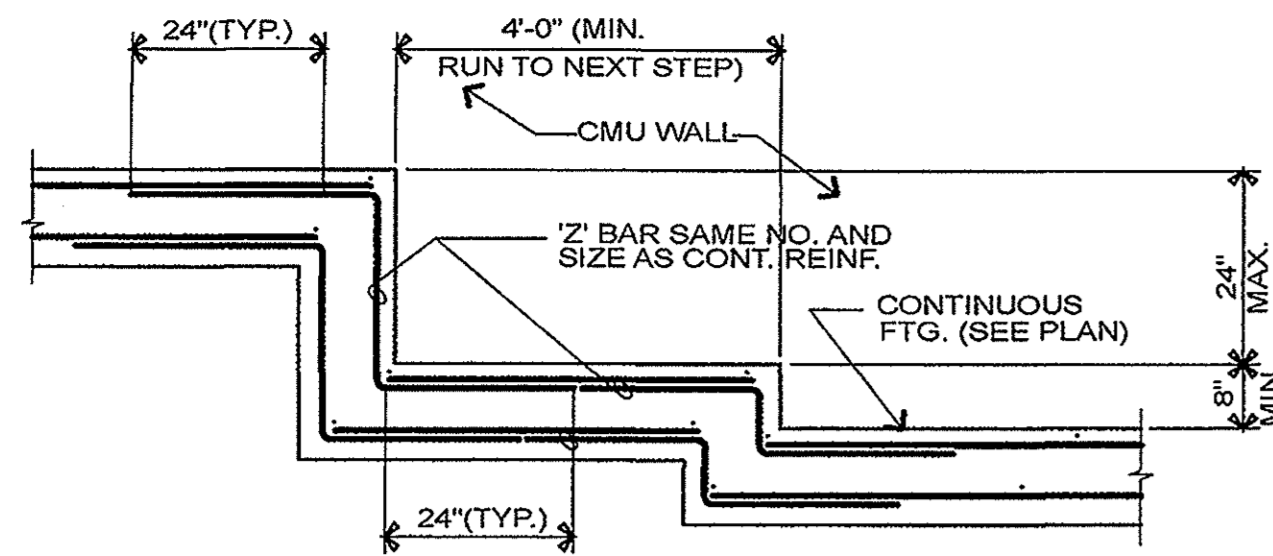
EXISTING	PROPOSED	
--- 53s ---	— 53s —	GROUND CONTOUR ELEVATION
53s.25'	53s.25'	SPOT ELEVATION
[Rectangle]	[Rectangle]	STRUCTURE
○	NA	PROPERTY LINE
---	---	EASEMENT
---	---	EDGE OF PAVEMENT
— SD —	— SD —	STORM DRAIN
— SS —	— SS —	SANITARY SEWER
— FW —	— FW —	POTABLE WATER
— NG —	— NG —	NATURAL GAS
— UE —	— UE —	UNDERGROUND ELECTRICAL
○	●	MANHOLE
○	⊙	WATER METER
○	NA	FIRE HYDRANT
☼	→	SURFACE FLOW
NA	— S — X —	SILT FENCING
NA	[Haybale symbol]	STAKED HAYBALES
NA	[Curb symbol]	CURB
NA	[Concrete texture]	CONCRETE PAVEMENT
NA	[Asphalt texture]	ASPHALT PAVEMENT
NA	[Rip rap texture]	RIP RAP



<b>OWNER:</b> KNOXVILLE, TN PHONE: 865- FAX: CONTACT:	<b>ENGINEER:</b> WILL ROBINSON & ASSOCIATES 131 BRENTWOOD DR OAK RIDGE, TN 37830 PHONE: 423-7918 FAX: 877-663-2233 CONTACT: WILL ROBINSON	<b>CONTRACTOR:</b> TO BE DETERMINED
---	---	--

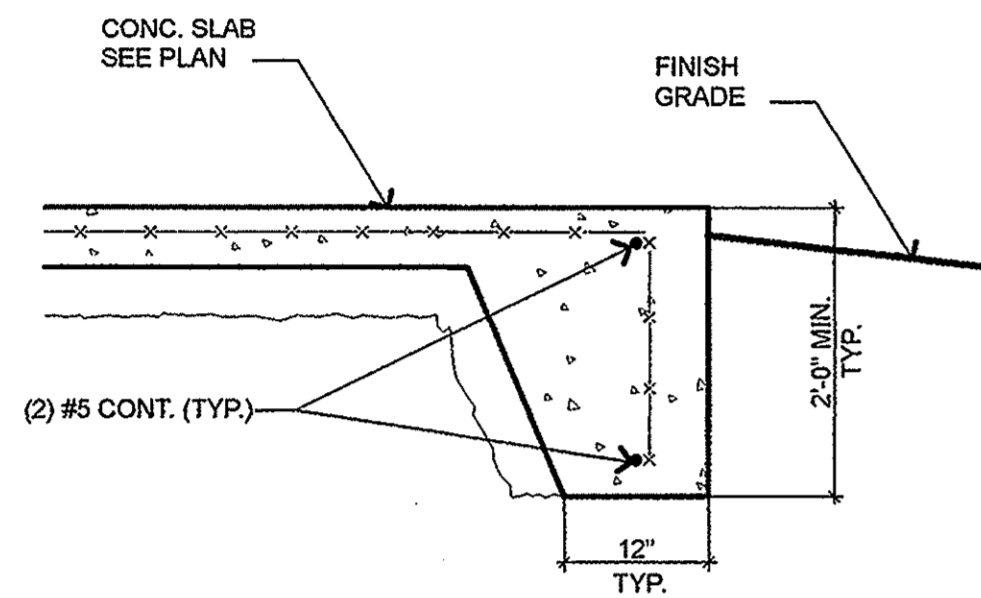


- NOTES:**
- OWNER: SOUTHERN BUILT
  - USE: INDUSTRIAL BUILDINGS
  - CLT: MAP 108AG040, 108AG045
  - ZONING: I-2
  - WARD 24 BLOCK 24060.
  - DEED REFERENCE: 20060328-0080454
  - TOTAL BUILDING AREA: 5,000 SF, 4 BUILDINGS, 1 STORY EACH.
  - TOTAL SITE AREA: 2.33 ACRES, TOTAL DISTURBED AREA 2.15 ACRES.
  - THIS PROPERTY IS NOT IN AN AREA DESIGNATED AS A SPECIAL FLOOD HAZARD AREA. SITE BENCHMARK: CONTACT SURVEYOR FOR SITE BENCHMARK. DATUM NAVD 88.
  - SITE BOUNDARY AND TOPOGRAPHIC INFORMATION IS BASED ON A SURVEY PROVIDED BY THE OWNER. THE CONTRACTOR SHALL VERIFY CONDITIONS AND INFORM THE ARCHITECT OF ANY DISCREPANCIES. THE ARCHITECT AND THE ENGINEER ACCEPT NO RESPONSIBILITY FOR THE ACCURACY AND/OR COMPLETENESS OF EXISTING CONDITIONS INFORMATION PROVIDED BY OTHERS.
  - UTILITY INFORMATION IS BASED ON INFORMATION OBTAINED FROM THE UTILITY PROVIDERS. THE CONTRACTOR IS RESPONSIBLE FOR DETERMINING THE ACCURACY OF THIS INFORMATION.
  - PARKING SUMMARY:  
PARKING PROVIDED: 36 SPACES  
PARKING REQUIRED: 25 SPACES  
BASIS: 1 PER 2 EMPLOYEES ON THE TWO LARGEST CONSECUTIVE SHIFTS
  - SETBACKS:  
FRONT: 25'  
SIDE: 10'  
REAR: 10'



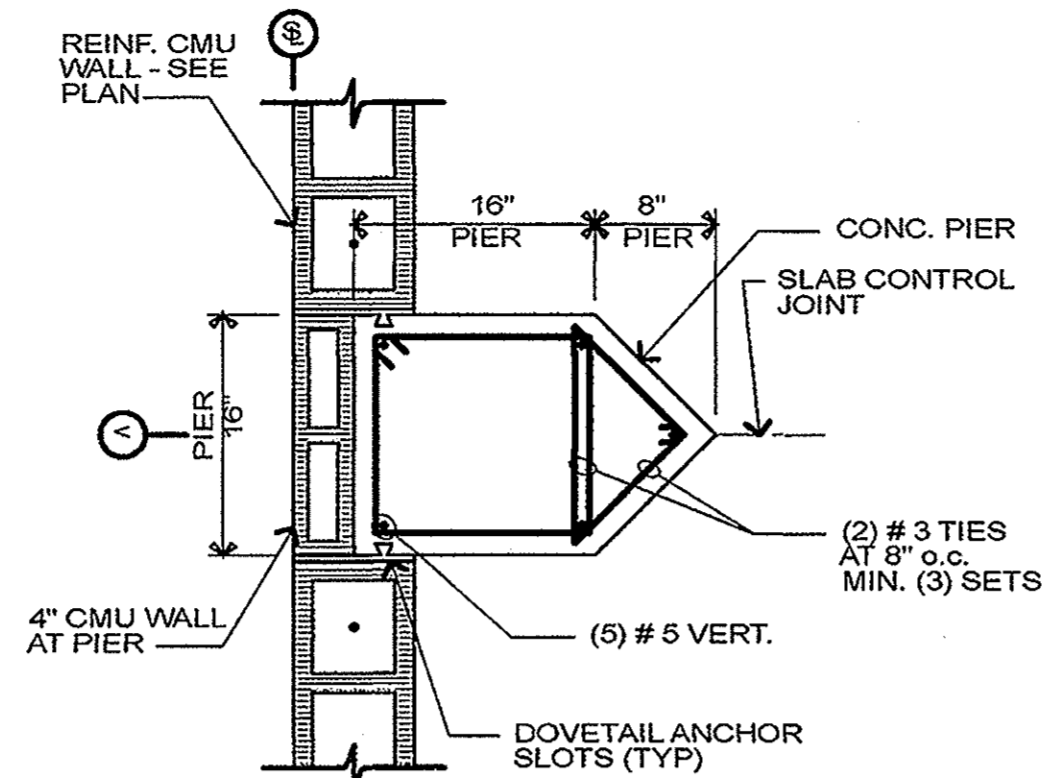
**4 FOOTING STEP DETAIL**

SCALE: 1/2" = 1'-0"

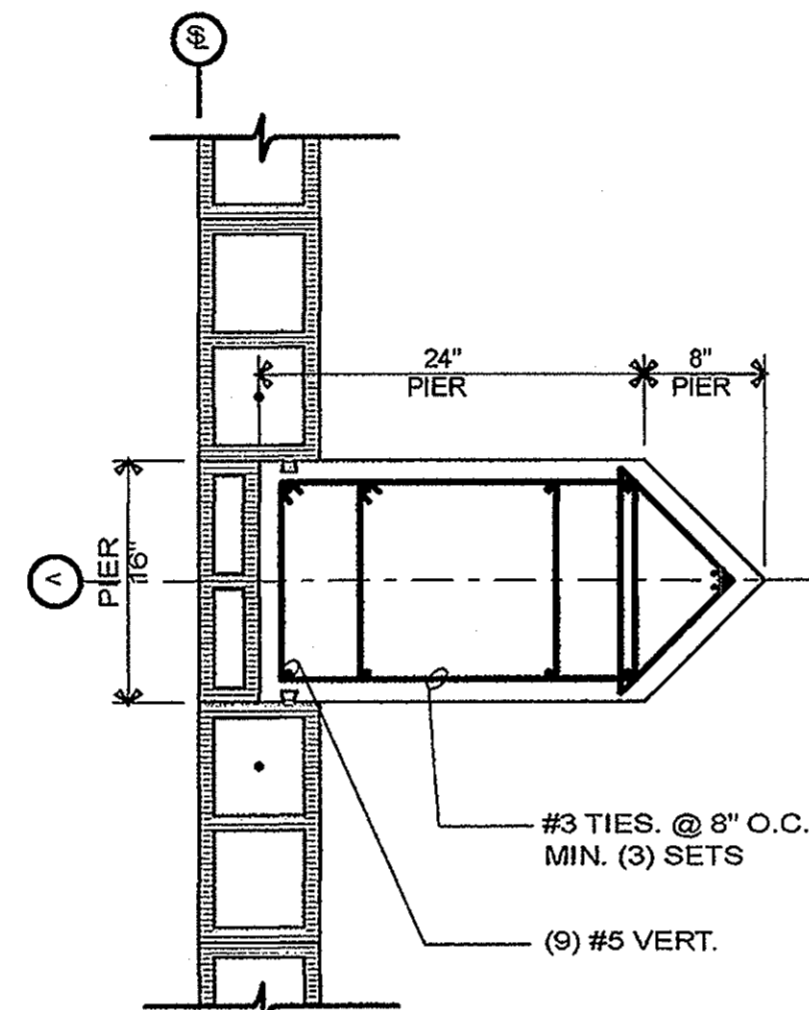


**5 SECT. @ TURN DN. SLAB**

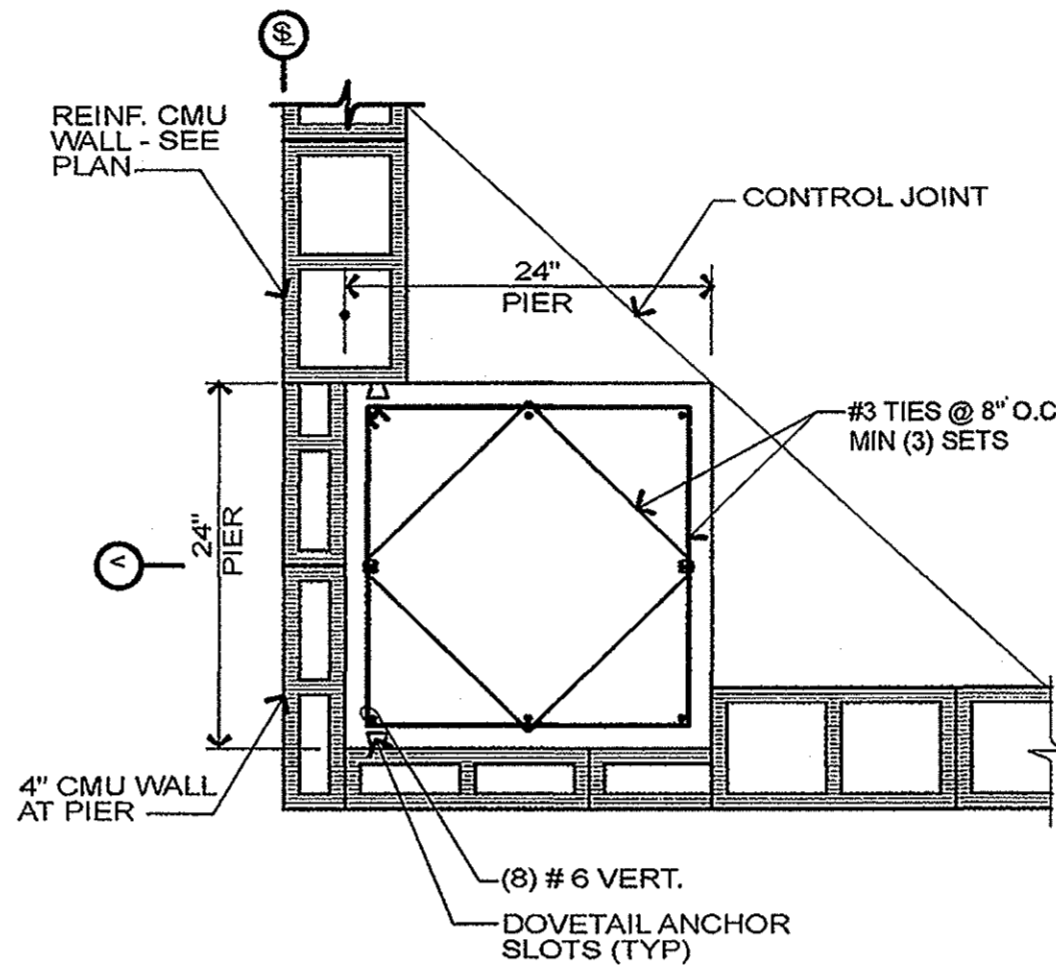
SCALE: 3/4" = 1'-0"



**CONC. PIER TYPE #1**



**CONC. PIER TYPE #2**



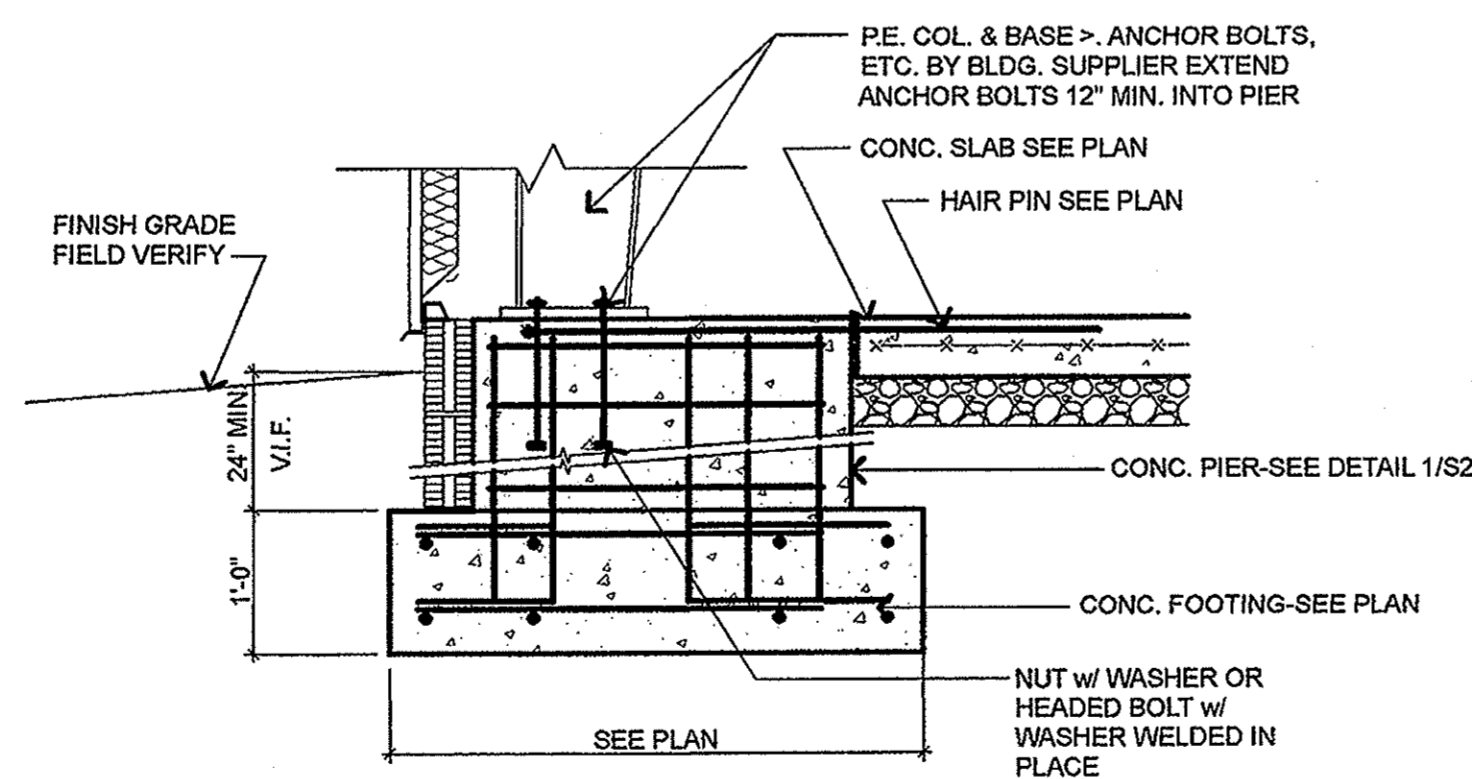
**CONC. PIER TYPE #3**

**NOTES:**

- PROVIDE DOVETAIL SLOTS AT ALL CONCRETE PIERS ADJACENT TO MASONRY. PROVIDE DOVETAIL ANCHORS AT EACH COURSE. (TYP.)
- WALL REINFORCING NOT SHOWN - COORDINATE W/ PLAN
- MIN. OF (3) SETS OF TIES / TIE BARS
- COORDINATE ORIENTATION OF PIERS W/ PLAN
- CENTER FOOTINGS UNDER PIER
- REINFORCE CELL ADJACENT TO PIER

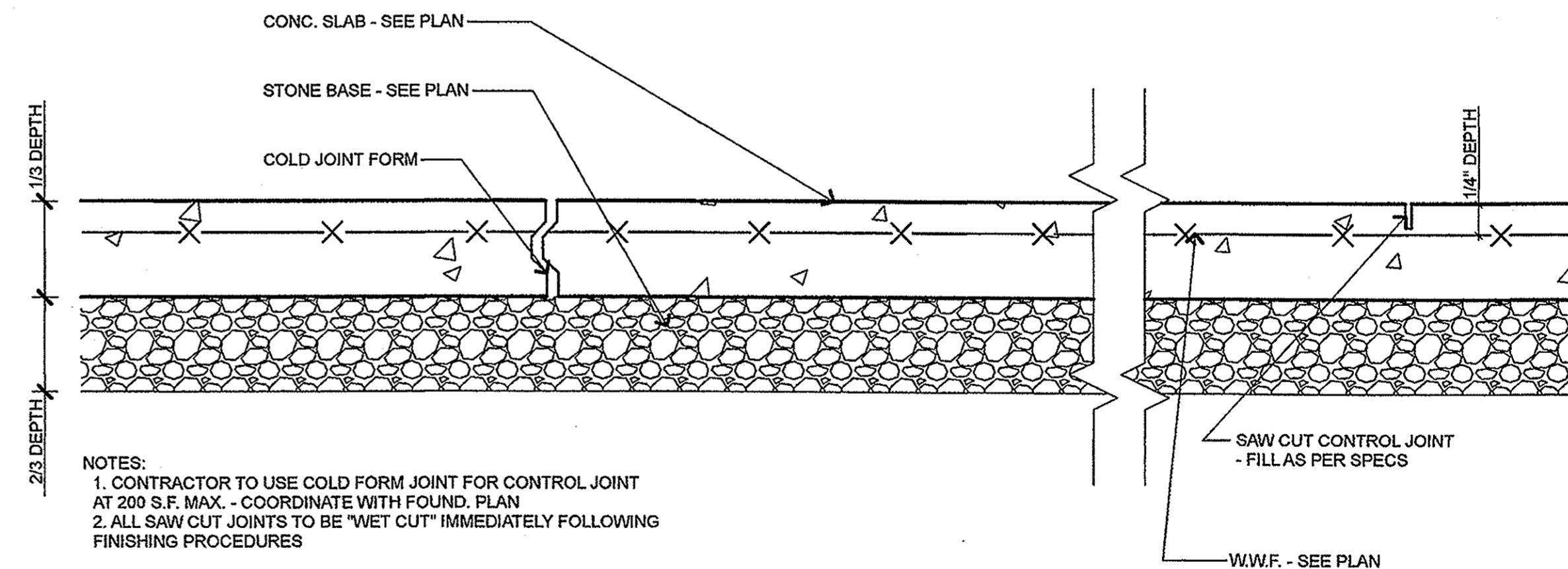
**1 PLAN DETAIL CONC. PIER**

SCALE: 1" = 1'-0"



**3 CONC. PIER DETAIL**

SCALE: 3/4" = 1'-0"



- NOTES:**
1. CONTRACTOR TO USE COLD FORM JOINT FOR CONTROL JOINT AT 200 S.F. MAX. - COORDINATE WITH FOUND. PLAN
  2. ALL SAW CUT JOINTS TO BE "WET CUT" IMMEDIATELY FOLLOWING FINISHING PROCEDURES

**2 CONTROL JOINT DETAIL**

SCALE: 1 1/2" = 1'-0"

**GENERAL NOTES:**

1. The general contractor shall verify all dimensions and site conditions before starting work. The Architect shall be notified of any discrepancy.
2. The intent of these drawings is that all material and workmanship shall conform to International Building Code, ACI, AISC, AWS, and all other applicable codes governing work indicated on drawings, latest adopted edition.
3. The design adequacy and safety of erection bracing, shoring, etc., is the sole responsibility of the Contractor. (Walls which support joists, rafters, etc., and are laterally supported by same shall be braced until all construction is completed.)
4. The general contractor shall coordinate the placement of footings, columns, slabs, walls, shafts, etc., with all subcontractors involved.
5. Contractor to coordinate top of footing elevation with plumbing, mechanical, electrical, site conditions, etc.
6. The intent of these drawings is to be part of a "Design-Build" project. Although engineer has attempted to show all construction, engineer and contractor are to coordinate any areas not noted on structural drawings. Any additional information required will be provided during construction.

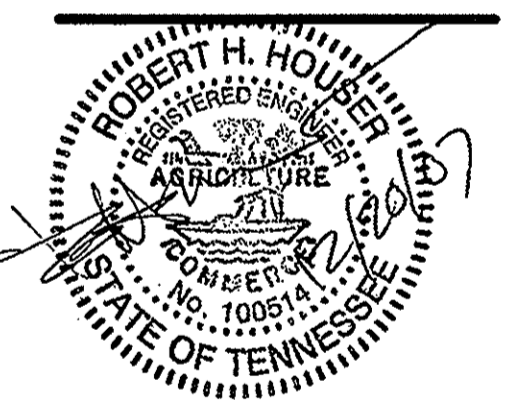
**CONCRETE, MASONRY, & RELATED NOTES**

1. Concrete strength to be  $f_c=3000$  psi @ 28 days.
2. Concrete exposed to weather to be air-entrained (6% max.-3% min.).
3. Concrete and reinforcing steel to be as per ACI 318 and ACI 301.
  - Sampling and testing of concrete to be in accordance with ACI 301.
  - Contractor to take special precautions for hot and cold weather concreting as indicated in ACI 301.
4. Reinforcing steel to be A 615-60.
5. Provide shop drawings of reinforcing steel prior to fabrication of same.
  - Refer to specifications for submittal process.
6. Footings are designed for a minimum soil bearing capacity of 2,500 psf.
  - Architect to be contacted if poor soil conditions are encountered. Contractor to verify soil bearing value with geotechnical engineer prior to construction.
7. The following minimum concrete cover shall be provided for reinforcement:
  - a. Concrete cast against and permanently exposed to earth.....3"
  - b. Concrete exposed to earth or weather:
    - #6 through #10 bars.....2"
    - #5 bar and smaller.....1-1/2"
8. The following reinforcement to be provided unless noted or detailed otherwise:
  - a. Provide 2'-6" x 2'-6" corner bars in corners of all footings, reinforced walls, bond beams, etc. Provide same bar size and number or spacing as continuous horizontal reinforcement
  - b. Provide "Z" bars in all footing steps-see 8/A2
9. Step footings as required by soft soil, plumbing, etc.
10. All concrete slabs on grade to be 4" thick with 6 x 6 w1.4 - w1.4 w.w.f. on 4" crushed stone, unless noted otherwise. Excavate slope and provide crushed stone backfill as directed by geotechnical engineer.
11. Provide minimum 2'-6" crushed stone backfill behind all walls which retain fill, unless noted otherwise.
12. Unless noted or detailed otherwise, all reinforcing steel to be lapped a minimum of a class B tension splice
13. Provide a control joint in all concrete slabs on grade at 150 sq./ft., unless noted otherwise.
14. Provide 1/2" expansion joint material at areas where slab on grade is adjacent to walls.
15. All precast concrete lintels to be designed by supplier. Minimum size to be 8" x 8" (nominal) with a minimum of (2) #5 continuous top and bottom. (Provide min. of 16" bearing each end).



**GEORGE ARMOUR EWART**  
 ARCHITECT  
 404 Bearden Park Circle  
 Knoxville, TN 37919  
 Phone 865.602.7771  
 Fax 865.602.7742  
 Web: www.georgeewart.com

A NEW BUILDING FOR:  
**SOUTHERN BUILT**  
 TENNESSEE  
 KNOXVILLE,



FOUNDATION DETAILS & NOTES

DATE: 21 DECEMBER 2007  
 PROJECT NO.: 0793  
 PROJECT MGR.: GAE

**S2**