

**SURVEYOR'S NOTES:**

1. UV and IR were used in the field and all bearings are correct.
2. Bearings, angles and distances were measured and reduced to mean sea level on each side of all bearings. All bearings are true bearings and all distances are true distances.
3. The bearings and distances were measured and reduced to mean sea level on each side of all bearings. All bearings are true bearings and all distances are true distances.
4. The bearings and distances were measured and reduced to mean sea level on each side of all bearings. All bearings are true bearings and all distances are true distances.
5. The bearings and distances were measured and reduced to mean sea level on each side of all bearings. All bearings are true bearings and all distances are true distances.
6. The bearings and distances were measured and reduced to mean sea level on each side of all bearings. All bearings are true bearings and all distances are true distances.
7. The bearings and distances were measured and reduced to mean sea level on each side of all bearings. All bearings are true bearings and all distances are true distances.
8. The bearings and distances were measured and reduced to mean sea level on each side of all bearings. All bearings are true bearings and all distances are true distances.
9. The bearings and distances were measured and reduced to mean sea level on each side of all bearings. All bearings are true bearings and all distances are true distances.
10. The bearings and distances were measured and reduced to mean sea level on each side of all bearings. All bearings are true bearings and all distances are true distances.

11. The bearings and distances were measured and reduced to mean sea level on each side of all bearings. All bearings are true bearings and all distances are true distances.

12. The bearings and distances were measured and reduced to mean sea level on each side of all bearings. All bearings are true bearings and all distances are true distances.

13. The bearings and distances were measured and reduced to mean sea level on each side of all bearings. All bearings are true bearings and all distances are true distances.

14. The bearings and distances were measured and reduced to mean sea level on each side of all bearings. All bearings are true bearings and all distances are true distances.

15. The bearings and distances were measured and reduced to mean sea level on each side of all bearings. All bearings are true bearings and all distances are true distances.

16. The bearings and distances were measured and reduced to mean sea level on each side of all bearings. All bearings are true bearings and all distances are true distances.

17. The bearings and distances were measured and reduced to mean sea level on each side of all bearings. All bearings are true bearings and all distances are true distances.

18. The bearings and distances were measured and reduced to mean sea level on each side of all bearings. All bearings are true bearings and all distances are true distances.

19. The bearings and distances were measured and reduced to mean sea level on each side of all bearings. All bearings are true bearings and all distances are true distances.

20. The bearings and distances were measured and reduced to mean sea level on each side of all bearings. All bearings are true bearings and all distances are true distances.

21. The bearings and distances were measured and reduced to mean sea level on each side of all bearings. All bearings are true bearings and all distances are true distances.

22. The bearings and distances were measured and reduced to mean sea level on each side of all bearings. All bearings are true bearings and all distances are true distances.

23. The bearings and distances were measured and reduced to mean sea level on each side of all bearings. All bearings are true bearings and all distances are true distances.

24. The bearings and distances were measured and reduced to mean sea level on each side of all bearings. All bearings are true bearings and all distances are true distances.

25. The bearings and distances were measured and reduced to mean sea level on each side of all bearings. All bearings are true bearings and all distances are true distances.

26. The bearings and distances were measured and reduced to mean sea level on each side of all bearings. All bearings are true bearings and all distances are true distances.

27. The bearings and distances were measured and reduced to mean sea level on each side of all bearings. All bearings are true bearings and all distances are true distances.

28. The bearings and distances were measured and reduced to mean sea level on each side of all bearings. All bearings are true bearings and all distances are true distances.

29. The bearings and distances were measured and reduced to mean sea level on each side of all bearings. All bearings are true bearings and all distances are true distances.

30. The bearings and distances were measured and reduced to mean sea level on each side of all bearings. All bearings are true bearings and all distances are true distances.

31. The bearings and distances were measured and reduced to mean sea level on each side of all bearings. All bearings are true bearings and all distances are true distances.

32. The bearings and distances were measured and reduced to mean sea level on each side of all bearings. All bearings are true bearings and all distances are true distances.

33. The bearings and distances were measured and reduced to mean sea level on each side of all bearings. All bearings are true bearings and all distances are true distances.

34. The bearings and distances were measured and reduced to mean sea level on each side of all bearings. All bearings are true bearings and all distances are true distances.

35. The bearings and distances were measured and reduced to mean sea level on each side of all bearings. All bearings are true bearings and all distances are true distances.

36. The bearings and distances were measured and reduced to mean sea level on each side of all bearings. All bearings are true bearings and all distances are true distances.

37. The bearings and distances were measured and reduced to mean sea level on each side of all bearings. All bearings are true bearings and all distances are true distances.

38. The bearings and distances were measured and reduced to mean sea level on each side of all bearings. All bearings are true bearings and all distances are true distances.

39. The bearings and distances were measured and reduced to mean sea level on each side of all bearings. All bearings are true bearings and all distances are true distances.

40. The bearings and distances were measured and reduced to mean sea level on each side of all bearings. All bearings are true bearings and all distances are true distances.

41. The bearings and distances were measured and reduced to mean sea level on each side of all bearings. All bearings are true bearings and all distances are true distances.

42. The bearings and distances were measured and reduced to mean sea level on each side of all bearings. All bearings are true bearings and all distances are true distances.

43. The bearings and distances were measured and reduced to mean sea level on each side of all bearings. All bearings are true bearings and all distances are true distances.

44. The bearings and distances were measured and reduced to mean sea level on each side of all bearings. All bearings are true bearings and all distances are true distances.

45. The bearings and distances were measured and reduced to mean sea level on each side of all bearings. All bearings are true bearings and all distances are true distances.

46. The bearings and distances were measured and reduced to mean sea level on each side of all bearings. All bearings are true bearings and all distances are true distances.

47. The bearings and distances were measured and reduced to mean sea level on each side of all bearings. All bearings are true bearings and all distances are true distances.

48. The bearings and distances were measured and reduced to mean sea level on each side of all bearings. All bearings are true bearings and all distances are true distances.

49. The bearings and distances were measured and reduced to mean sea level on each side of all bearings. All bearings are true bearings and all distances are true distances.

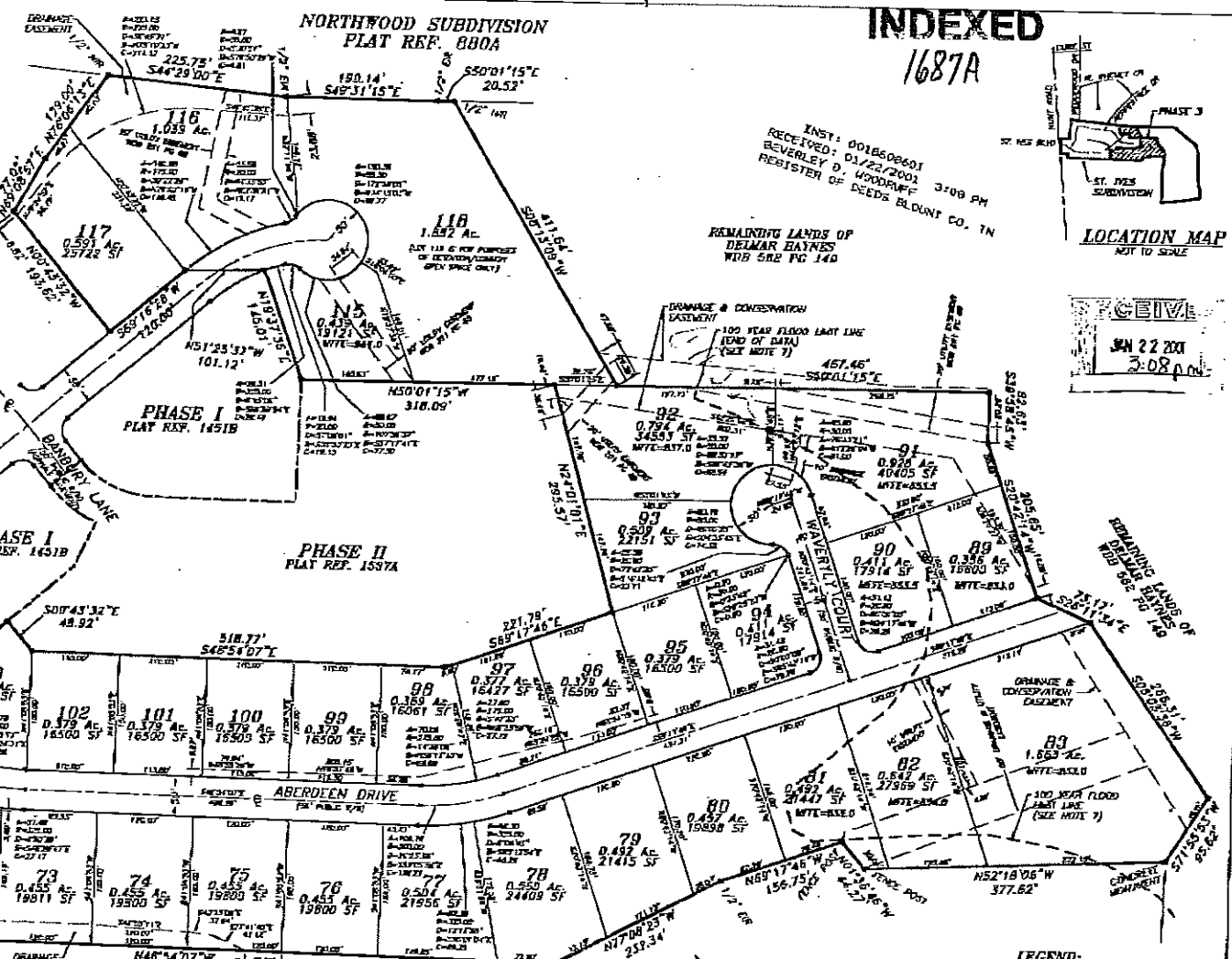
50. The bearings and distances were measured and reduced to mean sea level on each side of all bearings. All bearings are true bearings and all distances are true distances.

51. The bearings and distances were measured and reduced to mean sea level on each side of all bearings. All bearings are true bearings and all distances are true distances.

52. The bearings and distances were measured and reduced to mean sea level on each side of all bearings. All bearings are true bearings and all distances are true distances.

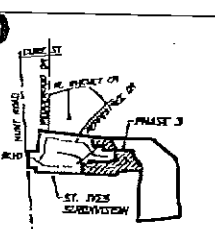
53. The bearings and distances were measured and reduced to mean sea level on each side of all bearings. All bearings are true bearings and all distances are true distances.

54. The bearings and distances were measured and reduced to mean sea level on each side of all bearings. All bearings are true bearings and all distances are true distances.



**INDEXED**  
1687A

INST: 0018602601  
RECEIVED: 01/22/2001 3:08 PM  
REGISTER OF DEEDS BLOUNT CO., TN



LOCATION MAP  
NOT TO SCALE

DATE: JAN 22 2001  
TIME: 3:08 PM

REMAINING LANDS OF  
DELMAR HAYNES  
WDB 582 PG 140

FINAL PLAT  
LOTS 71-83, 89, 103, 115-118

**ST. IVES  
PHASE 3**  
DELMAR HAYNES

ALCOA, TN

**CERTIFICATE OF APPROVAL FOR RECORDING**  
I hereby certify that the subdivision plat herein has been found to comply with the applicable requirements for the filing of such plat with the Register of Deeds, and that the same is a true and correct copy of the original as filed with the Register of Deeds.

**CERTIFICATE OF OWNERSHIP AND DEDICATION**  
I hereby certify that I am the owner of the property shown and described herein and that I have dedicated the same to the public use of the City of Alcoa, Tennessee, and that the same is a true and correct copy of the original as filed with the Register of Deeds.

**CERTIFICATE OF THE APPROVAL OF WATER AND SANITARY SEWER UTILITIES**  
I hereby certify that the water and sanitary sewer improvements shown on this plat are in accordance with the applicable requirements of the City of Alcoa, Tennessee, and that the same are a true and correct copy of the original as filed with the Register of Deeds.

**CERTIFICATE OF THE APPROVAL OF ROAD NAMES AND PROPERTY NUMBERS (E-911)**  
I hereby certify that the proposed road names and property numbers shown on this plat are in accordance with the applicable requirements of the City of Alcoa, Tennessee, and that the same are a true and correct copy of the original as filed with the Register of Deeds.

**CERTIFICATE OF THE APPROVAL OF ELECTRIC UTILITIES**  
I hereby certify that the electric utility improvements shown on this plat are in accordance with the applicable requirements of the City of Alcoa, Tennessee, and that the same are a true and correct copy of the original as filed with the Register of Deeds.

**CERTIFICATE OF ACCURACY**  
I hereby certify that the above stated and described herein is a true and correct copy of the original as filed with the Register of Deeds, and that the same is a true and correct copy of the original as filed with the Register of Deeds.

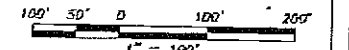
**CERTIFICATE OF THE APPROVAL OF STREETS**  
I hereby certify that the streets shown and described herein are in accordance with the applicable requirements of the City of Alcoa, Tennessee, and that the same are a true and correct copy of the original as filed with the Register of Deeds.

**CERTIFICATE OF APPROVAL OF ROAD NAMES AND PROPERTY NUMBERS (E-911)**  
I hereby certify that the proposed road names and property numbers shown on this plat are in accordance with the applicable requirements of the City of Alcoa, Tennessee, and that the same are a true and correct copy of the original as filed with the Register of Deeds.

**CERTIFICATE OF THE APPROVAL OF ELECTRIC UTILITIES**  
I hereby certify that the electric utility improvements shown on this plat are in accordance with the applicable requirements of the City of Alcoa, Tennessee, and that the same are a true and correct copy of the original as filed with the Register of Deeds.

**OWNER:**  
DELMAR HAYNES  
P.O. BOX 548  
ALCOA, TN 37701  
(423) 970-3000  
31 LOTS - TOTAL ACRES = 121.170 AC.  
1 DETENTION LOT 1.882 AC.  
WDB 582 PAGE 149  
TAX MAP 36, PARCEL 25  
BLOUNT COUNTY - TENNESSEE  
DISTRICT 9, CITY OF ALCOA

- LEGEND:**
- DN EXISTING FROM ROAD
  - DP EXISTING FROM PIPE
  - FR NEW FROM ROAD
  - A= ARC LENGTH
  - R= RADIUS
  - D= CENTRAL ANGLE (DEGREES)
  - B= CHORD BEARING
  - C= CHORD LENGTH
  - Ac ACRES
  - SF SQUARE FEET
  - MBE MANSUETI LEVEL BOUND
  - FB FACE
  - TV TYPICAL
  - R/W RIGHT-OF-WAY
  - MTFE MINIMUM FINISH FLOOR ELEVATION
  - C CENTERLINE
  - E BOUNDARY LINE
  - PHASE LINE
  - RD ROAD RIGHT OF WAY LINE
  - CD CENTERLINE
  - LOT LINE
  - SEWAGE LINE
  - 100 YEAR FLOOD LIMIT LINE



SHEET  
**1 OF 1**  
DESIGNED: ARH  
CHECKED:  
DATE: 11/27/00  
SCALE: 1" = 100'  
DRAWING: 3053-3FS1  
PROJECT NO: SEI#3053