

Great Smoky Mountain Fall Auction

Construction • Trucks • Trailers • Farm • Support Equipment
Chilhowee Park & Exposition Center, Knoxville, TN

Selling items for Genesis Excavating, Liquidation of Moving Company Trucks, Banks, Lending Institutions & Others

Saturday, November 14 • 9:30 AM

Inspection: Friday, November 13 • 8:30 AM - 5:00 PM

Preliminary Notice
HUGE CONSTRUCTION
AUCTION

Liquidation of Andrews Excavation

McDonough, GA

December 4

Visit www.furrow.com for details.

This brochure is intended as a guide. If you are interested in a specific piece, please call. All information from sources assumed to be correct, but is not guaranteed by Furrow Auction Co. All announcements made day of sale supercede any printed material.



Case 1085C Cruz-Air

TERMS: 10% Buyer's Premium on all items \$2,500 or less. 5% Buyers Premium on all items \$2,501 or more. Additional 2% for on-line buyers. Cash, Cashier's Check, Company or Personal Check when accompanied by a Bank Letter of Guaranty. Payment due day of sale.

Live Online Bidding Powered By: **proxibid**

DIRECTIONS: In Knoxville, take exit 392 Rutledge Pike/11W off I-40. Take 11W to Timothy Avenue. Travel 3/10 mile to sale site on left, at corner of Timothy Ave. and Prosser Rd.

Great Smoky Mountain Fall Auction

Construction • Trucks • Trailers • Farm • Support Equipment
Chilhowee Park & Exposition Center, Knoxville, TN

Selling items for Genesis Excavating, Liquidation of Moving Company Trucks, Banks, Lending Institutions & Others

Saturday, November 14 • 9:30 AM

Inspection: Friday, November 13 • 8:30 AM - 5:00 PM



Cat 815B Landfill Compactor



Dresser 850 Motor Grader

On-line bidding at
www.Furrow.com



1950 Chevy Pickup



2002 Toyota 12,000 lb. Load Lifter

• Construction • Trucks • Trailers
• Farm • Support Equipment
 Chilhowee Park & Exposition Center, Knoxville, TN
Saturday, November 14 • 9:30 AM
 Inspection: Friday, November 13 • 8:30 AM - 5 PM



Great Smoky Mountain Auction



TN Lic. #62 • EQ091114
 www.furrow.com
 (865) 546-3206 • 1-800-4FURROW
 Knoxville, TN 37921

FURROW
AUCTION
COMPANY
 1022 Elm Street
 Knoxville, TN 37921



Pass It On...if you have friends who might be interested in this auction, we would appreciate your sharing this information with them.

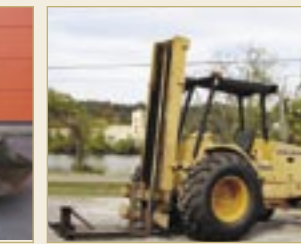
PRESORTED
 U.S. POSTAGE
PAID
 PERMIT NO. 658
 KNOXVILLE, TN

Sale Site Phone: (865) 310-3206

FURROW AUCTION COMPANY

(865) 546-3206 • 1-800-4FURROW • www.furrow.com • TN Lic. #62





25+ Van Trailers



2004



Great Smoky Mountain Fall Auction

Chilhowee Park & Exposition Center, Knoxville, TN

Saturday, November 14 • 9:30 AM
 Inspection: Friday, November 13 • 8:30 AM - 5:00 PM

Live Online Bidding Powered By: proxibid

ANTIQUE TRUCK, CADILLAC ESCALADE ELECTRIC CART & ALL TERRAIN SUBURBAN

- Antique 1950 Chevrolet 4-Speed in Floor, 327 Camaro V-8 Engine, Corvette Rear End, Bowling Alley 5 Window Cab
- 2007 ACG Escalade LSV (Electric Low Speed Vehicle) 4-seats w/belts, stereo, 18" chrome wheels, lights & flashers
- Hunters Special! Chevy Suburban, Auto, Air, 3rd Row Seating, All-terrain Tires 4X4

CRAWLER DOZERS & WHEEL LOADER

- Cat D6H Series II Crawler Dozer, s/n 32F04064
- Cat D3C Series II Crawler Dozer, LGP, 6-way, 5834 hrs, s/n 5CJ00228
- Cat D3GXL Crawler/Dozer, 6-way, ROPS, Rear Screen, Riser, Hy-Stat, 3023 hrs., sn.5xk35396
- Cat 950F Series II Wheel Loader w/cab, forks, bucket s/n 8TK02201
- Fiat Allis FD-20 Crawler Dozer w/straight blade, s/n 9638
- New Holland DC-100 Crawler/Dozer, 6-way, ORPS, 1506hrs., s/n 13111200
- 1981 Massey Ferguson M-55 Wheel Loader w/ 10' Forks
- 1999 Hamm 3012 Padfoot Roller, 66"
- Fiat Allis FR-10B Wheel Loader, cab w/root rake, 6' forks

HYDRAULIC & MINI EXCAVATORS

- Cat 330L Hydraulic Excavator w/thumb, s/n 8FK00129
- 2002 Komatsu PC 138 Hydraulic Excavator w/thumb, 3385 hrs, s/n 1574
- John Deere 690 A Hydraulic Excavator w/ Thumb, EROPS, s/n 001984T
- Case 1085C Cruz Air Wheeled Excavator, (2) buckets s/n JAK0032405
- 2001 Case CX 47 Mini Excavator, 2013 hrs
- 2003 Volvo MC 70 Mini Excavator, 889 hrs
- 2002 Bobcat 442 Mini Excavator 1375 hrs
- 2000 Bobcat 341 Mini Excavator, s/n 38326

MOTOR GRADER, COMPACTORS, BRUSH CHIPPER & GRAVEL BOX

- Dresser 850 Motor Grader, s/n G58000102119
- Cat 815B Landfill Compactor, s/n15Z00631
- Case W1102 D Vibratory Compactor, smooth drum, s/n V37388
- Vermeer 1250 Chipper, s/n 1VRC14133P1003702
- GME 4 yard Rock Box

RUBBER TRACK LOADERS, SKID STEER LOADERS & LOADER BACKHOES

- 2005 Cat 267B Rubber Track Loader w/bucket & enclosed cab 2132 hrs, s/n CYC00934
- 2002 Cat 247 Rubber Track Loader w/bucket & enclosed cab, 2103 hrs
- 2005 T-300 Rubber Track Loader w/bucket, enclosed cab/air 2092hrs
- 2003 T-300 Rubber Track Loader w/bucket, 2309 hrs
- 2006 T-140 Rubber Track Loader w/bucket, 791 hrs
- 2004 T-190 Rubber Track Loader w/bucket, 1832 hrs
- 2001 T-190 Rubber Track Loader w/bucket, 1980 hrs
- 2005 Bobcat S-250 Skid Steer Loader w/bucket, 4573 hrs.
- 2002 Cat 216 Skid Steer Loader w/bucket
- 2001 Bobcat 873 Skid Steer Loader w/bucket, 4162 hrs
- 1997 Bobcat 863 Skid Steer Loader w/bucket, 2560 hrs
- 1999 Bobcat 963 Skid Steer Loader w/bucket 2956 hrs
- 1998 Bobcat 753 Skid Steer Loader w/bucket 2453 hrs
- 2001 Bobcat 753 Skid Steer Loader w/bucket, 1166 hrs
- 2002 Bobcat 763 Skid Steer Loader w/bucket, 1515 hrs
- New Holland LS 180 Skid Steer Loader w/grapple bucket
- John Deere 310G Loader/Backhoe 2WD, OROPS
- Case 680G Loader/Backhoe w/Indeco M-400 hammer, s/n 9135888

MOVING & STORAGE TRUCK LIQUIDATION SELLING ABSOLUTE

- 1998 Allmand TLB25 Mini Tractor Loader/Backhoe, 28hp Kohler, 922 hrs
- 1995 Bradco 811 Backhoe
- 2001 International 4700, Box Truck, 21' box w/ Liftgate, DT466
- "NICE" 1998 Freightliner FL-70, Cummins 210 hp, 6-speed, sleeper cab, Alvan 28' Box w/5' overhead, side door both sides, odo 84,724
- 1996 International Single Axle, Day Cab Tractor, L-10 Cummins, 10sp., Air Ride
- 1996 Freightliner FL-70 FL 60, 6sp., 28' w/5' Overhang, Cummins 210HP, Side Doors, odo 24,7000
- 1998 Freightliner FL-60, Automatic, 24' Midwest Box, Cummins ISB-190-2600, 190HP, Anthony Lift Gate

HAUL TRACTORS, FLATBEDS & VAN TRAILERS

- 2000 Freightliner, single axle, day cab, 12 liter Detroit Engine, 587,770 miles
- 1996 Kenworth T-8000, Day Cab Tractor, Tandem Axle, 470 Detroit, 10sp.
- 1995 Freightliner Road Tractor w/Condo Sleeper Cab, Eaton Fuller, odo 1,231,500, VIN 1FUJYDCB1TH714587
- 1995 Ford Aeromax, Tandem Axle Tractor, C-10 Caterpillar, 10sp.,
- 1993 Volvo, Tandem Axle, Day Cab Tractor, N-14 Cummins, 10sp., Air Ride
- 1993 International 4900 Flatbed w/DT 466 engine, odo 215,000 VIN 1HTSDPPN8PH530870
- 2004 Great Dane Dry Van Trailer, 53', VIN 70545
- 1997 Trailmobile Dry Van Trailer, 53'
- 1996 Trailmobile Dry Van Trailer, 53'
- (3) 1994 Wabash Dry Van Trailers, 53'
- (2) 1993 Wabash Dry Van Trailers, 53'
- (8) 1991 Lufkin Dry Van Trailers, 48'
- (2) 1989 Fruehauf Dry Van Trailers, 48'

TRI-AXLE, SINGLE AXLE & FLATBED DUMP TRUCKS

- (2) 1999 Sterling Tri-axle Dump, Cum-

- mins M11, 8LL Transmissions, heavy beds
- 1995 International Single Axle Dump Truck, MDL 4700, DT 466, Tarp System, Spicers
- 1996 Ford L-9000, Tri-axle Dump, M-11 Cummins, 8sp.LL
- 1978 Ford L9000 Tri-Axle Dump
- 1995 International 4700 Flatbed w/DT 466 engine, odo 165,595 VIN 1HTSMABM2SH664617
- 1994 Topkick LoPro, 2-ton, w/ Cat3116, odo 314489
- 2002 International Flatbed Dump, w/DT466 odo 149579
- 2000 GMC C6500, Flatbed Dump, w/427ci, odo 217231
- 1997 GMC C7500, Flatbed Dump w/427 ci, odo 281154

EXTRA NICE LATE MODEL & EXPERIENCED SPECIALTY TRUCKS

- 2006 Ford F-550 Superduty Super Cab Utility Truck, Powerstroke Diesel, 4X4, odo 37678
- 2005 Ford F-550 Superduty XL Flatbed Truck, Powerstroke Diesel, 4wd, Auto, Air, CD, VIN 1FDAX5P76EA78167
- 2003 Ford F-350 Pickup w/Hi-Rail Package
- 2001 Ford F-250 Pickup, auto, air
- 2000 Chevy 3500, 14' Cutaway Box Van, 5.7L gas, odo167410
- 1996 Ford F-450 Superduty Wrecker, Powerstroke, Auto, Century Bed w/ Wheel Lift
- 1995 Ford F-350 Flatbed Truck "not running"
- 1990 Ford Bucket Truck, Telsta Bucket, "parts truck"

ALL TERRAIN LOADLIFTERS, INDUSTRIAL FORKLIFTS & SCISSORLIFTS

- 2002 Loadlifter, 12000lb, 20' Lift, 4WD, Diesel, Foam Filled Tires, Hydraulic Fork Positioner, 1520hrs
- 2006 Toyota 7FGU32, 6500lb, 2-Stage 140" Lift, Sideshift, LP Gas, Solid Pneumatic Tires,
- 1988 John Deere 482C, 2WD, New

- Pneumatic Rough Terrain Tires, 3-Stage 21' Lift, 5000LB, Diesel
- Yale 6000LB, 121" Lift, Dual Pneumatic Tires, LP Gas, (New Motor & LP System)
- (2) Crown 3000LB, Electric, Solid Tire, 118" Lift, w/Charger
- Clark 3000LB, Electric, Pneumatic Tired, 3 Stage Mast, w/Charger
- Toyota 4000LB, 1430" Lift, Cushion Tired, LP Gas
- Yale 50T, Solid Tire, 5000LB, 189" Lift, LP Gas
- Caterpillar GP30, 5800LB, 189: Lift, LP Gas
- Caterpillar GP 25, Solid Tire, 5000LB, LP Gas
- Clark GCX25, 4150LB, 188" Lift, Solid Tire, LP Gas, 5' Forks
- Yale 3000LB, 190" Lift, LP Gas, Side Shift, Solid Non-Marking Tires
- 2005 Palfinger Piggyback Lift, VIN 100020429
- 1999 Teledyne Princeton, Piggyback Lift, 5000lb, Sideshift, 110" Lift, 1834hrs.
- (2) JLG 1932-ES Electric Scissor Lifts, No Mark Tires
- (2) JLG 2646-E2 Electric Scissor Lifts, No Mark Tires

EQUIPMENT TRAILERS, FLATBED, MOBILE OFFICES, REEL TRAILER & MORE

- New 2010 Cherokee 50,000 lb Step Deck Trailer, 53' x 102", air ride, 8' hydraulic ramps, 11' upper deck, (2) Aluminum tool boxes
- New 2010 Cherokee 20,000 lb Flatbed Equipment Trailer, 20' flat, 5' dove, pintle eye, electric brakes all wheels, spring loaded ramps
- New 2010 Cherokee 16' Equipment Trailer, 7 ton capacity, 82"w, electric brakes all wheels, spring assist ramps
- 1993 Transcraft 45' Spread Axle Flatbed Trailer
- Mobile 12' x 60' Office Unit w/15' ofc, 11' ofc, 30' conf, HVAC, handicap bathroom
- Mobile 8' x 30' Office/Storage Combo

- Unit w/window a/c, base heat, 20' storage
- (8) Dry Van Storage Trailers (4) 45' (4) 48'
- 1989 Reel Trailer
- (2) Steel Flatbed Bodies 14' & 16'
- Flatbed Dump Body, 22'

SKID STEER ATTACHMENTS & SUPPORT EQUIPMENT

- Cat BA 18 Broom Attachment, 72" s/nAZN00632
- Jacobsen Mdl SHT-20 Broom Attachment
- (4) 2009 Versatech Pallet Fork attachments for skid steer
- (2) 2009 Versatech Fork Frames
- 2009 Versatech Brush Grapple
- 2009 Versatech Root Grapple w/3-tines
- 2009 Versatech Grapple Bucket
- 2009 Versatech Backhoe Attachment
- (2) 2009 Versatech Hay Spear Attachment
- 2009 Universal Mounting Plate for Quick Attach
- (5) sets 42" Class 2 Forklift Forks
- (4) Michelin Tractor tires & wheels 11R x 225
- (4) Cat 938F Solid Tires & Wheels
- 300 gallon diesel tank w/110volt pump
- 90 gallon diesel tank w/pump for pickup truck

FARM TRACTORS, BALERS, MOWERS & IMPLEMENTS

- New Holland TL-80 Farm Tractor, C/H/A, 2wd, 7310 Front Loader, dual remotes, 2186 hrs. s/n 001182395
- 1994 Allied/Zetor Tractor, 50HP
- Hesston 845 Round Baler, s/n HL44209
- Lely 1203 Disc Mower, 72" s/n 10040972
- Bush Hog 5' Rotary Cutter
- Assorted chisel plows, tedders, hay rakes, bale spears and more



2005 Cat 267B Loader



2002 Komatsu PC138 Excavator



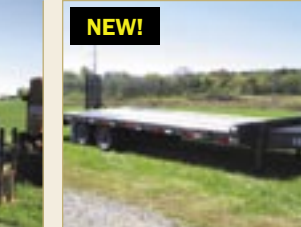
2001 Int'l. 4700 Box Truck



2007



Items in our Great Smoky Auction brochures typically represent only 25% of equipment to be auctioned on sale day.



NEW!

2006

NEW!