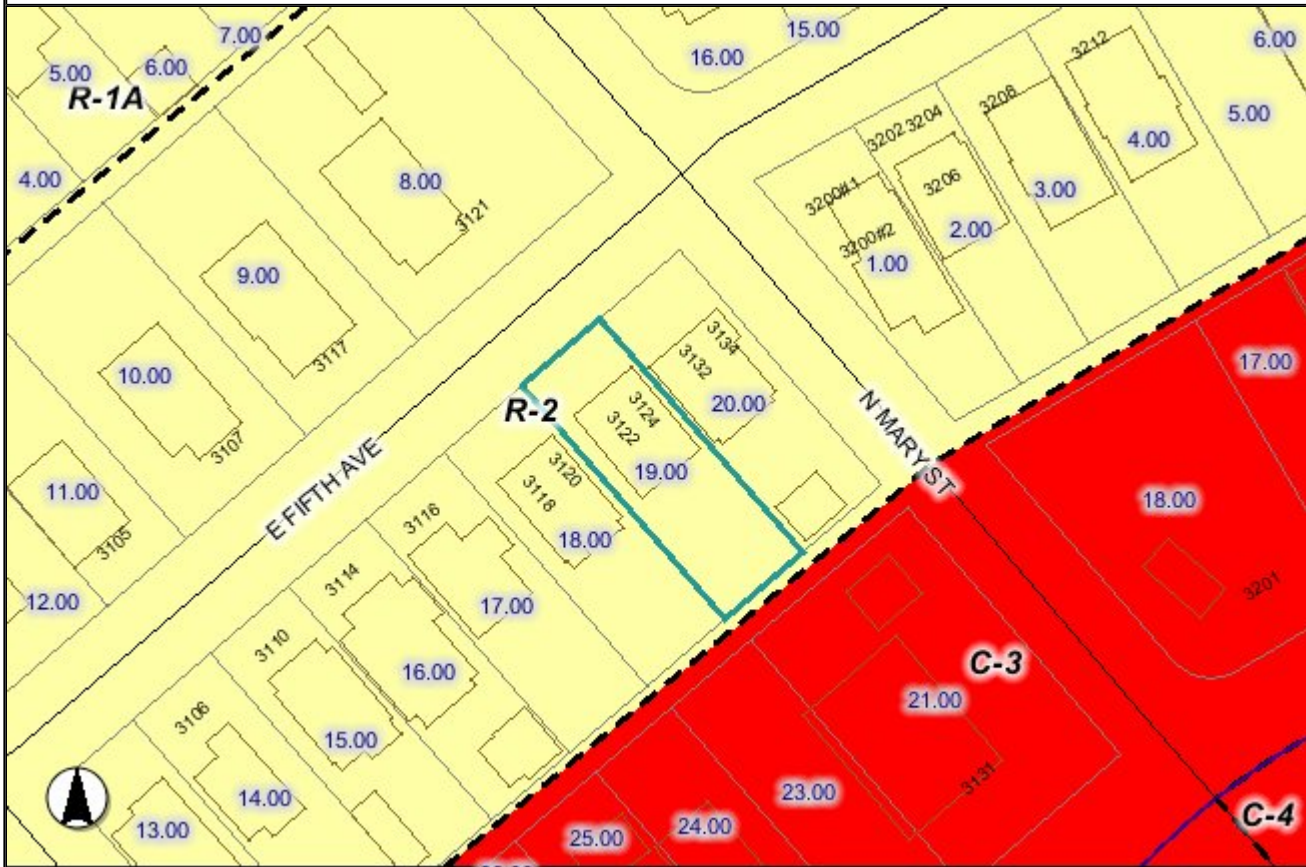


KGIS - Knoxville, Knox County, K.U.B. Geographic Information System



© KGIS 2010

0 91ft

Legend

- | | | |
|-------------------|--|-------------------------|
| Selected Features | Neighborhood Conservation | Water Bodies |
| Local Roads | Technology | Subdivisions |
| Collectors | Knox County Zoning | Knoxville City Boundary |
| Arterials | Agricultural and Estate | Farragut Boundary |
| PAPER | Business and Technology Park | Knox County Boundary |
| CLOSED | Neighborhood Commercial | |
| Other | Central Business District | |
| Expressways | Commercial | |
| Interstate Shield | PLANNED COMMERCIAL | |
| Interstates | Floodway | |
| Railroads | HISTORIC OVERLAY | |
| Buildings | Industrial | |
| Parcels | Light Industrial | |
| MPC Flood Fringe | Office | |
| Zoning Boundary | Open Space | |
| Zoning Overlay | Planned Residential | |
| Downtown Design | Low Density Residential | |
| Flood Zone | Multifamily Residential | |
| Infill House | No Zone or Transition | |
| Historic (cont) | FORM DISTRICT | |
| | TRADITIONAL NEIGHBORHOOD DEVELOPMENT AND TOWN CENTER | |

Disclaimer. KGIS makes no representation or warranty as to the accuracy of this map and its information nor to its fitness for use. Any user of this map product accepts the same AS IS, WITH ALL FAULTS, and assumes all responsibility for the use thereof, and further covenants and agrees to hold KGIS

harmless from and any damage, loss, or liability arising from any use of the map product. Independent verification of all information contained on this map should be obtained by any user.

Proprietary Information. The map products and databases on this Web Site have been copyrighted by the KGIS Policy Board. The KGIS Policy Board hereby reserves all rights thereto, and no portion of the products or databases on this Web Site may be reproduced in any form or by any means without the express written authorization of the KGIS Policy Board or its authorized agents.

NOTE: These maps show zoning boundaries adopted by the Knox County Board of Commissioners on April 17, 1979 and the Knoxville City Council on August 19, 1980, and subsequently amended. Official maps are available for inspection in the Metropolitan Planning Commission offices. The zoning maps are amended frequently through action of the City Council and County Commission. Therefore, recent zoning changes that have been approved by the City Council or County Commission may not be reflected here. Verify all zoning with the Knoxville-Knox County Metropolitan Planning Commission staff at (865) 215-2500.